

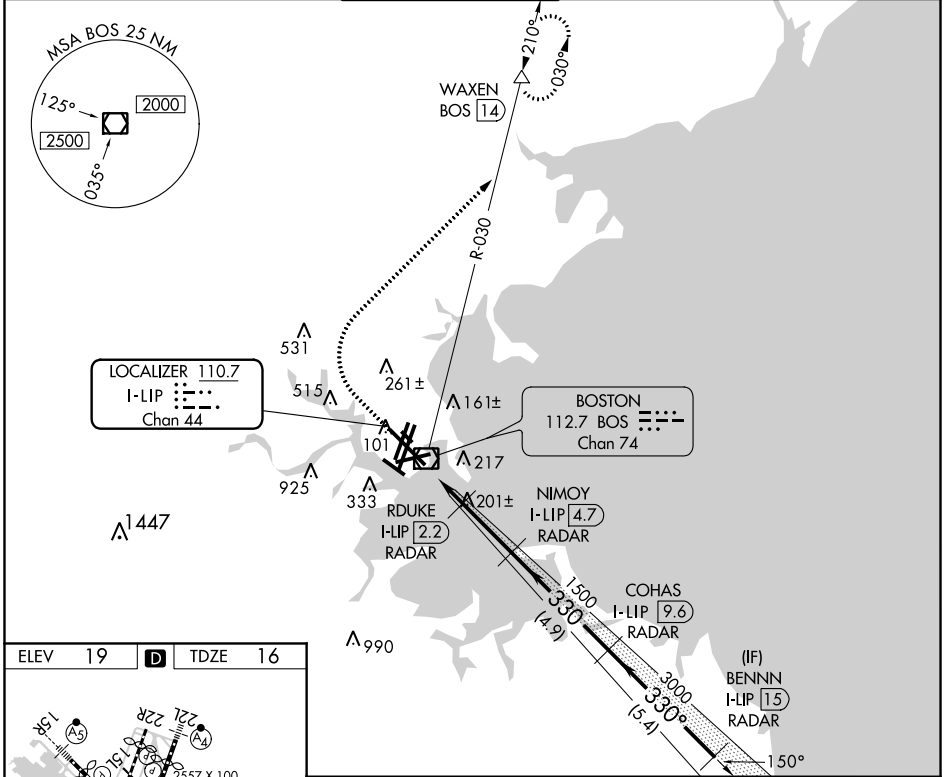
LOC/DME I-LIP	APP CRS	Rwy Idg	10083
110.7	330°	TDZE	16
Chan 44		Apt Elev	19

ILS or LOC RWY 33L

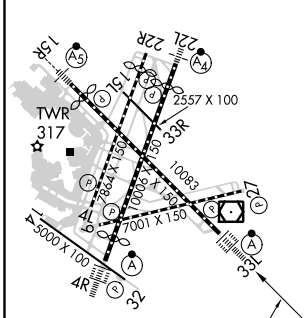
GENERAL EDWARD LAWRENCE LOGAN INTL (BOS)

RADAR required for procedure entry, DME.		ALSF-2	MISSED APPROACH: Climb to 1500 then climbing right turn to 3000 on BOS VOR/DME R-030 to WAXEN/BOS 14 DME and hold.	
Circling NA for Cats C and D west of Rwys 4L and 15R. Circling NA to Rwy 14.				

D-ATIS	BOSTON APP CON	BOSTON TOWER	GND CON	CLNC DEL	CPDLC
135.0	120.6 263.1	128.8 257.8 (WEST) 132.225 257.8 (EAST)	121.9 121.75	121.65 257.8	



ELEV 19	D	TDZE 16
---------	----------	---------



TDZ/CL Rwys 4R, 15R and 33L
 REIL Rwys 4L, 27 and 32
 MIRL Rwy 15L-33R 330° 4.5 NM
 HIRL Rwys 4L-22R, 4R-22L, from FAF 9-27, 14-32 and 15R-33L
 FAF to MAP 4.5 NM

Knots	60	90	120	150	180
Min:Sec	4:30	3:00	2:15	1:48	1:30

1500	3000	WAXEN	VGSi and ILS glidepath not coincident (VGSi Angle 3.00/TCH 68).		BENNN	
		BOS R-030		NIMOY I-LIP 4.7	COHAS I-LIP 9.6	
				RDUKE I-LIP 2.2	4000	
				1500	3000	
				700	1500	
				1.2 NM	0.8 NM	
				2.5 NM	4.9 NM	
				5.4 NM		
CATEGORY	A		B		C	D
S-ILS 33L	216/18		200 (200-1/2)			
S-LOC 33L	460/24		444 (500-1/2)		460/45	444 (500-3/8)
CIRCLING	940-1 1/4 921 (1000-1 1/4)		1040-1 1/2 1021 (1100-1 1/2)		1040-3	1021 (1100-3)

NE-1, 15 JUL 2021 to 12 AUG 2021

NE-1, 15 JUL 2021 to 12 AUG 2021