

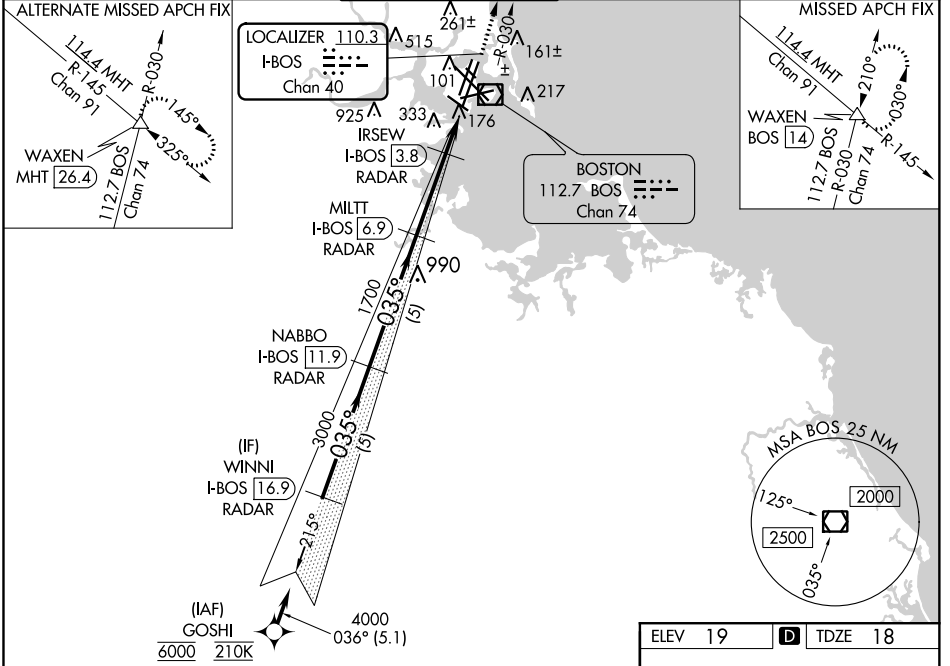
LOC/DME I-BOS 110.3 Chan 40	APP CRS 035°	Rwy Idg TDZE Apt Elev	8851 18 19
--	------------------------	-----------------------------	---------------------------------------

ILS or LOC RWY 4R

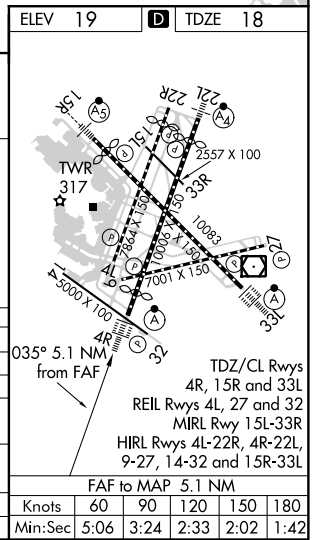
GENERAL EDWARD LAWRENCE LOGAN INTL (BOS)

RNAV 1-GPS or RADAR required for procedure entry. DME or RADAR required.		ALSIF-2 	MISSED APPROACH: Climb to 3000 on BOS VOR/DME R-030 to WAXEN INT/BOS 14 DME and hold.
 # For inop ALS, increase S-LOC 4R Cat A/B visibility to RVR 5500; Rwy 4R helicopter visibility reduction below 4000 RVR NA. **When vessels taller than 144 feet present, S-ILS 4R NA.			

D-ATIS 135.0	BOSTON APP CON 120.6 263.1	BOSTON TOWER 128.8 257.8 (WEST) 132.225 257.8 (EAST)	GND CON 121.9 121.75	CLNC DEL 121.65 257.8	CPDLC
------------------------	--------------------------------------	---	--------------------------------	---------------------------------	-------



GOSHI	VGS1 and ILS glidepath not coincident (VGS1 Angle 3.00/TCH 67).			3000	WAXEN
	WINNI I-BOS 16.9 RADAR	NABBO I-BOS 11.9 RADAR	MILTT I-BOS 6.9 RADAR	IRSEW I-BOS 3.8 RADAR	BOS R-030
6000	036°	035°	3000	1700	* LOC only.
4000					
3000					
1700					
GS 3.00° TCH 51					
	5.1 NM	5 NM	5 NM	3.1 NM	0.9 NM
					1.1 NM
CATEGORY	A	B	C	D	
S-ILS 4R		218/18	200 (200-½)		
S-LOC 4R	440/24	422 (500-½)	440/40	422 (500-¾)	
CIRCLING	940-1¼	1040-1½	620-1¾	620-2	
	921 (1000-1¼)	1021 (1100-1½)	601 (700-1¾)	601 (700-2)	
** APPROACH MINIMA WHEN CONTROL TOWER REPORTS TALL VESSELS IN APPROACH AREA					
S-ILS 4R		374/40	356 (400-¾)		
S-LOC 4R #		440/40	422 (500-¾)		



NE-1, 15 JUL 2021 to 12 AUG 2021

NE-1, 15 JUL 2021 to 12 AUG 2021

ILS or LOC RWY 4R