

PATSS FIVE DEPARTURE (RNAV)

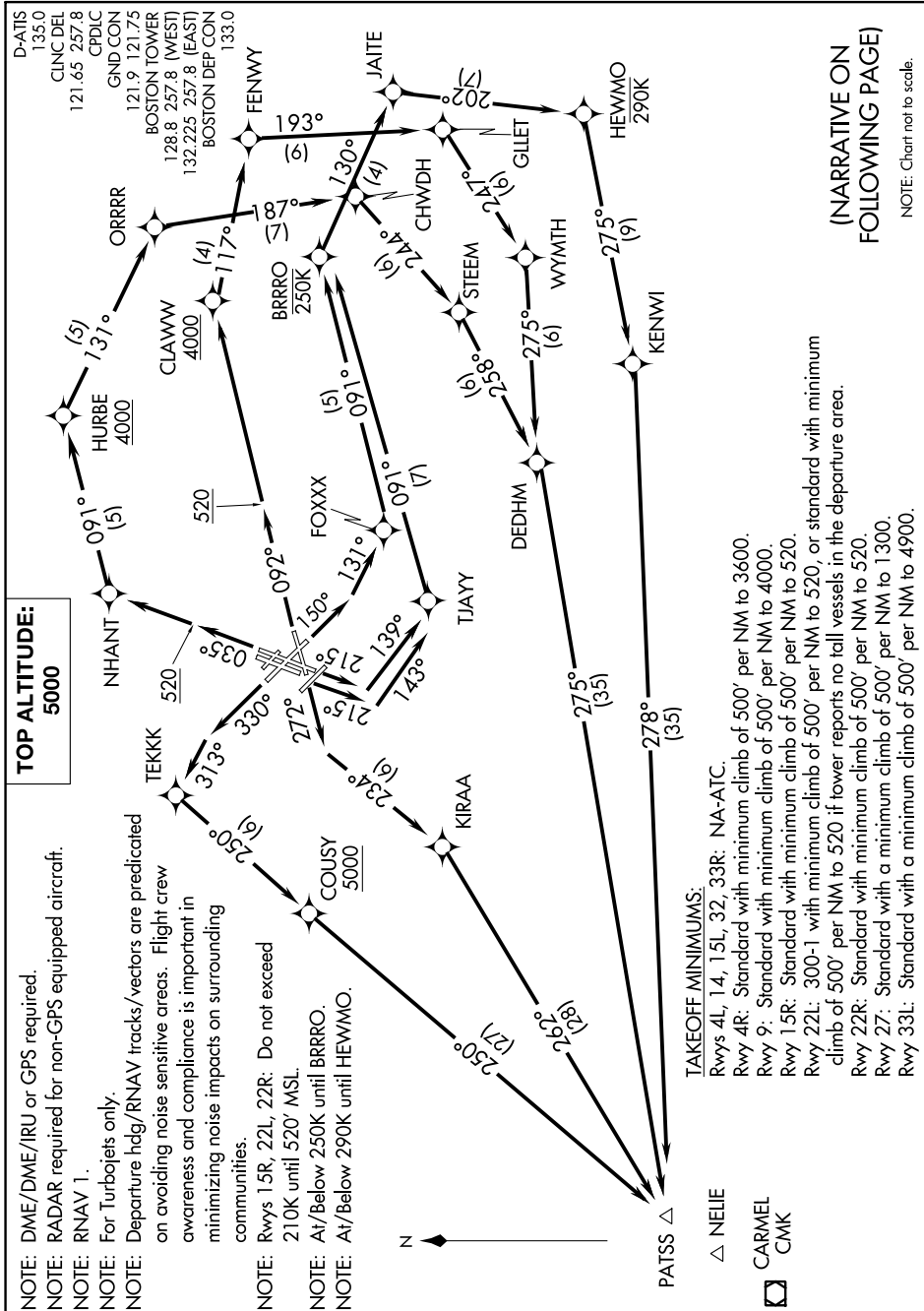
AL-58 (FAA)

BOSTON, MASSACHUSETTS

NE-1, 15 JUL 2021 to 12 AUG 2021

TOP ALTITUDE:
5000

NOTE: DME/DME/IRU or GPS required.
 NOTE: RADAR required for non-GPS equipped aircraft.
 NOTE: RNAV 1.
 NOTE: For Turboprops only.
 NOTE: Departure hdg/RNAV tracks/vectors are predicated on avoiding noise sensitive areas. Flight crew awareness and compliance is important in minimizing noise impacts on surrounding communities.
 NOTE: Rwy 15R, 22L, 22R: Do not exceed 210K until 520' MSL.
 NOTE: A1/Below 250K until BRRRO.
 NOTE: A1/Below 290K until HEWMO.



TAKEOFF MINIMUMS:
 Rwy 4L, 14, 15L, 32, 33R: NA-ATC.
 Rwy 4R: Standard with minimum climb of 500' per NM to 3600.
 Rwy 9: Standard with minimum climb of 500' per NM to 4000.
 Rwy 15R: Standard with minimum climb of 500' per NM to 520.
 Rwy 22L: 300-1 with minimum climb of 500' per NM to 520, or standard with minimum climb of 500' per NM to 520 if tower reports no tall vessels in the departure area.
 Rwy 22R: Standard with minimum climb of 500' per NM to 520.
 Rwy 27: Standard with a minimum climb of 500' per NM to 1300.
 Rwy 33L: Standard with a minimum climb of 500' per NM to 4900.

△ NELIE
 CARMEL
 CMK

(NARRATIVE ON FOLLOWING PAGE)

NOTE: Chart not to scale.

NE-1, 15 JUL 2021 to 12 AUG 2021