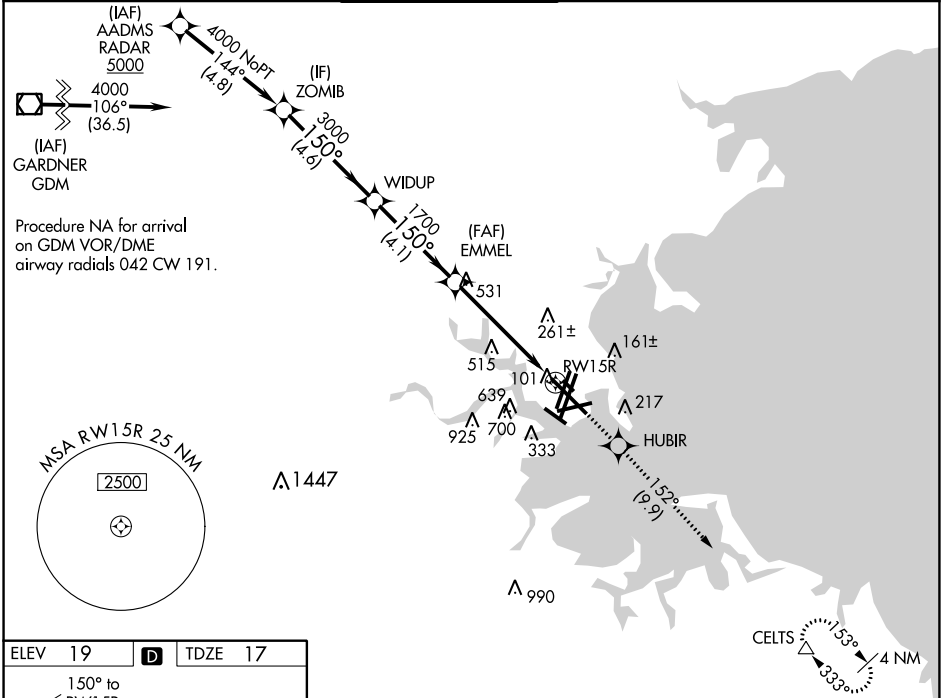


WAAS CH 42925 W15A	APP CRS 150°	Rwy ldg TDZE Apt Elev	9201 17 19
--	------------------------	-----------------------------	---------------------------------------

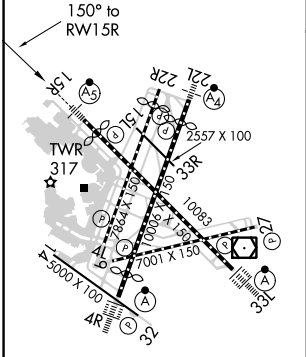
RNAV (GPS) RWY 15R

GENERAL EDWARD LAWRENCE LOGAN INTL (BOS)

RNP APCH.		MALSR		MISSED APPROACH: Climb to 3000 direct HUBIR and on track 152° to CELTS and hold.		
<p>▼ For uncompensated Baro-VNAV systems, LNAV/VNAV NA below -15°C or above 54°C. Circling NA to Rwy 14. Circling NA for Cats C and D west of Rwys 4L and 15R. For inop ALS, increase LNAV Cats C and D visibility to 1 3/8 SM.</p>						
D-ATIS 135.0	BOSTON APP CON 120.6 263.1	BOSTON TOWER 128.8 257.8 (WEST) 132.225 257.8 (EAST)		GND CON 121.9 121.75	CLNC DEL 121.65 257.8	CPDLC



ELEV 19	D	TDZE 17
---------	----------	---------



TDZ/CL Rwys 4R, 15R and 33L
 REIL Rwys 4L, 27 and 32
 MIRL Rwy 15L-33R
 HIRL Rwys 4L-22R, 4R-22L, 9-27, 14-32 and 15R-33L

VGSi and RNAV glidepath not coincident (VGSi Angle 3.00/TCH 71).				3000	HUBIR	CELTS
				↑	✦	tr 152°
				*LNAV only.		
ZOMIB				4000	WIDUP	EMMEL
				150°	1700	*1.7 NM to RWY 15R
GP 3.00°				3000		
TCH 60						
				4.6 NM	4.1 NM	3.4 NM
					1.7 NM	
CATEGORY	A	B	C	D		
LPV DA	217/18			200 (200-1/2)		
LNAV/VNAV DA	567-1 3/8			550 (600-1 3/8)		
LNAV MDA	620/24	603 (700-1/2)	620-1 3/8	603 (700-1 3/8)		
CIRCLING	940-1 1/4	1040-1 1/2	620-1 3/4	620-2		
	921 (1000-1 1/4)	1021 (1100-1 1/2)	601 (700-1 3/4)	601 (700-2)		

NE-1, 15 JUL 2021 to 12 AUG 2021

NE-1, 15 JUL 2021 to 12 AUG 2021