

WAAS CH <b>45925</b> <b>W22A</b>	APP CRS <b>215°</b>	Rwy Idg <b>8806</b> TDZE <b>16</b> Apt Elev <b>19</b>
--	------------------------	---

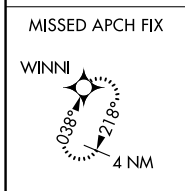
# RNAV (GPS) RWY 22L

GENERAL EDWARD LAWRENCE LOGAN INTL (BOS)

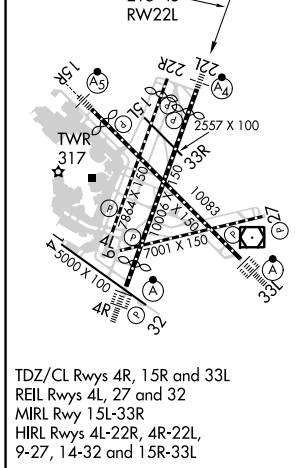
<p><b>⚠</b> DME/DME RNP-0.3 NA. Circling NA to Rwy 14. Circling NA for Cats C and D west of Rws 4L and 15R. For inoperative ALS, increase LNAV/VNAV Cat D visibility to RVR 6000 and LNAV Cat D visibility to 1½ SM. For uncompensated Baro-VNAV systems, LNAV/VNAV NA below -13°C (9°F) or above 43°C (109°F).</p>	<p>MALSF</p>	<p>MISSED APPROACH: Climb to 3000 direct WINNI and hold.</p>

D-ATIS <b>135.0</b>	BOSTON APP CON <b>120.6 263.1</b>	BOSTON TOWER <b>128.8 257.8 (WEST)</b> <b>132.225 257.8 (EAST)</b>	GND CON <b>121.9 121.75</b>	CLNC DEL <b>121.65 257.8</b>	CPDLC
------------------------	--------------------------------------	--	--------------------------------	---------------------------------	-------

## RADAR REQUIRED



ELEV <b>19</b>	<b>D</b>	TDZE <b>16</b>
----------------	----------	----------------



<p>3000 WINNI</p> <p>VGSI and RNAV glidepath not coincident (VGSI Angle 3.00/TCH 71).</p>	<p>ZUMOL 2 NM to RW22L</p> <p>VOCUS 1700</p> <p>WYANE 3000</p> <p>NOLEY 4000</p>			
	<p>*LNAV only.</p> <p>RW22L</p> <p>*1.4 NM to RW22L</p> <p>*700</p> <p>1700</p>	<p>GP 3.00° TCH 55</p>		
<p>1.4 NM</p> <p>0.6</p> <p>3.1 NM</p> <p>4.9 NM</p> <p>3.5 NM</p>				
CATEGORY	A	B	C	D
LPV DA		216/40	200 (200-¾)	
LNAV/VNAV DA		408/50	392 (400-1)	
LNAV MDA	540/40	524 (600-¾)	540-1¼	524 (600-1¼)
CIRCLING	940-1¼ 921 (1000-1¼)	1040-1½ 1021 (1100-1½)	620-1¾ 601 (700-1¾)	620-2 601 (700-2)

NE-1, 15 JUL 2021 to 12 AUG 2021

NE-1, 15 JUL 2021 to 12 AUG 2021