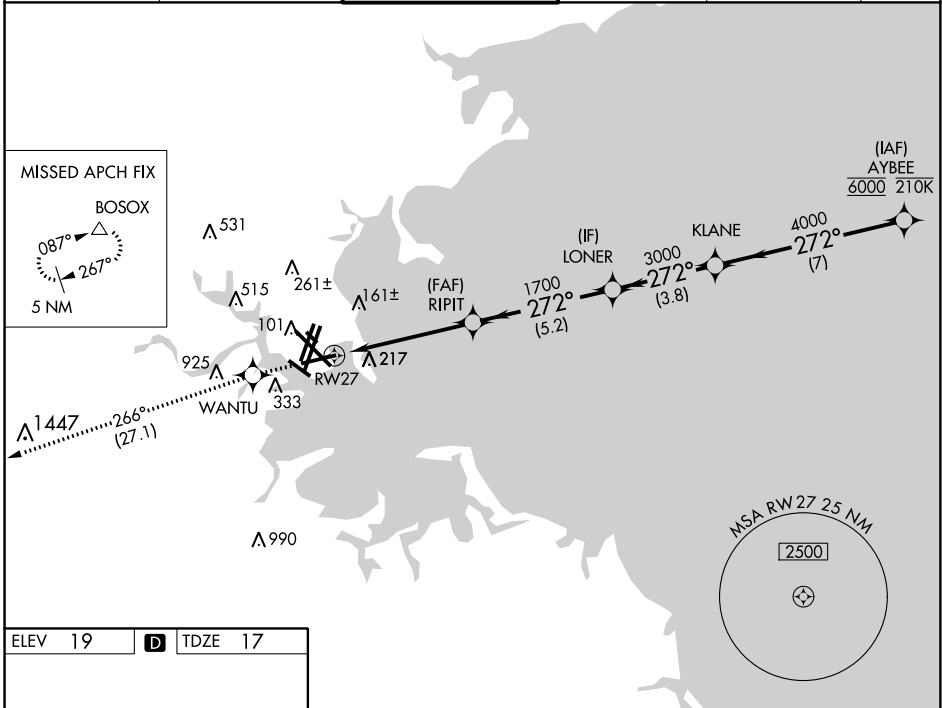


APP CRS	Rwy Idg	7001
272°	TDZE	17
	Apt Elev	19

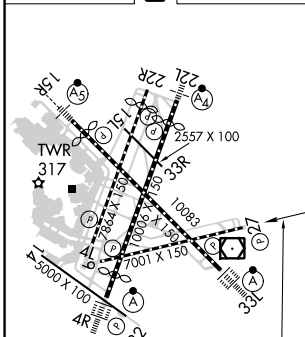
RNAV (GPS) RWY 27

GENERAL EDWARD LAWRENCE LOGAN INTL (BOS)

RNP APCH.		MISSED APPROACH: Climb to 3000 direct WANTU and on track 266° to BOSOX and hold.		
For uncompensated Baro-VNAV systems, LNAV/VNAV NA below -15°C or above 54°C. Circling NA to Rwy 14. Circling NA for Cats C and D west of Rwys 4L and 15R.				
D-ATIS	BOSTON APP CON	BOSTON TOWER	GND CON	CLNC DEL
135.0	120.6 263.1	128.8 257.8 (WEST) 132.225 257.8 (EAST)	121.9 121.75	121.65 257.8
				CPDLC



ELEV 19	D	TDZE 17
---------	----------	---------



TDZ/CL Rwys 4R, 15R and 33L
 REIL Rwys 4L, 27 and 32
 MIRL Rwy 15L-33R
 HIRL Rwys 4L-22R, 4R-22L, 9-27, 14-32 and 15R-33L

3000	WANTU	tr 266°	BOSOX	VGSI and RNAV glidepath not coincident (VGSI Angle 3.00/TCH 71).	AYBEE
	*LNAV only.		RIPIT	LONER	KLANE
			1700	3000	4000
			1700		6000
					GP 3.00° TCH 57
			1.7 NM	3.4 NM	5.2 NM
				3.8 NM	7 NM
CATEGORY	A		B		C
LNAV/VNAV DA	510-1 3/8		493 (500-1 3/8)		
LNAV MDA	640-1 1/2 623 (700-1 1/2)		640-1 3/4 623 (700-1 3/4)		
C CIRCLING	940-1 1/4 921 (1000-1 1/4)		1040-1 1/2 1021 (1100-1 1/2)		620-1 3/4 601 (700-1 3/4) 620-2 601 (700-2)