

REVSS FOUR DEPARTURE (RNAV)

AL-58 (FAA)

BOSTON, MASSACHUSETTS

NE-1, 15 JUL 2021 to 12 AUG 2021

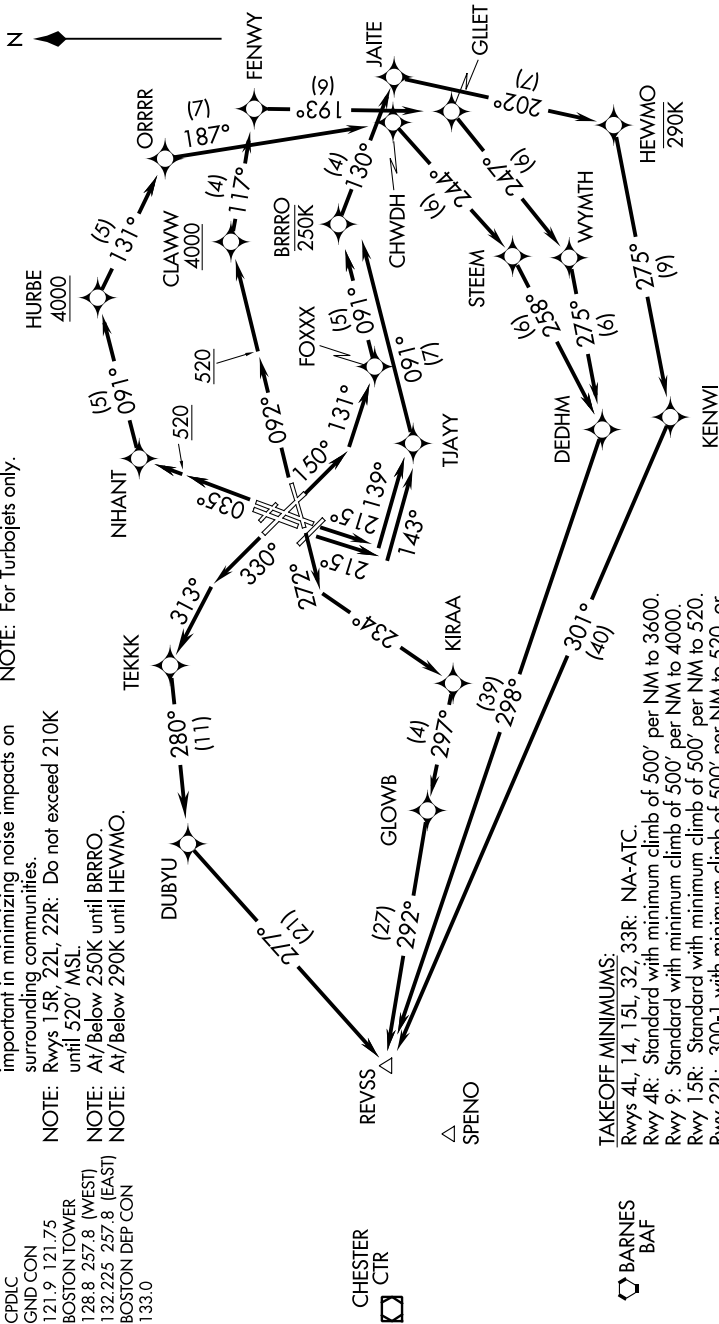
D-ATIS 135.0
CLNC DEL 121.65 257.8
CPDLC
GND CON 121.9 121.75

BOSTON TOWER 128.8 257.8 (WEST)
132.225 257.8 (EAST)
BOSTON DEP CON 133.0

NOTE: Departure hdg/RNAV tracks/vectors are predicated on avoiding noise sensitive areas.
NOTE: DME/DME/IRU or GPS required.
NOTE: RADAR required for non-GPS equipped aircraft.
NOTE: RNAV 1.
NOTE: Flight crew awareness and compliance is important in minimizing noise impacts on surrounding communities.
NOTE: For Turbojets only.
NOTE: Rwy 15R, 22L, 22R: Do not exceed 210K until 520' MSL.
NOTE: A1/Below 250K until BRRO.
NOTE: A1/Below 290K until HEWMO.

NOTE: DME/DME/IRU or GPS required.
NOTE: RADAR required for non-GPS equipped aircraft.
NOTE: RNAV 1.
NOTE: Flight crew awareness and compliance is important in minimizing noise impacts on surrounding communities.
NOTE: For Turbojets only.

TOP ALTITUDE:
5000



TAKEOFF MINIMUMS:
 Rwy 4L, 14, 15L, 32, 33R: NA-ATC.
 Rwy 4R: Standard with minimum climb of 500' per NM to 3600.
 Rwy 9: Standard with minimum climb of 500' per NM to 4000.
 Rwy 15R: Standard with minimum climb of 500' per NM to 520.
 Rwy 22L: 300-1 with minimum climb of 500' per NM to 520, or standard with minimum climb of 500' per NM to 520 if tower reports no tall vessels in the departure area.
 Rwy 22R: Standard with minimum climb of 500' per NM to 520.
 Rwy 27: Standard with a minimum climb of 500' per NM to 1300.
 Rwy 33L: Standard with a minimum climb of 500' per NM to 520.

(NARRATIVE ON FOLLOWING PAGE)

NOTE: Chart not to scale.

NE-1, 15 JUL 2021 to 12 AUG 2021

REVSS FOUR DEPARTURE (RNAV)