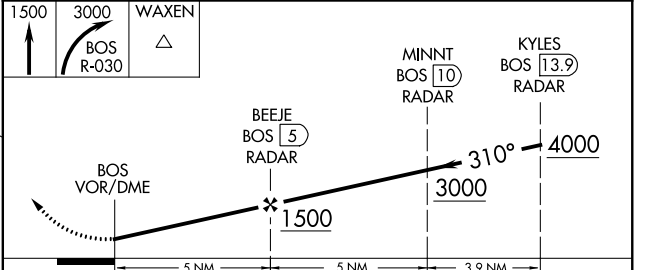
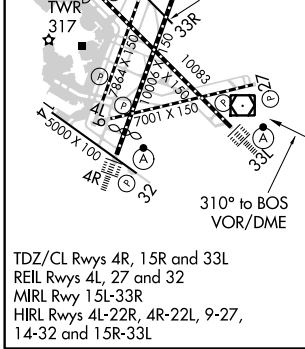
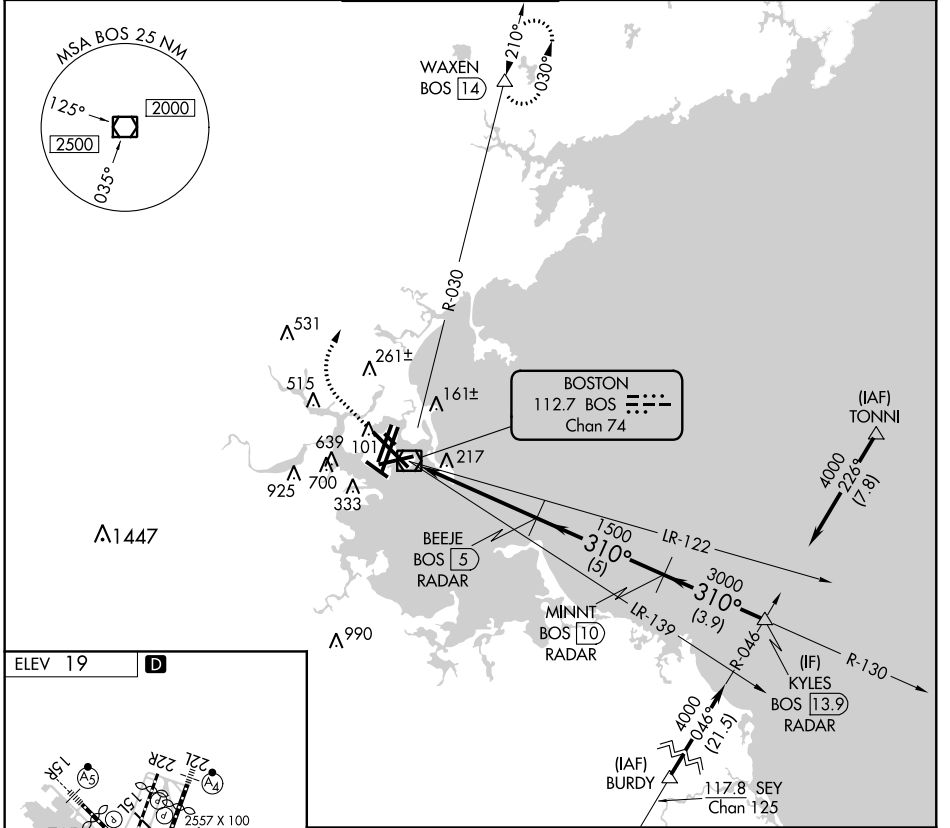


VOR/DME BOS <b>112.7</b> Chan <b>74</b>	APP CRS <b>310°</b>	Rwy ldg TDZE N/A N/A	Apt Elev <b>19</b>
---	------------------------	----------------------------	-----------------------

# VOR-A

## GENERAL EDWARD LAWRENCE LOGAN INTL (BOS)

DME required.		BOSTON TOWER <b>128.8 257.8 (WEST)</b> <b>132.225 257.8 (EAST)</b>		GND CON <b>121.9 121.75</b>	CLNC DEL <b>121.65 257.8</b>	CPDLC
D-ATIS <b>135.0</b>	BOSTON APP CON <b>120.6 263.1</b>					



CATEGORY	A	B	C	D
<b>CIRCLING</b>	940-1¼ 921 (1000-1¼)	1040-1½ 1021 (1100-1½)	620-1¾ 601 (700-1¾)	620-2 601 (700-2)

NE-1, 15 JUL 2021 to 12 AUG 2021

NE-1, 15 JUL 2021 to 12 AUG 2021