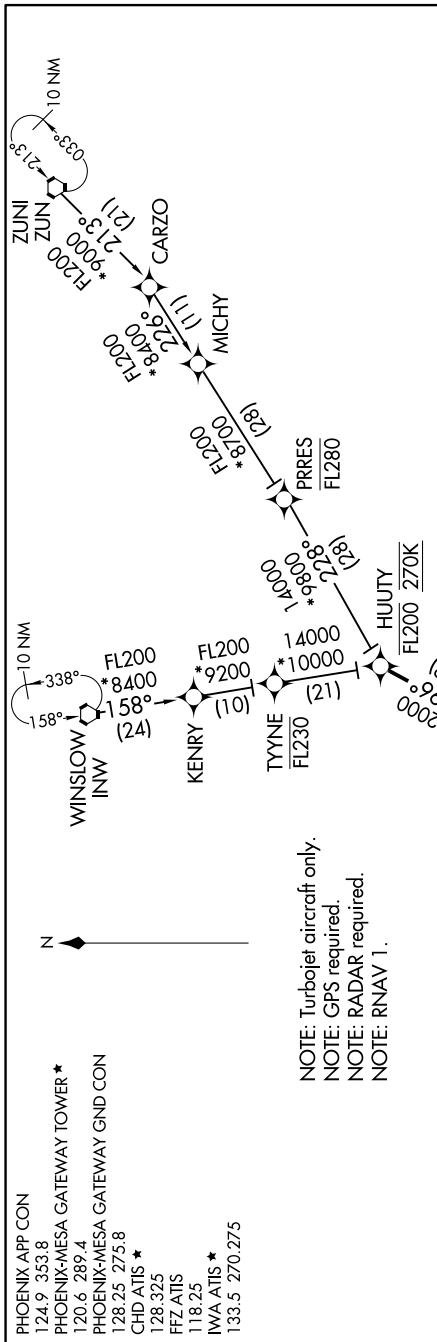


SW-4, 15 JUL 2021 to 12 AUG 2021



NOTE: Turbojet aircraft only.
NOTE: GPS required.
NOTE: RADAR required.
NOTE: RNAV 1.

ARRIVAL ROUTE DESCRIPTION

WINSLOW TRANSITION (INW.HUUTY1)
ZUNI TRANSITION (ZUN.HUUTY1)

From HUUTY on track 196° to CHEKR. Cross CHEKR between 12000 and 14000 and at 270 KTS. From CHEKR via 219° track to ROSEE, cross ROSEE between 10000 and 11000 and at 250 KTS, from ROSEE via 221° track to CNYON, cross CNYON at 9000, from CNYON via 222° track to BAYTA, cross BAYTA at 8000, from BAYTA via 200° track to AEJAY, cross AEJAY at 7000 and at 210 KTS, from AEJAY via 167° track to TYLIK, cross TYLIK at 5500, then on 167° heading. Expect RADAR vectors to final approach course.

LOST COMMUNICATIONS:

After AEJAY on track 215° direct IWA VORTAC.
Hold NE, LT, 215° inbound, maintain 7000.

NOTE: Chart not to scale.

SW-4, 15 JUL 2021 to 12 AUG 2021