

LOC/DME I-LPI	APP CRS	Rwy Idg	<b>13501</b>
<b>109.1</b>	<b>172°</b>	TDZE	<b>6187</b>
Chan <b>28</b>		Apt Elev	<b>6187</b>

# ILS RWY 17L (SA CAT I & II)

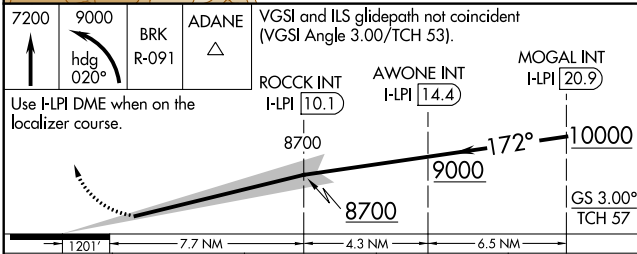
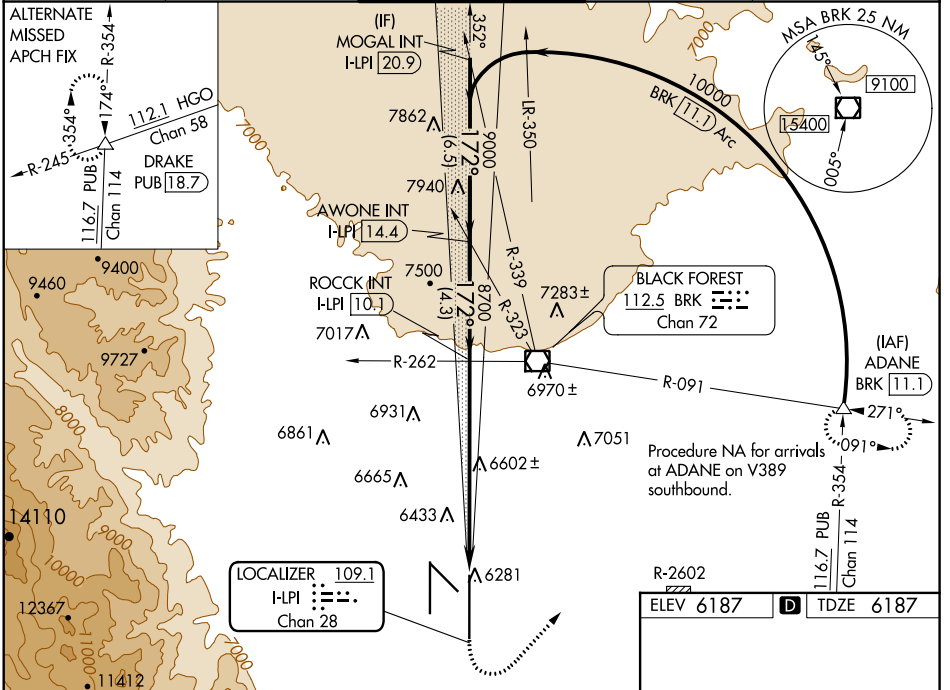
CITY OF COLORADO SPRINGS MUNI (COS)

DME or RADAR required for procedure entry.

**⚠** Simultaneous approach authorized with Rwy 17R.  
**⚠** SA CAT I: Required specific OPSPEC, MSPEC, or LOA approval and use of HUD to DH. SA CAT II: Reduced Lighting: Requires specific OPSPEC, MSPEC, or LOA approval and use of autoland or HUD to touchdown.

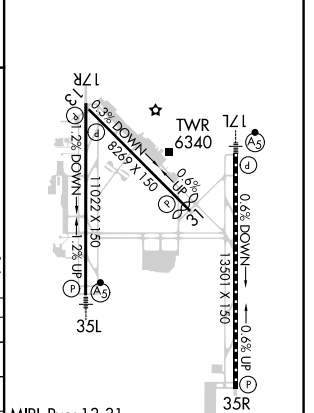
**MALS** MISSED APPROACH: Climb to 7200 then climbing left turn to 9000 on heading 020° and on BRK VOR/DME R-091 to ADANE INT/BRK VOR/DME 11.1 DME and hold.

ATIS <b>125.0 254.3</b>	SPRINGS APP CON <b>124.0 257.875</b>	SPRINGS TOWER <b>119.9 360.6</b>	GND CON <b>121.7 348.6</b>	CLNC DEL <b>134.45 363.125</b>
----------------------------	---	-------------------------------------	-------------------------------	-----------------------------------



CATEGORY	A	B	C	D
S-ILS 17L	SA CAT I	RA 169/14	150 DA 6337	
S-ILS 17L	SA CAT II	RA 105/16	100 DA 6287	

R-2602 ELEV 6187	<b>D</b> TDZE 6187
---------------------	--------------------



## SA CATEGORY I & II ILS SPECIAL AIRCREW & AIRCRAFT CERTIFICATION REQUIRED

MIRL Rwy 13-31  
 HIRL Rwys 17R-35L and 17L-35R  
 REIL Rwys 13, 17R, 31 and 35R  
 TDZ/CL Rwys 17L and 35R

SW-1, 15 JUL 2021 to 12 AUG 2021

SW-1, 15 JUL 2021 to 12 AUG 2021