

LOC I-COS 109.9	APP CRS 352°	Rwy Idg TDZE Apt Elev	11022 6075 6187
---------------------------	------------------------	-----------------------------	--

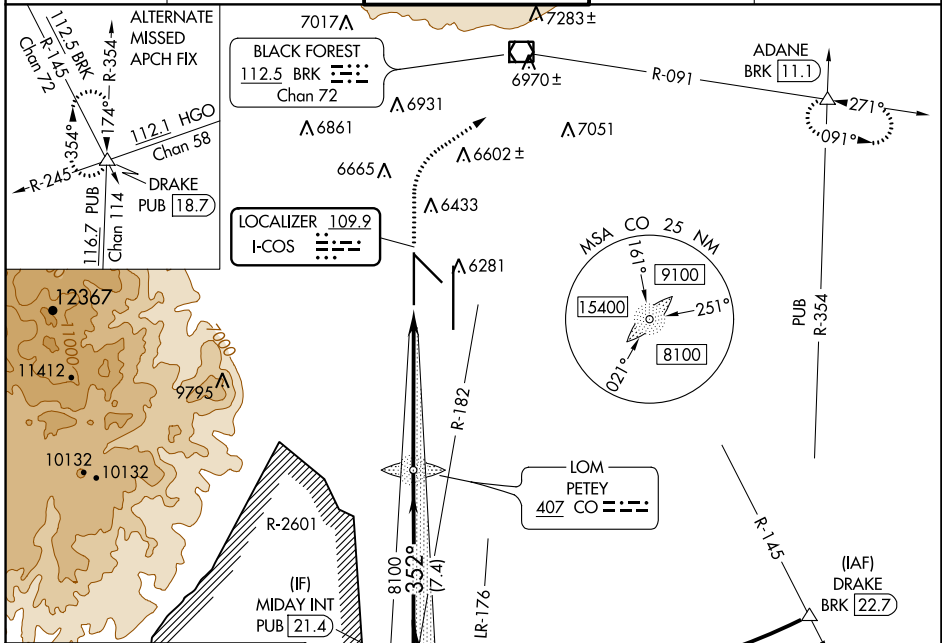
ILS or LOC RWY 35L

CITY OF COLORADO SPRINGS MUNI (COS)

⚠ RADAR monitoring required when R-2601 in use.
 * RVR 1800 authorized with the use of FD or AP or HUD to DA.

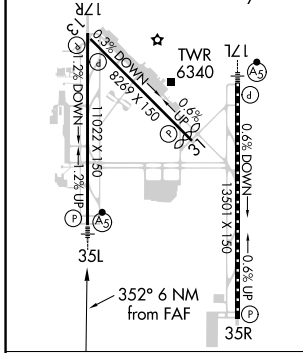
MALSR
 MISSED APPROACH: Climb to 6700 then climbing right turn to 9000 on heading 047° and on BRK VOR/DME R-091 to ADANE INT/BRK 11.1 DME and hold.

ATIS 125.0 254.3	SPRINGS APP CON 124.0 257.875	SPRINGS TOWER 119.9 360.6	GND CON 121.7 348.6	CLNC DEL 134.45 363.125
----------------------------	---	-------------------------------------	-------------------------------	-----------------------------------



ELEV 6187	D TDZE 6075
-----------	--------------------

HIRL Rwy 17R-35L and 17L-35R
 REIL Rwy 13, 17R, 31 and 35R
 TDZ/CL Rwy 17L and 35R
 MIRL Rwy 13-31



FAF to MAP 6 NM

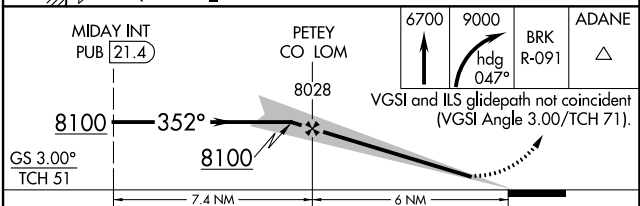
Knots	60	90	120	150	180
Min:Sec	6:00	4:00	3:00	2:24	2:00

Procedure NA for arrivals on PUB VORTAC airway radials 267 CW 354.

8100 352° 8100 313° (21.4) 8100 BRK 22.7 Arc

LOM PETEY 407 CO

IAF PUEBLO 116.7 PUB Chan 114



GS 3.00° TCH 51	7.4 NM		6 NM	
CATEGORY	A	B	C	D
S-ILS 35L *	6275/24		200 (100-½)	
S-LOC 35L	6540/24 465 (400-½)		6540/50 465 (400-1)	
C CIRCLING	6740-1 553 (600-1)	6800-1 613 (700-1)	7040-2½ 853 (900-2½)	7260-3 1073 (1100-3)

SW-1, 15 JUL 2021 to 12 AUG 2021

SW-1, 15 JUL 2021 to 12 AUG 2021