

RNAV (RNP) Z RWY 35R

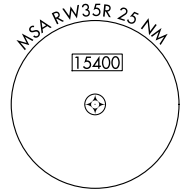
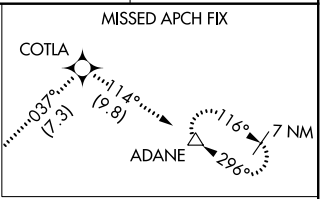
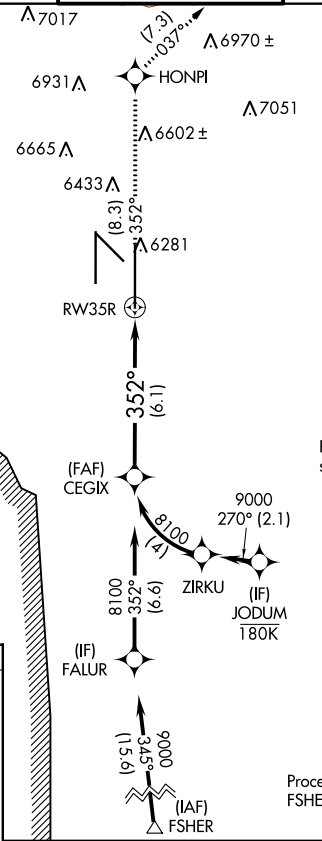
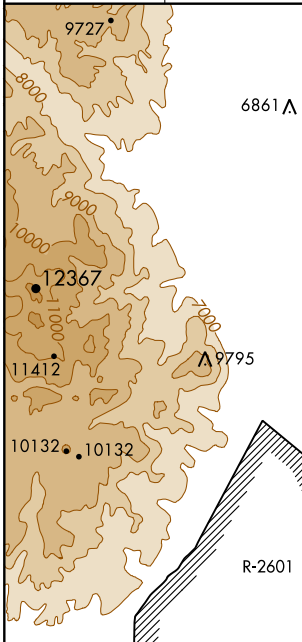
CITY OF COLORADO SPRINGS MUNI (COS)

APP CRS	Rwy Idg	13501
352°	TDZE	6118
	Apt Elev	6187

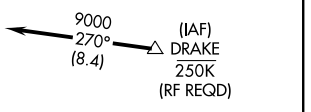
⚠ For uncompensated Baro-VNAV systems, procedure NA below -21°C (-5°F) or above 45°C (113°F). GPS required.

MISSED APPROACH: Climb to 9000 on track 352° to HONPI and track 037° to COTLA and track 114° to ADANE and hold.

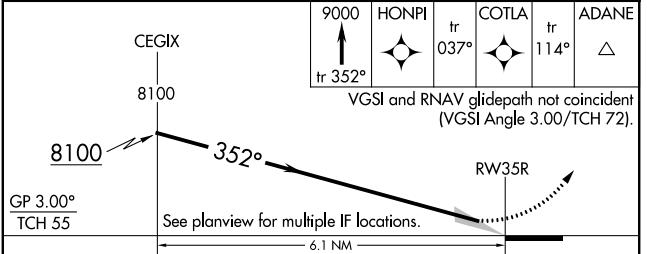
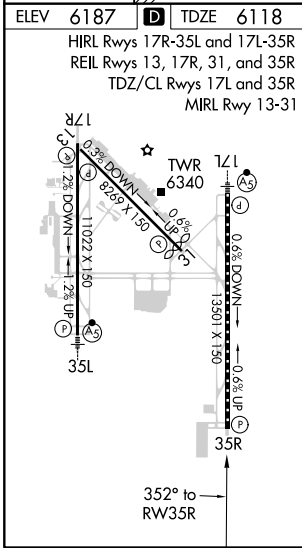
ATIS 125.0 254.3	SPRINGS APP CON 124.0 257.875	SPRINGS TOWER 119.9 360.6	GND CON 121.7 348.6	CLNC DEL 134.45 363.125
-----------------------------------	--	--	--------------------------------------	--



Procedure NA for arrivals at DRAKE on V83 southeast bound and V389 southbound



Procedure NA for arrivals at FSHER on V244 eastbound.



CATEGORY	A	B	C	D
RNP 0.30 DA	6461/60		343 (300-1¼)	

AUTHORIZATION REQUIRED

SW-1, 15 JUL 2021 to 12 AUG 2021

SW-1, 15 JUL 2021 to 12 AUG 2021