
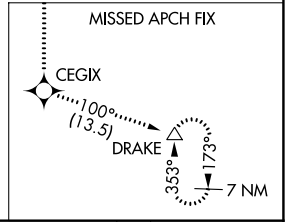
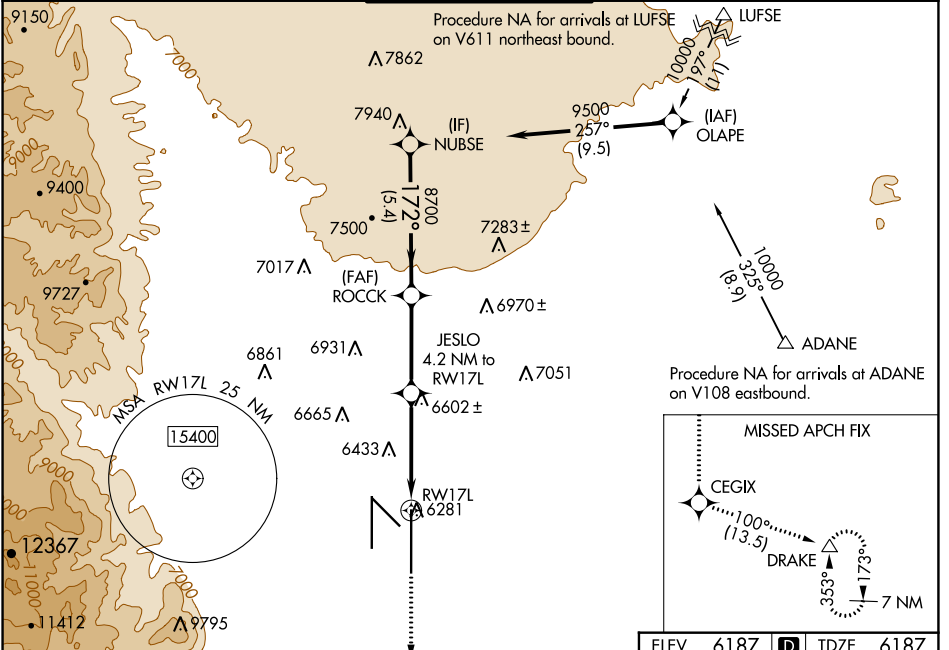


WAAS CH 69618 W17A	APP CRS 172°	Rwy Idg TDZE Apt Elev	13501 6187 6187
--	------------------------	-----------------------------	--

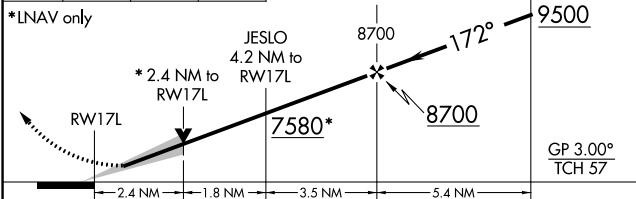
RNAV (GPS) Y RWY 17L

CITY OF COLORADO SPRINGS MUNI (COS)

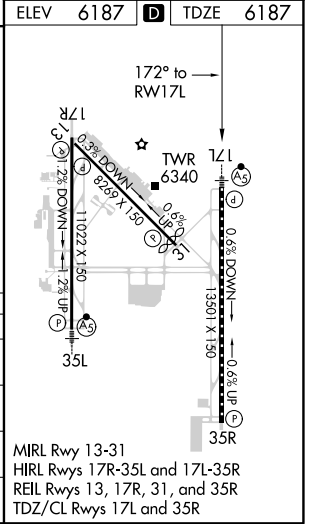
▼ For uncompensated Baro-VNAV systems, LNAV/VNAV NA below -21°C (-5°F) or above 44°C (112°F). DME/DME RNP-0.3 NA. For inop MALSR, increase LNAV Cat C/D visibility to 1/2 SM.	MALSR 		MISSED APPROACH: Climb to 9000 direct CEGIX and on track 100° to DRAKE and hold.	
	ATIS 125.0 254.3	SPRINGS APP CON 124.0 257.875	SPRINGS TOWER 119.9 360.6	GND CON 121.7 348.6



9000	CEGIX	tr 100°	DRAKE	VGSI and RNAV glidepath not coincident (VGSI Angle 3.00/TCH 53).
------	-------	---------	-------	--



CATEGORY	A	B	C	D
LPV DA		6387/18	200 (200-1/2)	
LNAV/VNAV DA		6602/45	415 (500-3/4)	
LNAV MDA	7000/24 813 (900-1/2)	7000/40 813 (900-3/4)	7000-17/8	813 (900-17/8)
C CIRCLING	7000-1 1/4	813 (900-1 1/4)	7040-2 1/2 853 (900-2 1/2)	7260-3 1073 (1100-3)



SW-1, 15 JUL 2021 to 12 AUG 2021

SW-1, 15 JUL 2021 to 12 AUG 2021