

# RNAV (GPS) Y RWY 35R

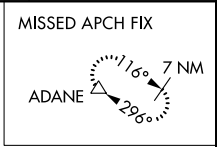
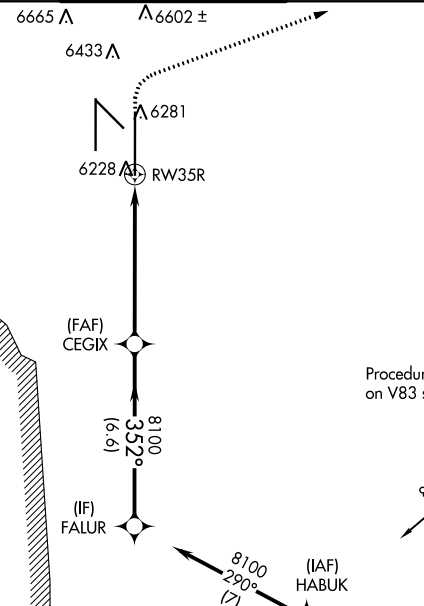
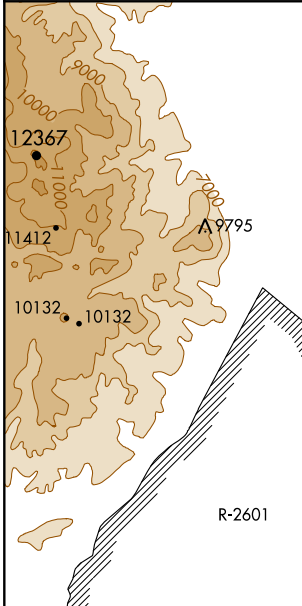
CITY OF COLORADO SPRINGS MUNI (COS)

WAAS CH <b>53602</b> <b>W35B</b>	APP CRS <b>352°</b>	Rwy Idg TDZE Apt Elev	<b>13501</b> <b>6118</b> <b>6187</b>
--	------------------------	-----------------------------	--

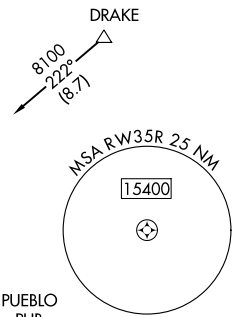
**⚠** For uncompensated Baro-VNAV systems, LNAV/VNAV NA below -21°C (-5°F) or above 39°C (103°F). DME/DME RNP-0.3 NA. RADAR monitoring required when R-2601 in use.

ATIS <b>125.0 254.3</b>	SPRINGS APP CON <b>124.0 257.875</b>	SPRINGS TOWER <b>119.9 360.6</b>	GND CON <b>121.7 348.6</b>	CLNC DEL <b>134.45 363.125</b>
----------------------------	---	-------------------------------------	-------------------------------	-----------------------------------

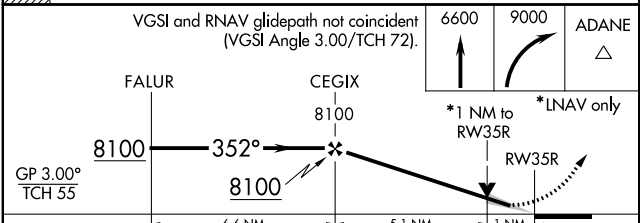
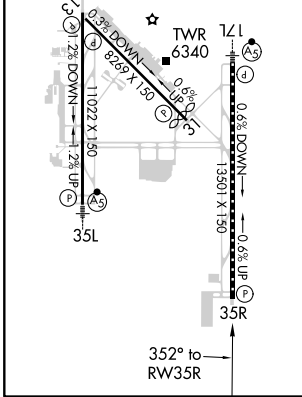
**MISSED APPROACH:** Climb to 6600 then climbing right turn to 9000 direct ADANE and hold.



Procedure NA for arrivals at DRAKE on V83 southeast bound.



ELEV <b>6187</b>	<b>D</b>	TDZE <b>6118</b>
MIRL Rwy 13-31		
HIRL Rwy 17R-35L and 17L-35R		
REIL Rwy 13, 17R, 31, and 35R		
TDZ/CL Rwy 17L and 35R		



CATEGORY	A	B	C	D
LPV DA		6318/40	200 (200-¾)	
LNAV/VNAV DA		6399/45	281 (300-¾)	
LNAV MDA	6500/55	382 (400-1)	6500/60	382 (400-1½)
CIRCLING	6740-1	6800-1	7040-2½	7260-3
	553 (600-1)	613 (700-1)	853 (900-2½)	1073 (1100-3)

SW-1, 15 JUL 2021 to 12 AUG 2021

SW-1, 15 JUL 2021 to 12 AUG 2021