

WAAS CH <b>45724</b> W17A	APP CRS <b>166°</b>	Rwy Idg TDZE Apt Elev	<b>5502</b> <b>4759</b> <b>4759</b>
---------------------------------	------------------------	-----------------------------	---

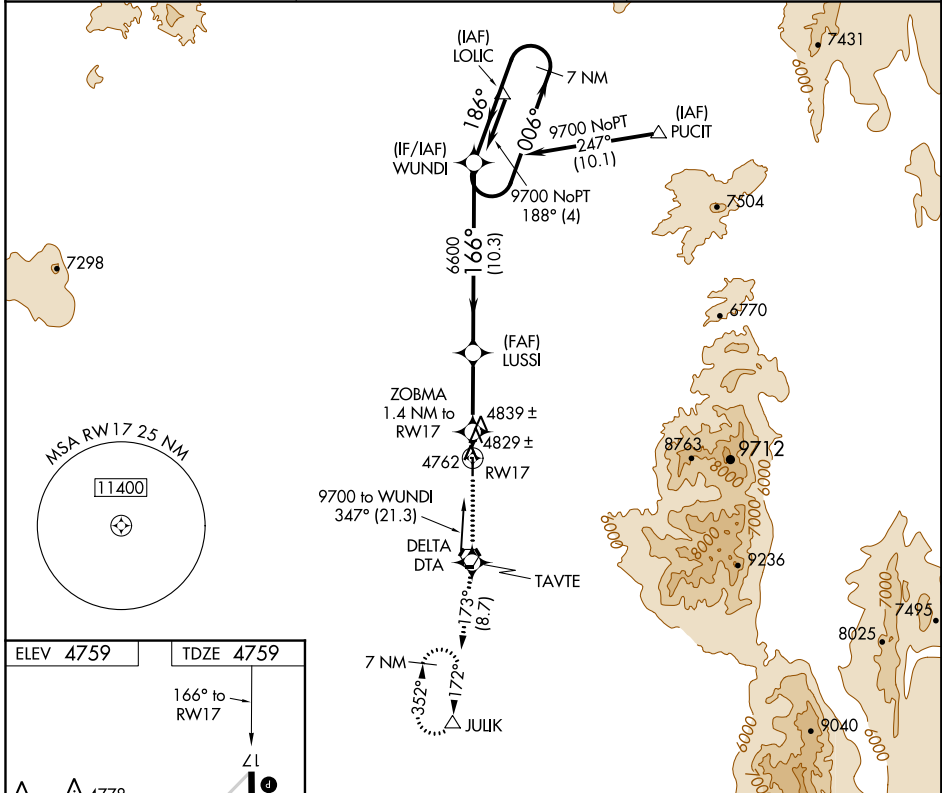
# RNAV (GPS) RWY 17

DELTA MUNI (DTA)

RNP APCH.  
 ▼ Rwy 17 helicopter visibility reduction below 3/4 SM NA.  
 ▲ NA When local altimeter setting not received, procedure NA.

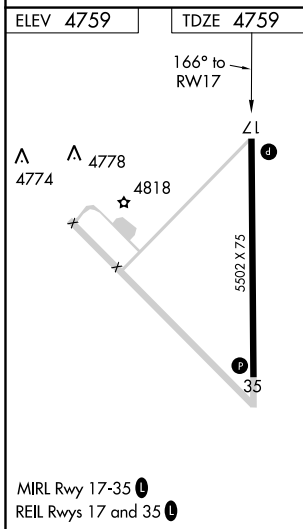
MISSED APPROACH: Climb to 12000 direct TAVTE and on track 173° to JULIK and hold, continue climb-in-hold to 12000.

AWOS-3 <b>127.75</b>	SALT LAKE CENTER <b>127.825 239.025</b>	UNICOM <b>122.8 (CTAF) 0</b>
-------------------------	--	---------------------------------



SW-4, 15 JUL 2021 to 12 AUG 2021

SW-4, 15 JUL 2021 to 12 AUG 2021



12000	TAVTE	JULIK	VGSi and descent angles not coincident (VGSi Angle 3.00/TCH 31).	
↑	✦	tr 173°	7 NM Holding Pattern	WUNDI
ZOBMA 1.4 NM to RW17		LUSLI	006° → 9700	
RW17		5240	166°	← 186°
1.4 NM		4.3 NM	10.3 NM	
CATEGORY	A	B	C	D
LP MDA	5080-1 321 (400-1)			
LNAV MDA	5100-1 341 (400-1)			