

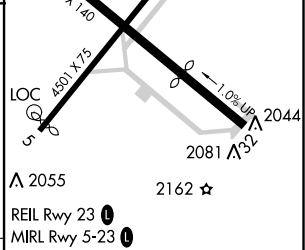
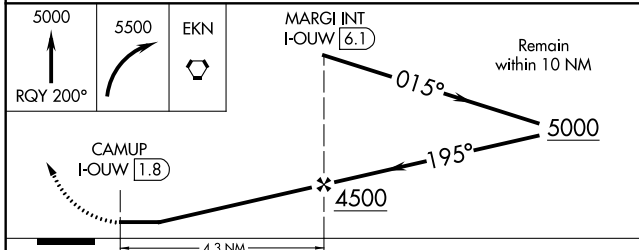
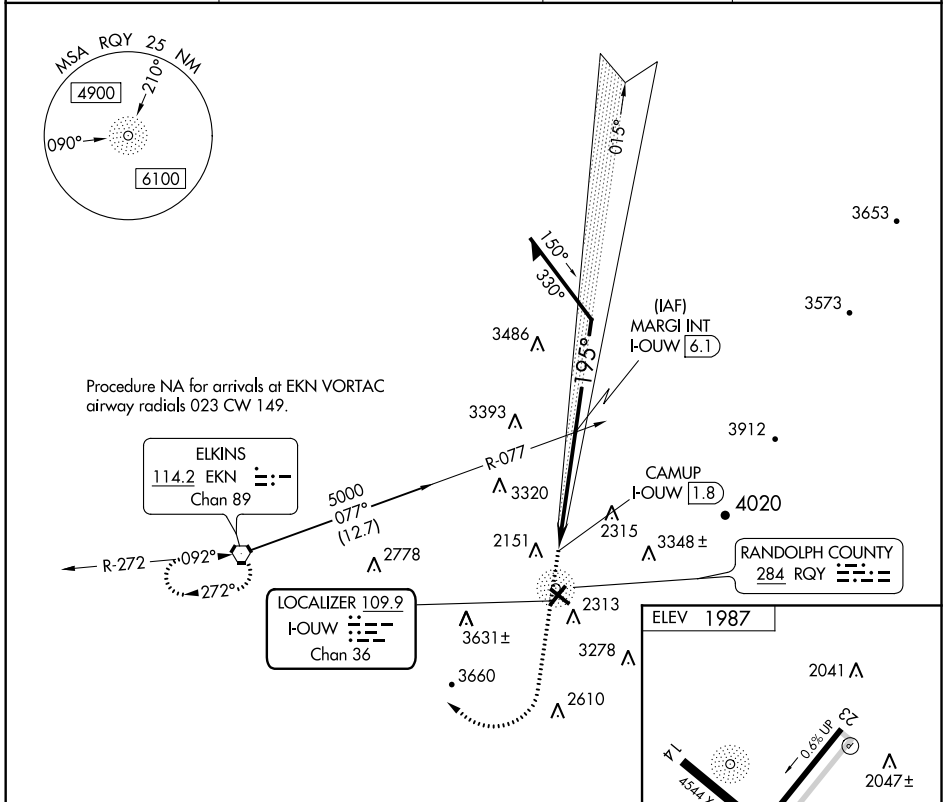
LOC/DME I-OUW <b>109.9</b> Chan <b>36</b>	APP CRS <b>195°</b>	Rwy Idg TDZE Apt Elev	<b>N/A</b> <b>N/A</b> <b>1987</b>
---	------------------------	-----------------------------	---

ELKINS-  
RANDOLPH COUNTY-JENNINGS RANDOLPH FLD (EKN)

**LDA-C**  
RANDOLPH COUNTY-JENNINGS RANDOLPH FLD (EKN)

ADF REQUIRED	MISSED APPROACH: Climb to 5000 on RQY NDB 200° then climbing right turn to 5500 direct EKN VORTAC and hold.
<p>⚠ Circling Rwy 14, 23, 32 NA at night. When local altimeter setting not received, use Buckhannon altimeter setting and increase all MDA 100 feet.</p> <p>❄ -20°C</p>	

ASOS <b>119.275</b>	CLARKSBURG APP CON ★ <b>121.15 284.65</b>	CTAF <b>123.6</b>	<b>122.9 0</b>
------------------------	--	----------------------	----------------



CATEGORY	A	B	C	D	FAF to MAP 4.3 NM					
CIRCLING	3100-1¼	3140-1½	3720-3	4020-3	Knots	60	90	120	150	180
	1113 (1200-1¼)	1153 (1200-1½)	1733 (1800-3)	2033 (2100-3)	Min:Sec	4:18	2:52	2:09	1:43	1:26

NE-4, 15 JUL 2021 to 12 AUG 2021

NE-4, 15 JUL 2021 to 12 AUG 2021