

APP CRS **211°**
 Rwy ldg **4501**
 TDZE **1958**
 Apt Elev **1987**

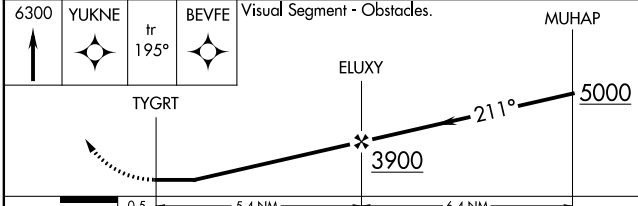
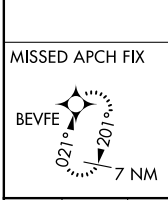
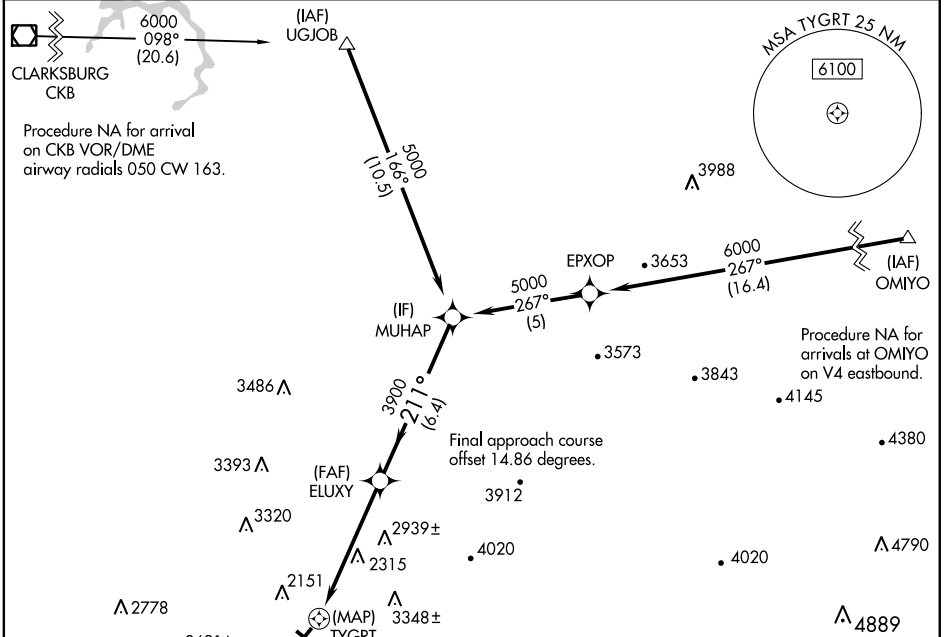
RNAV (GPS) RWY 23

ELKINS-RANDOLPH COUNTY-JENNINGS RANDOLPH FLD (EKN)

RNP APCH. Straight-in Rwy 23 NA at night, Circling to Rwy 14, 23, 32 NA at night.
 When local altimeter setting not received, use Buckhannon altimeter setting and increase all MDAs 100 feet. Rwy 23 helicopter visibility reduction below 1 SM NA.
 -20°C

MISSED APPROACH: Climb to 6300 direct YUKNE and on track 195° to BEVFE and hold, continue climb-in hold to 6300.

| | | | |
|------------------------|--|----------------------|--------------|
| ASOS 119.275 | CLARKSBURG APP CON ★ 121.15 284.65 | CTAF 123.6 | 122.9 |
|------------------------|--|----------------------|--------------|



| | |
|-----------|-----------|
| ELEV 1987 | TDZE 1958 |
|-----------|-----------|

Obstacle grid altitudes: 2041, 2047±, 2044, 2081, 2162, 2055, 2047±, 2044, 2081, 2162, 2055.

Obstacle grid bearings: 4501 X 175, 4504 X 140, 0.6% UP, 1.0% UP.

REIL Rwy 23

MIRL Rwy 5-23

| CATEGORY | A | B | C | D |
|----------|---------------------------|---------------------------|-------------------------|---------------|
| LNVA MDA | 3160-1¼ 1202 (1200-1¼) | 3160-1½ 1202 (1200-1½) | 3160-3 | 1202 (1200-3) |
| CIRCLING | 3160-1¼ 1173 (1200-1¼) | 3160-1½ 1173 (1200-1½) | 3720-3 1733 (1800-3) | NA |

RNAV (GPS) RWY 23

NE-4, 15 JUL 2021 to 12 AUG 2021

NE-4, 15 JUL 2021 to 12 AUG 2021