

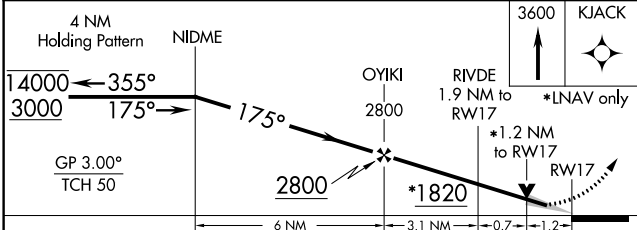
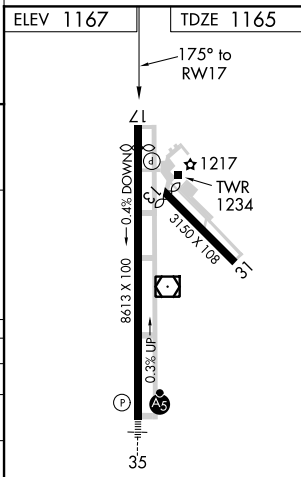
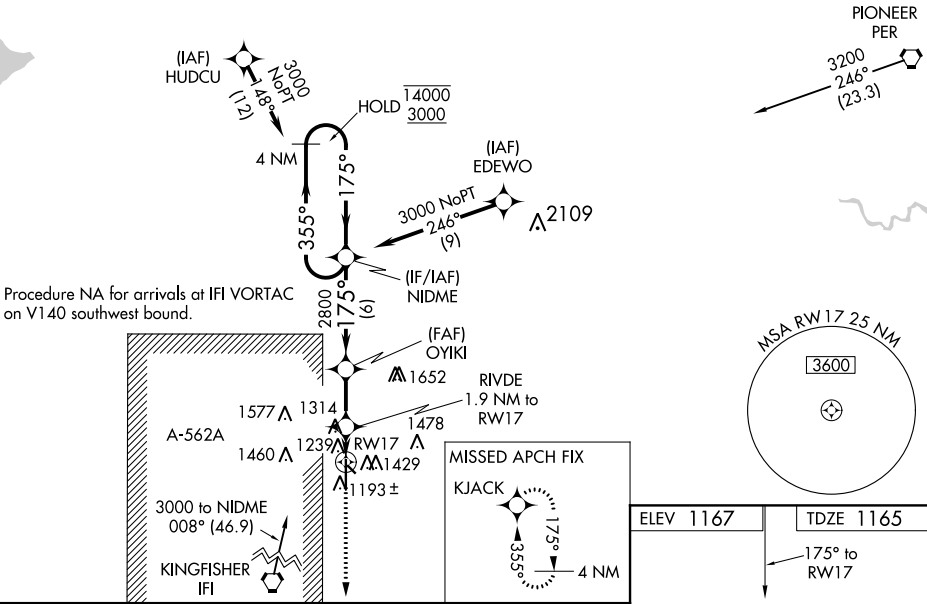
WAAS CH 50213 W17A	APP CRS 175°	Rwy Idg 8002 TDZE 1165 Apt Elev 1167
----------------------------------------	------------------------	-----------------------------------------------------------------

RNAV (GPS) RWY 17

ENID WOODRING RGNL (WDG)

RNP APCH.		MISSED APPROACH: Climb to 3600 direct KJACK and hold.	
AWOS-3 120.625	VANCE APP CON * 121.3 346.325	WOODRING TOWER * 118.9 (CTAF) 0 257.95	GND CON 121.925

Procedure NA for arrival on PER VORTAC
airway radials 173 CW 335.



CATEGORY	A	B	C	D	E
LPV DA	1415-3/4		250 (300-3/4)		
LNAV/VNAV DA	1415-3/4		250 (300-3/4)		1415-5/8 250 (300-5/8)
LNAV MDA	1580-1	415 (500-1)	1580-1 1/8		415 (500-1 1/8)
C CIRCLING	1760-1	593 (600-1)	1820-1 1/4 653 (700-1 1/4)	1880-2 1/4 713 (800-2 1/4)	2000-3 833 (900-3)

SC-1, 15 JUL 2021 to 12 AUG 2021

SC-1, 15 JUL 2021 to 12 AUG 2021