

WAAS CH 97413 W35A	APP CRS 355°	Rwy Idg 8613 TDZE 1147 Apt Elev 1167
--	------------------------	---

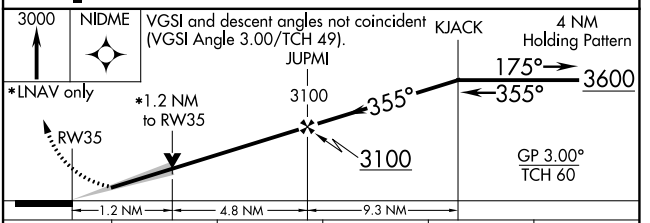
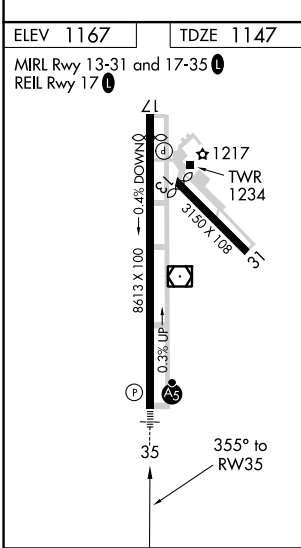
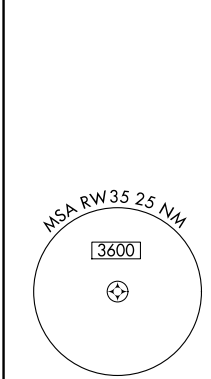
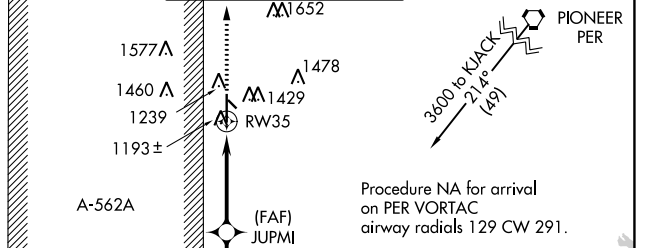
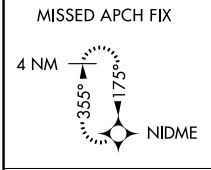
RNAV (GPS) RWY 35

ENID WOODRING RGNL (WDG)

⚠ For uncompensated Baro-VNAV systems, LNAV/VNAV NA below -17°C (2°F) or above 54°C (130°F). Circling Rwy 13 NA at night. DME/DME RNP-0.3 NA. For inop ALS, increase LPV Cat E visibility to ¾ SM, increase LNAV/VNAV all Cats visibility to ¾ SM, increase LNAV Cat E visibility to ¼ SM.

MALSRS MISSED APPROACH: Climb to 3000 direct NIDME and hold.

AWOS-3 120.625	VANCE APP CON ★ 121.3 346.325	WOODRING TOWER ★ 118.9 (CTAF) 0 257.95	GND CON 121.925
--------------------------	---	--	---------------------------



CATEGORY	A	B	C	D	E
LPV DA		1347-½	200 (200-½)		
LNAV/VNAV DA		1397-½	250 (300-½)		
LNAV MDA	1580-½	433 (500-½)	1580-¾	433 (500-¾)	
<input checked="" type="checkbox"/> CIRCLING	1760-1	593 (600-1)	1820-1¾ 653 (700-1¾)	1880-2¼ 713 (800-2¼)	2000-3 833 (900-3)

SC-1, 15 JUL 2021 to 12 AUG 2021

SC-1, 15 JUL 2021 to 12 AUG 2021