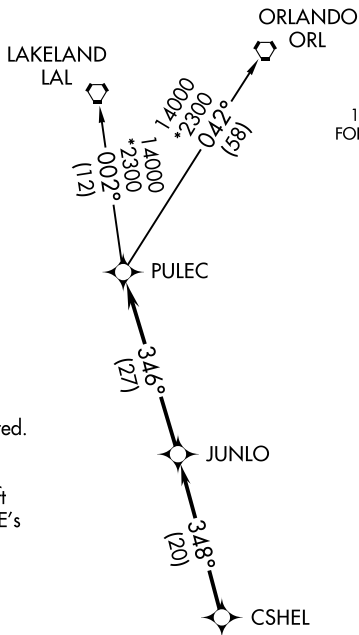


CSHEL SIX DEPARTURE (RNAV)

**TOP ALTITUDE:
2000**

| | |
|--------------------|-------------|
| ATIS | 123.725 |
| CLNC DEL | 121.7 |
| GND CON | 121.7 |
| PAGE TOWER | * |
| 119.0 (CTAF) | 306.95 |
| FORT MYERS DEP CON | * |
| | 126.8 306.2 |



- NOTE: RADAR required.
- NOTE: DME/DME/IRU or GPS required.
- NOTE: RNAV 1.
- NOTE: For turbojet aircraft only.
- NOTE: For non-GPS equipped aircraft LAL, LBV, RSW, and SRQ DME's must be operational.

TAKEOFF MINIMUMS
Rwys 5, 13, 23, 31: Standard.



NOTE: Chart not to scale.



DEPARTURE ROUTE DESCRIPTION

TAKEOFF ALL RWYS: Climb on assigned heading for RADAR vectors to CSHEL, then on depicted route to PULEC, thence. . . .

. . . . on (transition). Maintain 2000, or as assigned by ATC, expect filed altitude/flight level 10 minutes after departure.

LAKELAND TRANSITION (CSHEL6.LAL)
ORLANDO TRANSITION (CSHEL6.ORL)