

WAAS CH 73024 W13A	APP CRS 133°	Rwy Idg 4297 TDZE 15 Apt Elev 17
--	------------------------	---

RNAV (GPS) RWY 13

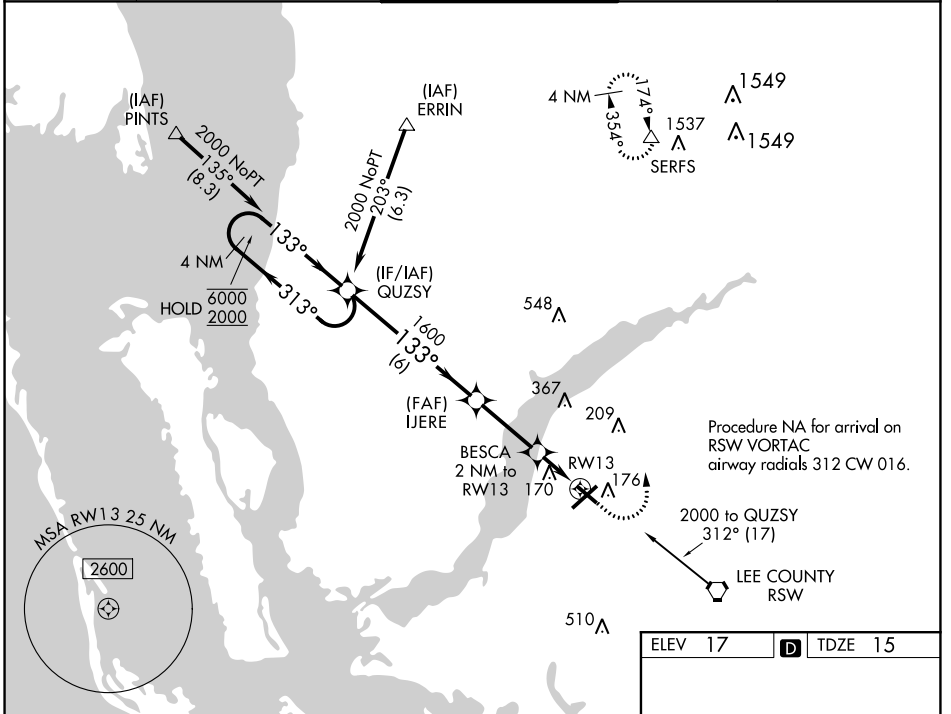
PAGE FLD (FMY)

RNP APCH.

When Circling to Rwy 31 at night, operational VGSI required, remain on or above VGSI glidepath until threshold. For uncompensated Baro-VNAV systems, LNAV/VNAV NA below -15°C or above 54°C.

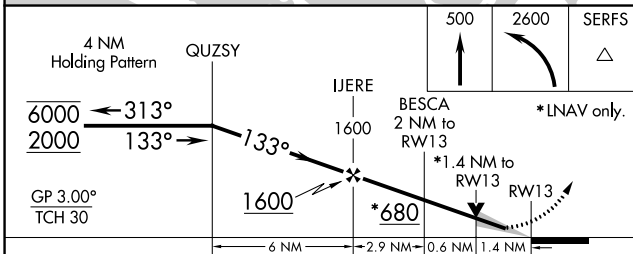
ATIS 123.725	FORT MYERS APP CON ★ 125.15 306.2 (Rwys 5, 13) 126.8 306.2 (Rwys 23, 31)	PAGE TOWER ★ 119.0 (CTAF) 306.95
------------------------	--	---

MISSED APPROACH: Climb to 500 then climbing left turn to 2600 direct SERFS and hold.

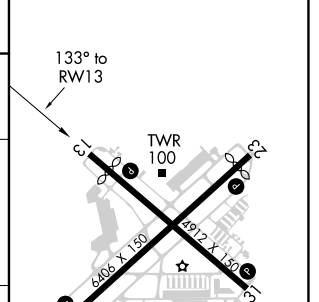


SE-3, 15 JUL 2021 to 12 AUG 2021

SE-3, 15 JUL 2021 to 12 AUG 2021



ELEV 17	TDZE 15
---------	---------



CATEGORY	A	B	C	D
LPV DA	265-1	250 (300-1)		
LNAV/VNAV DA	480-1½	465 (500-1½)		
LNAV MDA	480-1	465 (500-1)	480-1½	465 (500-1½)
CIRCLING	540-1	523 (600-1)	600-1½ 583 (600-1½)	680-2 663 (700-2)

REIL Rwys 5, 13, 23 and 31
MIRL Rwy 5-23 and 13-31