

WAAS CH 69424 W23A	APP CRS 231°	Rwy Idg TDZE Apt Elev	6007 16 17
--	------------------------	-----------------------------	---------------------------------------

RNAV (GPS) RWY 23

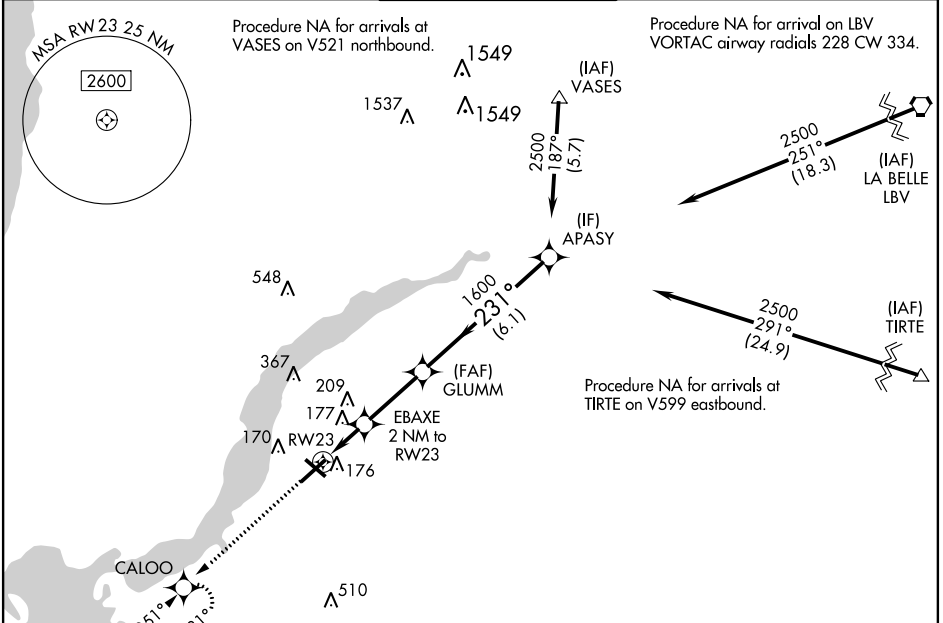
PAGE FLD (FMY)

RNP APCH.

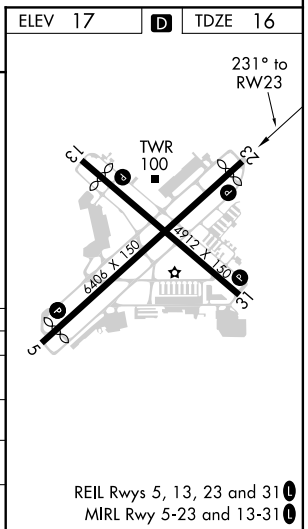
▼ When Circling to Rwy 31 at night, operational VGSI required, remain on or above VGSI glidepath until threshold. Rwy 23 helicopter visibility reduction below 3/4 SM NA. For uncompensated Baro-VNAV systems, LNAV/VNAV NA below 4°C or above 54°C.

MISSED APPROACH:
Climb to 2000 direct
CALOO and hold.

ATIS 123.725	FORT MYERS APP CON ★ 125.15 306.2 (Rwys 5, 13) 126.8 306.2 (Rwys 23, 31)	PAGE TOWER ★ 119.0 (CTAF) 306.95	GND CON 121.7	CLNC DEL 121.7
------------------------	--	---	-------------------------	--------------------------



2000	CALOO	APASY			
*LNAV only.	EBAXE 2 NM to RW23	GLUMM 1600	231°	2500	GP 3.00° TCH 55
RW23	*1.2 NM to RW23	700*	1600		
1.2 NM	0.8 NM	2.8 NM	6.1 NM		
CATEGORY	A	B	C	D	
LPV DA	274-3/4		258 (300-3/4)		
LNAV/VNAV DA	377-1		361 (400-1)		
LNAV MDA	440-1	424 (500-1)	440-1 1/4	424 (500-1 1/4)	
CIRCLING	540-1	523 (600-1)	600-1 1/2	680-2	663 (700-2)



SE-3, 15 JUL 2021 to 12 AUG 2021

SE-3, 15 JUL 2021 to 12 AUG 2021