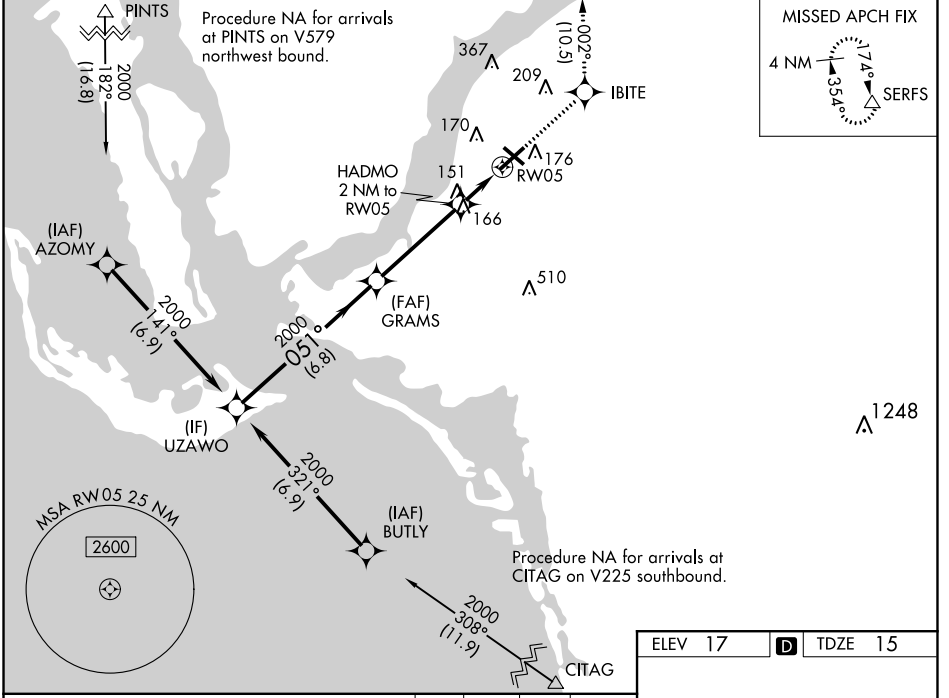


WAAS CH 72624 W05A	APP CRS 051°	Rwy Idg TDZE 15 Apt Elev 17	5947
--	------------------------	---	-------------

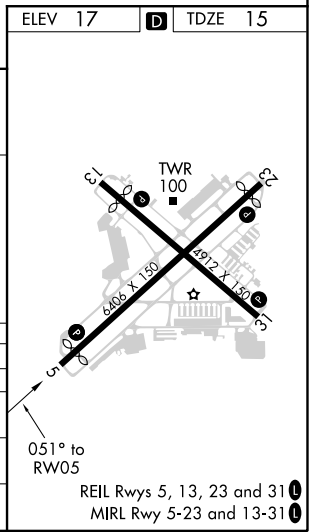
RNAV (GPS) RWY 5

PAGE FLD (FMY)

RNP APCH.		MISSED APPROACH: Climb to 2600 direct IBITE and on track 002° to SERFS and hold.	
<p>▼ When Circling to Rwy 31 at night, operational VGSI required, remain on or above VGSI glidepath until threshold. Rwy 5 helicopter visibility reduction below 3/4 SM NA. For uncompensated Baro-VNAV systems, LNAV/VNAV NA below 4°C or above 54°C.</p>			
ATIS 123.725	FORT MYERS APP CON ★ 125.15 306.2 (Rwys 5, 13) 126.8 306.2 (Rwys 23, 31)	PAGE TOWER ★ 119.0 (CTAF) 306.95	GND CON 121.7
		CLNC DEL 121.7	



	2600	IBITE	tr 002°	SERFS
	↑	◆		△
			*LNAV only.	
UZAWO	GRAMS	HADMO	RW05	
2000	2000	2 NM to RW05	1.1 NM to RW05	
GP 3.00°	051°	*700		
TCH 53	2000			
	6.8 NM	4.1 NM	0.9 NM	1.1 NM
CATEGORY	A	B	C	D
LPV DA		265-3/4	250 (300-3/4)	
LNAV/VNAV DA		317-7/8	302 (300-7/8)	
LNAV MDA	420-1	405 (500-1)	420-1 1/8	405 (500-1 1/8)
C CIRCLING	540-1	523 (600-1)	600-1 1/2	680-2
			583 (600-1 1/2)	663 (700-2)



SE-3, 15 JUL 2021 to 12 AUG 2021

SE-3, 15 JUL 2021 to 12 AUG 2021