

VORTAC RSW 111.8 Chan 55	APP CRS 129°	Rwy Idg 4297 TDZE 15 Apt Elev 17
---------------------------------------	------------------------	-------------------------------------------------------------

VOR RWY 13

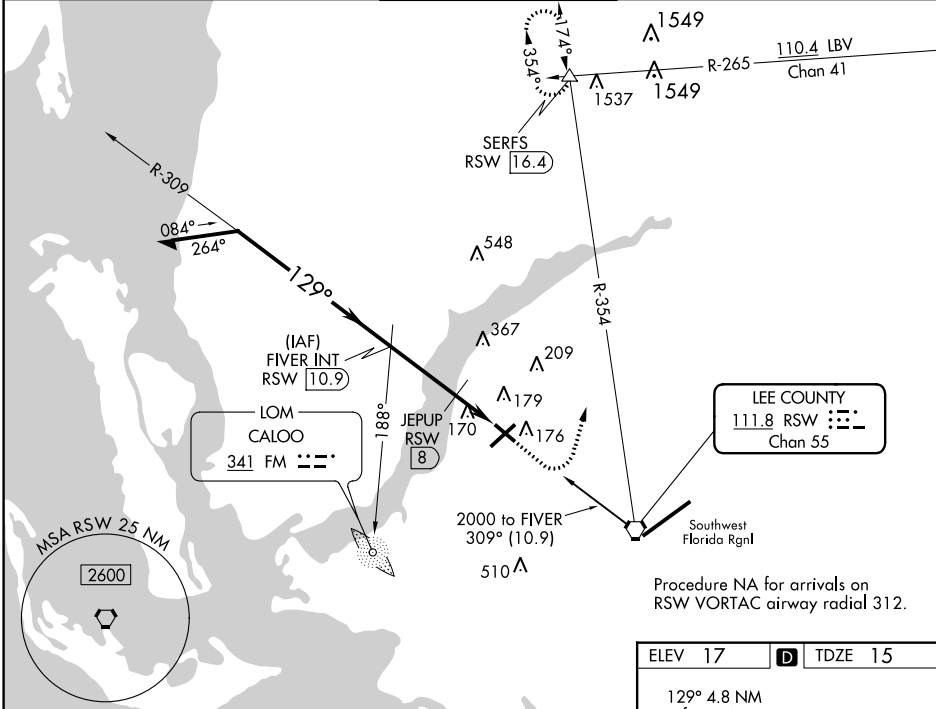
PAGE FLD (FMY)

ADF or DME required.

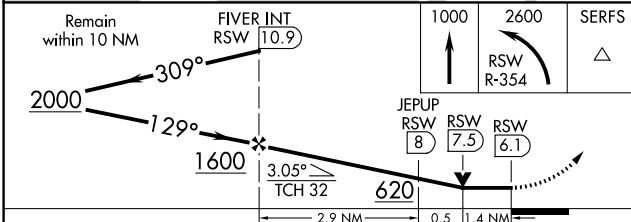
When Circling to Rwy 31 at night, operational VGSI required, remain on or above VGSI glidepath until threshold.

MISSED APPROACH: Climb to 1000 then climbing left turn to 2600 on RSW VORTAC R-354 to SERFS INT/RSW 16.4 DME and hold.

ATIS 123.725	FORT MYERS APP CON ★ 125.15 306.2 (Rwys 5, 13) 126.8 306.2 (Rwys 23, 31)	PAGE TOWER ★ 119.0 (CTAF) 306.95	GND CON 121.7	CLNC DEL 121.7
------------------------	----------------------------------------------------------------------------------------------	---------------------------------------------------	-------------------------	--------------------------



Procedure NA for arrivals on RSW VORTAC airway radial 312.



ELEV 17	TDZE 15
---------	---------

REIL Rwys 5, 13, 23 and 31
MIRL Rwy 5-23 and 13-31

FAF to MAP 4.8 NM					
Knots	60	90	120	150	180
Min:Sec	4:48	3:12	2:24	1:55	1:36

CATEGORY	A	B	C	D
S-13	620-1	605 (700-1)	620-1¾	605 (700-1¾)
C CIRCLING	620-1	603 (700-1)	620-1¾	680-2 663 (700-2)
JEPUP FIX MINIMUMS				
S-13	480-1	465 (500-1)	480-1¾	465 (500-1¾)
C CIRCLING	540-1	523 (600-1)	600-1½ 583 (600-1½)	680-2 663 (700-2)

SE-3, 15 JUL 2021 to 12 AUG 2021

SE-3, 15 JUL 2021 to 12 AUG 2021