

LOC/DME I-MED 111.1 Chan 48	APP CRS 093°	Rwy Idg 12246 TDZE 672 Apt Elev 680
---	------------------------	--

ILS RWY 10L (CAT II & III)

CHICAGO O'HARE INTL (ORD)

From GIBNS: RNAV-1 GPS required.
 RNAV 1-GPS or RADAR required for procedure entry. DME or RADAR required.
 Simultaneous approach authorized.

CHICAGO APP CON 119.0 292.125	O'HARE TOWERS 128.15 348.0 (Rwy 9L/27R) 133.0 348.0 (10R/28L) 126.9 132.7 348.0 (CENTER)	GND CON (TWR NORTH) 124.125 (TWR SOUTH) 118.05 (ALL TWRs) 226.675	(TWR CENTER) 121.75 (OBND) 121.9 (IBND)	CLNC DEL 121.6
---	--	---	---	--------------------------

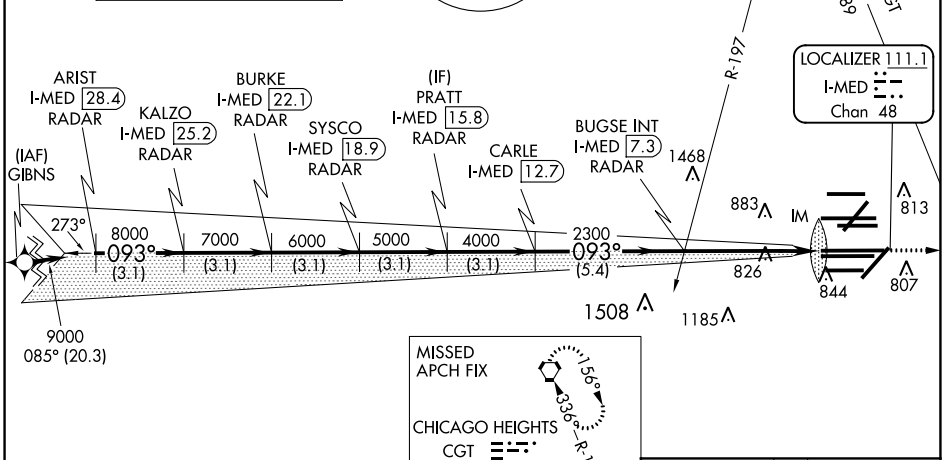
D-ATIS **135.4**
282.225

ALTERNATE MISSED APCH FIX

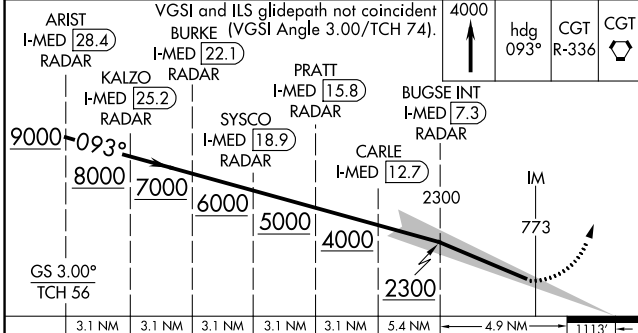
MSA ORD 25 NM
3400

NORTHBROOK
113.0 OBK
Chan 77

CPDLC

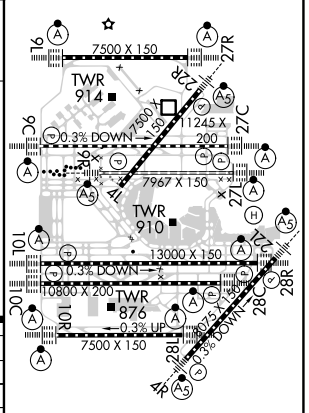


MISSED APCH FIX
 CHICAGO HEIGHTS CGT 114.2 Chan 89



CATEGORY	A	B	C	D
S-ILS 10L	CAT II RA 95/12 100 DA 772			
S-ILS 10L	CAT III RVR 06			

ELEV 680 TDZE 672



CATEGORY II and III ILS - SPECIAL AIRCREW & AIRCRAFT CERTIFICATION REQUIRED

HIRL all Rwys
 TDZ/CL all Rwys except 4L

EC-3, 15 JUL 2021 to 12 AUG 2021

EC-3, 15 JUL 2021 to 12 AUG 2021