

# ILS RWY 22L (SA CAT I & II) CHICAGO O'HARE INTL (ORD)

LOC I-LQQ	APP CRS	Rwy ldg TDZE	8075 654
<b>110.1</b>	<b>225°</b>	Apt Elev	680

RADAR required for procedure entry.

Simultaneous approach authorized.  
 SA CAT I: Requires specific OPSPEC, MSPEC, or LOA approval and use of HUD to DH.  
 SA CAT II: Reduced lighting: Requires specific OPSPEC, MSPEC, or LOA approval and use of autoland or HUD to touchdown.



**MISSED APPROACH:**  
 Climb to 1100 then climbing left turn to 4000 direct CGT VORTAC and hold.

CHICAGO APP CON	O'HARE TOWERS	GND CON	(TWR CENTER)	CLNC DEL
<b>119.0 292.125</b>	<b>128.15 348.0</b> (Rwy 9L/27R) <b>133.0 348.0</b> (110R/28L)	<b>124.125</b> (TWR NORTH) <b>118.05</b> (TWR SOUTH) <b>226.675</b> (ALL TWRs)	<b>121.75</b> (OBND) <b>121.9</b> (IBND)	<b>121.6</b>

D-ATIS  
**135.4**  
**282.225**

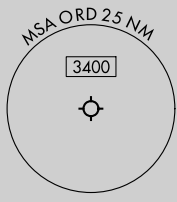
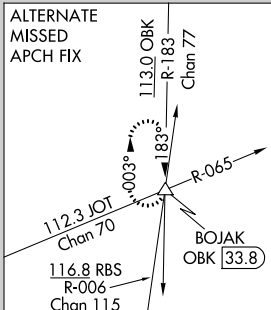
CPDLC

NORTHBROOK  
 113.0 OBK  
 Chan 77

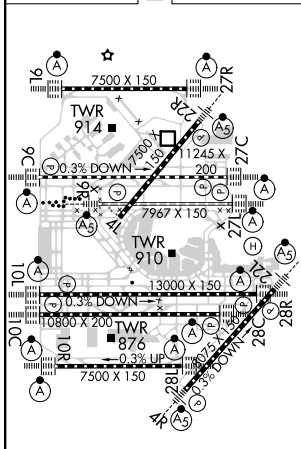
CHICAGO  
 Chan 19(Y)  
 GCO (108.25)

LOCALIZER 110.1  
 I-LQQ

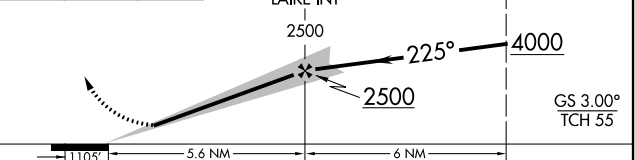
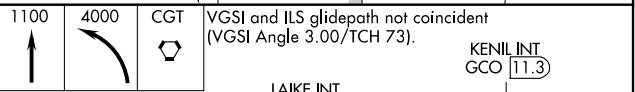
MISSED APCH FIX  
 CHICAGO HEIGHTS  
 CGT 114.2  
 Chan 89



ELEV 680 **D** TDZE 654



HIRL all Rwys  
 TDZ/CL all Rwys except 4L



CATEGORY	A	B	C	D
S-ILS 22L	SA CAT I	RA 164/16	150 DA 804	
S-ILS 22L	SA CAT II	RA 112/12	100 DA 754	

**SA CATEGORY I & II ILS - SPECIAL AIRCREW & AIRCRAFT CERTIFICATION REQUIRED**

EC-3, 15 JUL 2021 to 12 AUG 2021

EC-3, 15 JUL 2021 to 12 AUG 2021