

LOC/DME I-UYJ <b>111.9</b> Chan 56	APP CRS <b>273°</b>	Rwy ldg <b>11245</b> TDZE <b>653</b> Apt Elev <b>680</b>
--	------------------------	--

**ILS RWY 27C (CAT II & III)**  
CHICAGO O'HARE INTL (ORD)

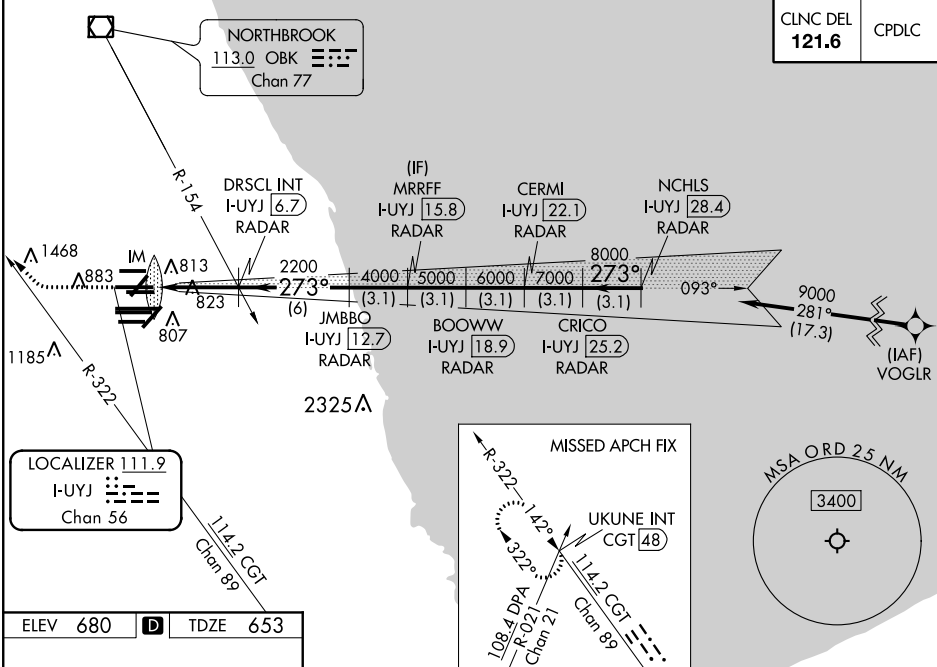
From VOGLR: RNAV 1-GPS required. Aircraft not GPS equipped - RADAR required for procedure entry. DME or RADAR required.

ALSIF-2

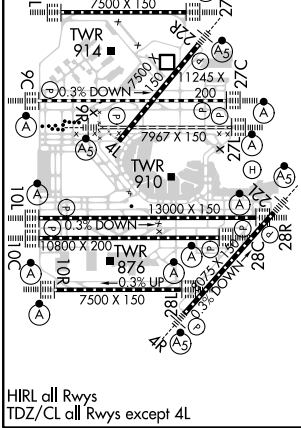
MISSED APPROACH: Climb to 1100 then climbing right turn to 4000 on heading 290° and CGT R-322 to UKUNE INT/CGT 48 DME and hold.

Simultaneous approach authorized. CAT II: RVR 1000 authorized with specific OPSPEC, MSPEC, or LOA approval and use of autoland or HUD to touchdown.

D-ATIS <b>135.4</b>	CHICAGO APP CON <b>119.0 292.125</b>	O'HARE TOWERS <b>128.15 348.0</b> (Rwy 9L/27R) <b>133.0 348.0</b> (10R/28L) <b>120.75 121.15 126.9 132.7 348.0</b> (CENTER)	CND CON (TWR NORTH) <b>124.125</b> (TWR SOUTH) <b>118.05</b> (ALL TWRS) <b>226.675</b>	(TWR CENTER) <b>121.75</b> (IBND) <b>121.9</b>
------------------------	---	--	---	---



ELEV 680	<b>D</b>	TDZE 653
----------	----------	----------



HIRL all Rwys  
TDZ/CL all Rwys except 4L

1100	4000	CGT R-322	UKUNE INT	VGSI and ILS glidepath not coincident (VGSI Angle 3.00/TCH 75).	NCHLS I-UYJ 28.4
				CERMI I-UYJ 22.1 MRRFF I-UYJ 15.8 DRISCL INT I-UYJ 6.7 BOOWW I-UYJ 18.9 JMBBO I-UYJ 12.7 IM 754 108.4 DPA R-021 Chan 21 108.4 DPA R-021 Chan 21	CRICO I-UYJ 25.2 UKUNE INT CGT 48 114.2 CGT Chan 89 142° 322°
9000	8000	7000	6000	5000	4000
3.1 NM	3.1 NM	3.1 NM	3.1 NM	3.1 NM	3.1 NM
CATEGORY A		CATEGORY B		CATEGORY C	
S-ILS 27C		CAT II RA 108/12		100 DA 753	
S-ILS 27C		CAT III		RVR 06	

**CATEGORY II & III ILS - SPECIAL AIRCREW & AIRCRAFT CERTIFICATION REQUIRED**

EC-3, 15 JUL 2021 to 12 AUG 2021

EC-3, 15 JUL 2021 to 12 AUG 2021