

LOC/DME I-UYJ <b>111.9</b> Chan 56	APP CRS <b>273°</b>	Rwy ldg <b>11245</b> TDZE <b>653</b> Apt Elev <b>680</b>
--	------------------------	--

# ILS RWY 27C (SA CAT I)

CHICAGO O'HARE INTL (ORD)

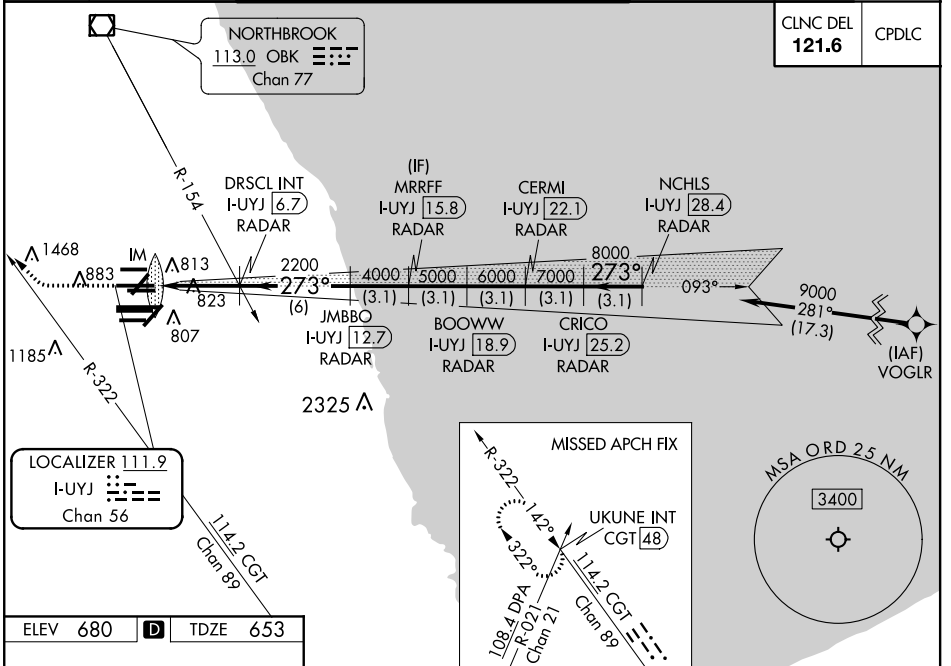
From VOGLR: RNAV 1-GPS required. Aircraft not GPS equipped - RADAR required for procedure entry. DME or RADAR required.

Simultaneous approach authorized. Requires specific OPSPEC, MSPEC, or LOA approval and use of HUD to DH.

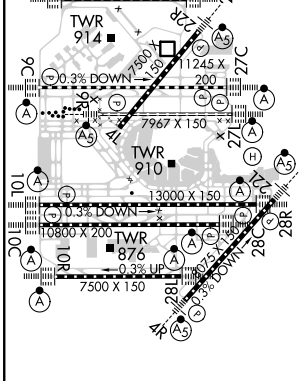
ALSF-2

MISSED APPROACH: Climb to 1100 then climbing right turn to 4000 on heading 290° and CGT R-322 to UKUNE INT/CGT 48 DME and hold.

D-ATIS <b>135.4</b> <b>282.225</b>	CHICAGO APP CON <b>119.0 292.125</b>	O'HARE TOWERS <b>128.15 348.0</b> (Rwy 9L/27R) <b>133.0 348.0</b> (10R/28L) <b>120.75 121.15 126.9 132.7 348.0</b> (CENTER)	CND CON (TWR NORTH) <b>124.125</b> (TWR SOUTH) <b>118.05</b> (ALL TWRs) <b>226.675</b>	(TWR CENTER) <b>121.75</b> (IBND) <b>121.9</b>
--	---	--	--	---



ELEV 680	<b>D</b>	TDZE 653
----------	----------	----------



HIRL all Rwys  
TDZ/CL all Rwys except 4L

1100	4000	CGT R-322	UKUNE INT	VGSI and ILS glidepath not coincident (VGSI Angle 3.00/TCH 75).	NCHLS I-UYJ 28.4 RADAR
↑	hdg 290°				CERMI I-UYJ 22.1 RADAR
					MRRFF I-UYJ 15.8 RADAR
					DRISCL INT I-UYJ 6.7 RADAR
					JMBBO I-UYJ 12.7 RADAR
					BOOWW I-UYJ 18.9 RADAR
					CRICO I-UYJ 25.2 RADAR
					9000
					273° 8000
					GS 3.00° TCH 56
					3.1 NM 3.1 NM 3.1 NM 3.1 NM 3.1 NM
					S-ILS 27C RA 158/14 150 DA 803

**SA CATEGORY I ILS - SPECIAL AIRCREW & AIRCRAFT CERTIFICATION REQUIRED**

EC-3, 15 JUL 2021 to 12 AUG 2021

EC-3, 15 JUL 2021 to 12 AUG 2021