

LOC/DME I-IAC 110.5 Chan 42	APP CRS 273°	Rwy ldg TDZE Apt Elev 7782 654 680
---	------------------------	--

ILS RWY 27L (SA CAT I)

CHICAGO O'HARE INTL (ORD)

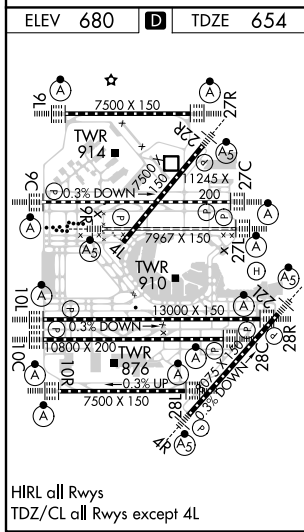
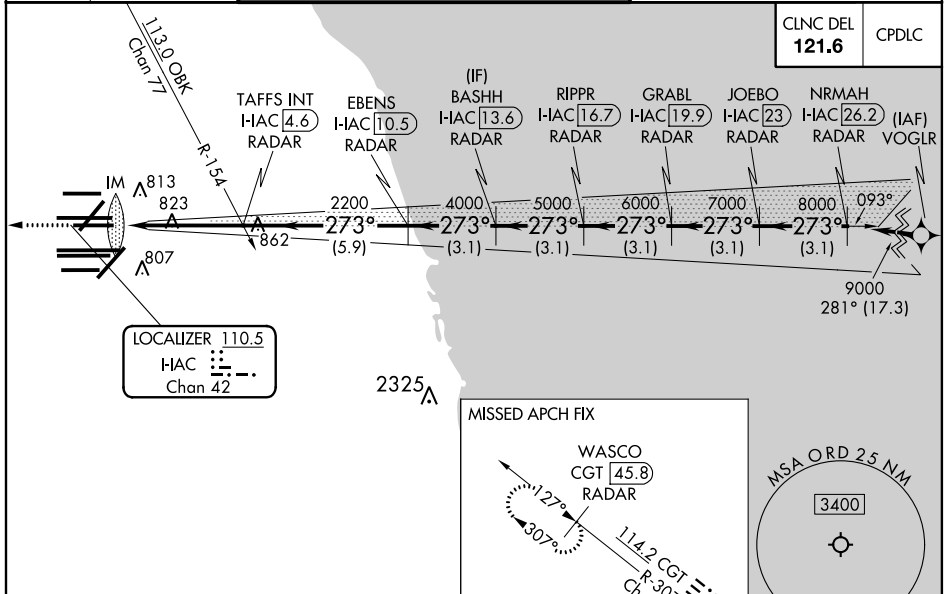
From VOGLR: RNAV 1-GPS required. Aircraft not GPS equipped - RADAR required for procedure entry. DME or RADAR required.

ALSF-2
A

MISSED APPROACH: Climb to 1200 then climb to 4000 on heading 265° and on CGT VORTAC R-307 to WASCO/CGT 45.8 DME/RADAR and hold.

Simultaneous approach authorized. Requires specific OPSPEC, MSPEC, or LOA approval and use of HUD to DH. For inop ALS, increase S-LOC 27L Cat C/D visibility to 1 $\frac{1}{2}$ SM.

D-ATIS 135.4 282.225	CHICAGO APP CON 119.0 292.125	O'HARE TOWERS 128.15 348.0 (Rwy 9L/27R) 133.0 348.0 (10R/28L) 120.75 121.15 126.9 132.7 348.0 (CENTER)			GND CON (TWR NORTH) 124.125 (TWR SOUTH) 118.05 (ALL TWRs) 226.675	(TWR CENTER) 121.75 (ORND) (IBND) 121.9
--	---	--	--	--	--	--



1200	4000	CGT R-307	WASCO CGT 45.8 RADAR	VGSI and ILS glidepath not coincident (VGSI Angle 3.00°/TCH 67).			
hdg 265°				BASHH I-IAC 13.6 RADAR	GRABL I-IAC 19.9 RADAR	NRMAH I-IAC 26.2 RADAR	
HAC DME ANTENNA	TAFFS INT I-IAC 4.6 RADAR	EBENS I-IAC 10.5 RADAR	RIPPR I-IAC 16.7 RADAR	JOEBO I-IAC 23 RADAR			
IM	2200	4000	5000	6000	7000	8000	9000
273°	273°	273°	273°	273°	273°	273°	273°
1040'	4.7 NM	5.9 NM	3.1 NM	3.1 NM	3.1 NM	3.1 NM	3.1 NM
CATEGORY	A	B	C	D			
S-ILS 27L	RA 164/14 150 DA 804						

SA CATEGORY I ILS - SPECIAL AIRCREW & AIRCRAFT CERTIFICATION REQUIRED

EC-3, 15 JUL 2021 to 12 AUG 2021

EC-3, 15 JUL 2021 to 12 AUG 2021