

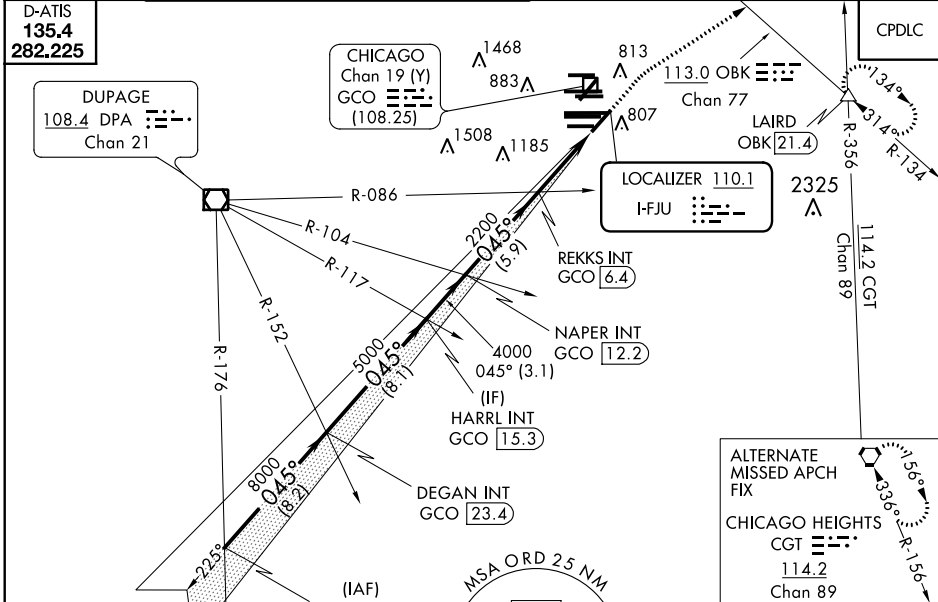
LOC I-FJU 110.1	APP CRS 045°	Rwy ldg TDZE Apt Elev	8075 661 680
---------------------------	------------------------	-----------------------------	---

ILS RWY 4R (SA CAT I & II)

CHICAGO O'HARE INTL (ORD)

RADAR required for procedure entry.		MALSR	MISSED APPROACH: Climb to 1200 then climbing right turn to 4000 on heading 060° and OBK VOR/DME R-134 to LAIRD INT/OBK 21.4 DME and hold.
Simultaneous approach authorized. SA CAT I: Requires specific OPSPEC, MSPEC, or LOA approval and use of HUD to DH. SA CAT II: Reduced lighting: Requires specific OPSPEC, MSPEC, or LOA approval and use of autoland or HUD to touchdown.			

CHICAGO APP CON 119.0 292.125	O'HARE TOWERS 128.15 348.0 (Rwy 9L/27R) 120.75 121.15 126.9 132.7 348.0 (CENTER)	GND CON (TWR NORTH) 124.125 118.05	(TWR CENTER) 121.75 (OBND) 121.9 (IBND)	CLNC DEL 121.6
---	--	--	---	--------------------------



RAHNN INT GCO [31.6]	DEGAN INT GCO [23.4]	HARRL INT GCO [15.3]	NAPER INT GCO [12.2]	REKKS INT GCO [6.4]	LAIRD
VGSI and ILS glidepath not coincident (VGSI Angle 3.00/TCH 67).					
1200 4000 OBK R-134 LAIRD					
GS 3.00° TCH 52					
11000 8000 045° 5000 4000 2200 2128					
8.2 NM 8.1 NM 3.1 NM 5.9 NM 4.4 NM 1049'					

ELEV 680	TDZE 661
----------	----------

This block contains a detailed diagram of the ILS RWY 4R approach, including:

- Localizer (LOC 110.1):** A line of 1.0° width centered on the runway axis.
- Glide Path (GS 045°):** A 045° glide path with a 3.00° TCH of 52 feet.
- Obstacle Clearance (OC):** Various OC values are shown along the path, such as 11000, 8000, 5000, 4000, and 2200.
- Navigation Aids:** Includes the LAIRD VOR (114.2 CGT) and OBK 21.4 DME.
- Obstacles:** Numerous obstacles are marked with their MSL and AGL altitudes, such as 1468, 883, 813, 807, 1508, 1185, 2325, 1142, and 336.
- Intersecting Runways:** R-086, R-104, R-117, R-152, R-176, R-356, R-134, and R-156 are shown.
- Communication:** Frequencies for CHICAGO (119.0), DUPAGE (108.4), and various tower frequencies are provided.
- MSA:** A Minimum Safe Altitude (MSA) circle is shown with a 25 NM radius and a 3400 MSL ceiling.

CATEGORY	A	B	C	D
S-ILS 4R	SA CAT I	RA 160/16	150 DA 811	
S-ILS 4R	SA CAT II	RA 111/12	100 DA 761	

SA CATEGORY I & II ILS - SPECIAL AIRCREW & AIRCRAFT CERTIFICATION REQUIRED

EC-3, 15 JUL 2021 to 12 AUG 2021

EC-3, 15 JUL 2021 to 12 AUG 2021