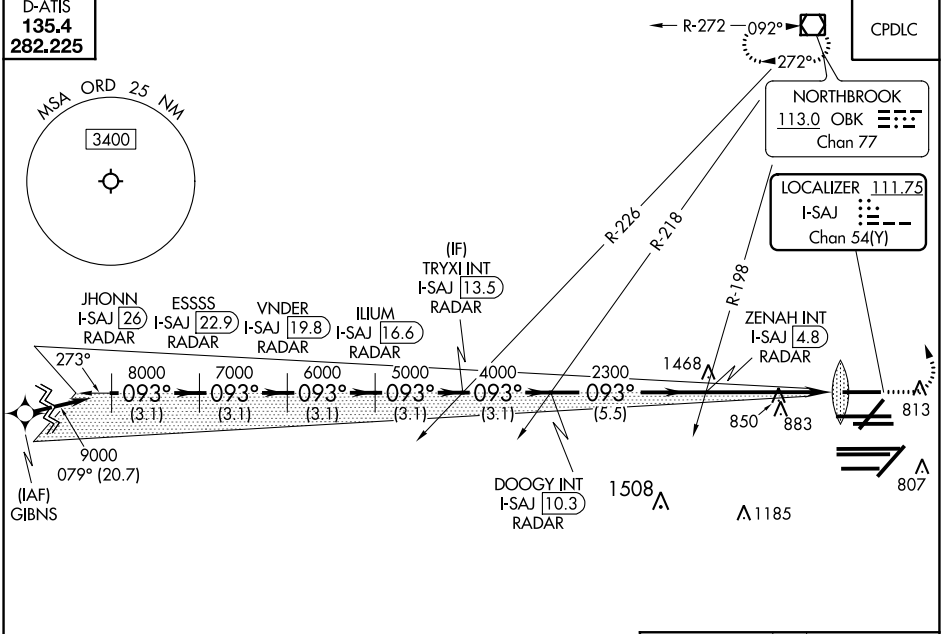


LOC/DME I-SAJ 111.75 Chan 54 (Y)	APP CRS 093°	Rwy Idg 7500 TDZE 668 Apt Elev 680
--	------------------------	---

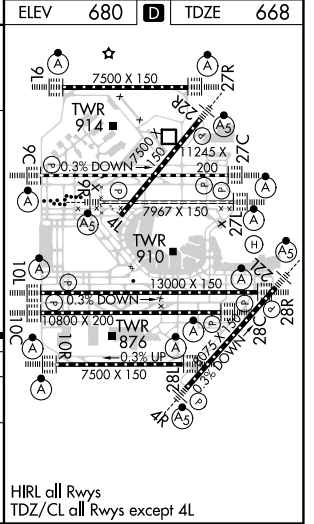
ILS RWY 9L (SA CAT I)

CHICAGO O'HARE INTL (ORD)

RNAV-1 GPS or RADAR required for procedure entry. RADAR or DME required.	ALSF-2 	MISSED APPROACH: Climb to 1100 then climbing left turn to 4000 direct OBK VOR/DME and hold, continue climb-in-hold to 4000.	
CHICAGO APP CON 119.0 292.125	O'HARE TOWERS 128.15 348.0 (Rwy 9L/27R) 133.0 348.0 (10R/28L) 120.75 121.15 126.9 132.7 348.0 (CENTER)	GND CON (TWR CENTER) 121.75 (OBND) 121.9 (IBND)	CLNC DEL 121.6
D-ATIS 135.4 282.225			CPDLC



JHONN I-SAJ (26) RADAR	VNDER I-SAJ (19.8) RADAR	TRYXI INT I-SAJ (13.5) RADAR	ZENAH INT I-SAJ (4.8) RADAR	1100	4000	OBK
ESSSS I-SAJ (22.9) RADAR	ILIUM I-SAJ (16.6) RADAR	DOOGY INT I-SAJ (10.3) RADAR	I-SAJ DME ANTENNA			
3.1 NM	3.1 NM	3.1 NM	3.1 NM	3.1 NM	5.5 NM	5 NM
CATEGORY A		CATEGORY B		CATEGORY C		
S-ILS 9L		RA 144/14		150 DA 818		
SA CATEGORY I ILS - SPECIAL AIRCREW & AIRCRAFT CERTIFICATION REQUIRED						



EC-3, 15 JUL 2021 to 12 AUG 2021

EC-3, 15 JUL 2021 to 12 AUG 2021