

LOC/DME I-SXH 108.95 Chan 26(Y)	APP CRS 093°	Rwy Idg TDZE Apt Elev	10540 669 680
--	------------------------	-----------------------------	--

ILS or LOC RWY 10C

CHICAGO O'HARE INTL (ORD)

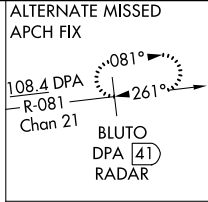
From GIBNS: RNAV-1 GPS required. ALSF-2 MISSED APPROACH: Climb to 4000 on heading 093° and CGT VORTAC R-336 to CGT VORTAC and hold.

RNAV 1-GPS or RADAR required for procedure entry. DME or RADAR required.

Simultaneous approach authorized.

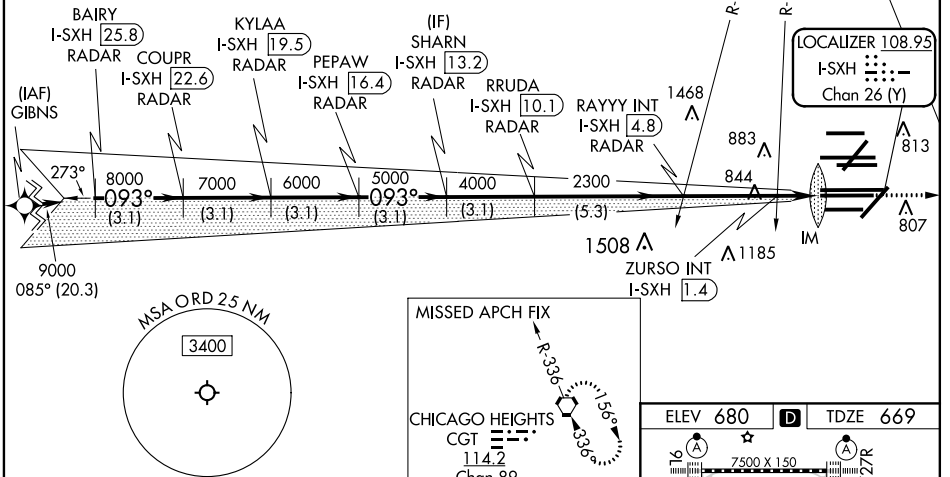
CHICAGO APP CON 119.0 292.125	O'HARE TOWERS Rwy 9L/27R 128.15 348.0 133.0 348.0 (110R/28L) 120.75 121.15 126.9 132.7 348.0 (CENTER)	GND CON (TWR NORTH) 124.125 (TWR SOUTH) 118.05 (ALL TWRs) 226.675	(TWR CENTER) 121.75 (OBND) 121.9 (IBND)	CLNC DEL 121.6
---	--	---	---	--------------------------

D-ATIS
135.4
282.225

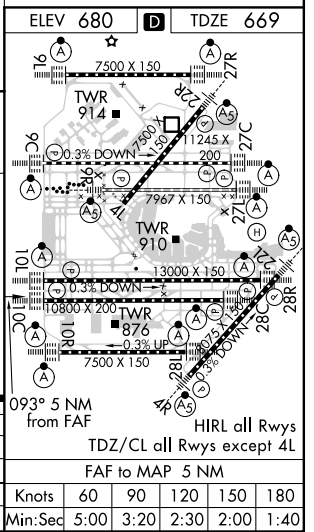


NORTHBROOK
113.0 OBK
Chan 77

CPDLC



BAIRY I-SXH (25.8) RADAR	VGSi and ILS glidepath not coincident KYLAA (VGSi Angle 3.00/TCH 75).	4000	hdg 093°	CGT R-336	CGT
COUPR I-SXH (22.6) RADAR	SHARN I-SXH (13.2) RADAR	RAYYY INT I-SXH (4.8) RADAR	* LOC only		
PEPAW I-SXH (16.4) RADAR	RRUDA I-SXH (10.1) RADAR	ZURSO INT I-SXH (1.4) RADAR	I-SXH DME ANTENNA		
GS 3.00° TCH 55			IM	IM	
3.1 NM	3.1 NM	3.1 NM	3.1 NM	3.1 NM	5.3 NM
CATEGORY A			CATEGORY B		
S-ILS 10C			869/18 200 (200-½)		
S-LOC 10C			1220/24 551 (600-½) 1220/60 551 (600-1¼)		
ZURSO FIX MINIMUMS (DUAL VOR RECEIVERS OR DME REQUIRED)					
S-LOC 10C			1100/24 431 (500-½) 1100/40 431 (500-¾)		



EC-3, 15 JUL 2021 to 12 AUG 2021

EC-3, 15 JUL 2021 to 12 AUG 2021