

LOC/DME I-MED 111.1 Chan 48	APP CRS 093°	Rwy Ldg TDZE 672 Apt Elev 680	12246
---	------------------------	---	--------------

ILS or LOC RWY 10L

CHICAGO O'HARE INTL (ORD)

From GIBNS: RNAV-1 GPS required. ALSF-2 (A) MISSED APPROACH: Climb to 4000 on heading 093° and CGT VORTAC R-336 to CGT VORTAC and hold.

RNAV 1-GPS or RADAR required for procedure entry. DME or RADAR required.

Simultaneous approach authorized.

CHICAGO APP CON 119.0 292.125	O'HARE TOWERS 128.15 348.0 (Rwy 9L/27R) 133.0 348.0 (10R/28L) 120.75 121.5 126.9 132.7 348.0 (CENTER)	GND CON (TWR CENTER) 124.125 (TWR NORTH) 118.05 (TWR SOUTH) 226.675 (ALL TWRs)	(TWR CENTER) 121.75 (OBND) 121.9 (IBND)	CLNC DEL 121.6
---	---	--	---	--------------------------

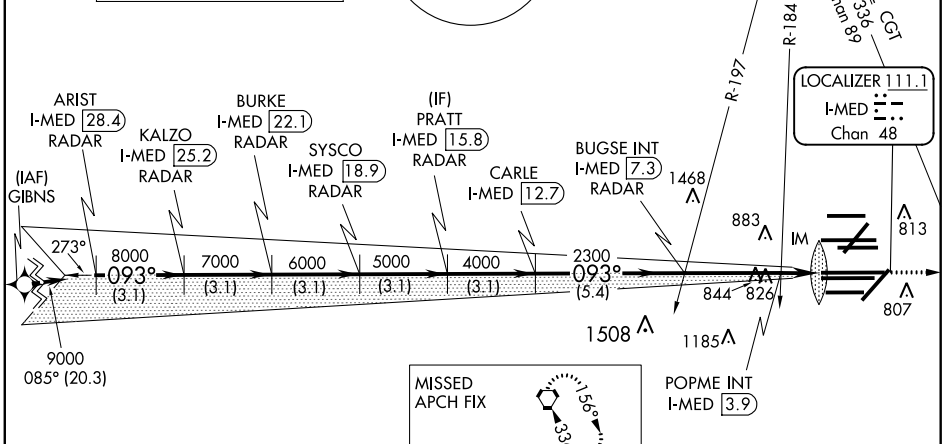
D-ATIS **135.4**
282.225

ALTERNATE MISSED APCH FIX

MSA ORD 2.5 NM
3400

NORTHBROOK
113.0 OBK
Chan 77

CPDLC



MISSED APCH FIX

CHICAGO HEIGHTS
CGT
114.2 Chan 89

VGSI and ILS glidepath not coincident (VGSI Angle 3.00/TCH 74).

ARIST I-MED [28.4] RADAR	BURKE I-MED [22.1] RADAR	PRATT I-MED [15.8] RADAR	BUGSE INT I-MED [7.3]	CGT R-336	CGT
KALZO I-MED [25.2] RADAR	SYSCO I-MED [18.9] RADAR	CARLE I-MED [12.7]	POPME INT I-MED [3.9]	*LOC only.	
9000	8000	7000	6000	5000	4000
3.1 NM	3.1 NM	3.1 NM	3.1 NM	3.1 NM	5.4 NM
GS 3.00° TCH 56			2300	*1200	I-MED [2.4]
CATEGORY A			CATEGORY B		CATEGORY C

ELEV 680 TDZE 672

TWR 914, TWR 910, TWR 876

0.3% DOWN, 0.3% UP, 0.3% DOWN

10800 X 200, 7500 X 150, 13000 X 150, 7500 X 150

093° 4.9 NM from FAF

HIRL all Rwy's except 4L

TDZ/CL all Rwy's except 4L

FAF to MAP 4.9 NM

Knots	60	90	120	150	180
Min:Sec	4:54	3:16	2:27	1:58	1:38

S-ILS 10L	872/18		200 (200-½)	
S-LOC 10L	1200/24	528 (600-½)	1200/55	528 (600-1)
POPME FIX MINIMUMS (DUAL VOR RECEIVERS OR DME REQUIRED)				
S-LOC 10L	1080/24	408 (400-½)	1080/40	408 (400-¾)

EC-3, 15 JUL 2021 to 12 AUG 2021

EC-3, 15 JUL 2021 to 12 AUG 2021