

LOC I-LQQ	APP CRS	Rwy ldg TDZE	8075 654
110.1	225°	Apt Elev	680

ILS or LOC RWY 22L

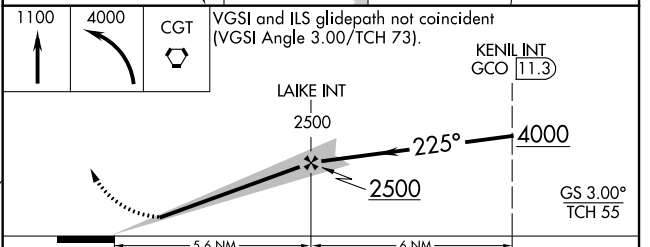
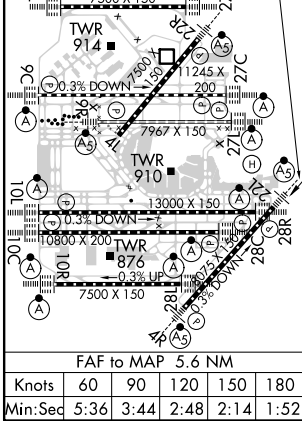
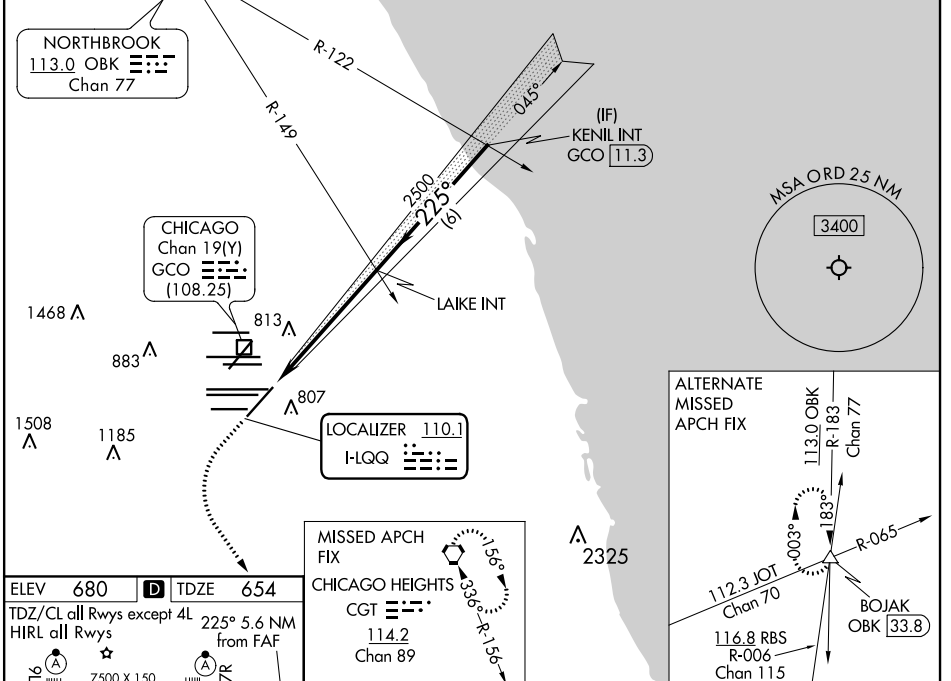
CHICAGO O'HARE INTL (ORD)

RADAR required for procedure entry.		MALSR	MISSED APPROACH: Climb to 1100 then climbing left turn to 4000 direct CGT VORTAC and hold.
Simultaneous approach authorized.			

CHICAGO APP CON	O'HARE TOWERS	GND CON	(TWR CENTER)	CLNC DEL
119.0 292.125	128.15 348.0 (Rwy 9L/27R) 133.0 348.0 (110R/28L) 126.9 121.15 126.9 132.7 348.0 (CENTER)	124.125 (TWR NORTH) 118.05 (TWR SOUTH) 226.675 (ALL TWRS)	121.75 (OBND) 121.9 (IBND)	121.6

D-ATIS
135.4
282.225

CPDLC



CATEGORY	A	B	C	D
S-ILS 22L	854/18		200 (200-1/2)	
S-LOC 22L	1120/24	466 (500-1/2)	1120/50	466 (500-1)
CIRCLING	1220-1	540 (600-1)	1220-1 1/2 540 (600-1 1/2)	1460-2 1/2 780 (800-2 1/2)

EC-3, 15 JUL 2021 to 12 AUG 2021

EC-3, 15 JUL 2021 to 12 AUG 2021