

LOC/DME I-UYJ 111.9 Chan 56	APP CRS 273°	Rwy ldg 11245 TDZE 653 Apt Elev 680
--	------------------------	--

ILS or LOC RWY 27C

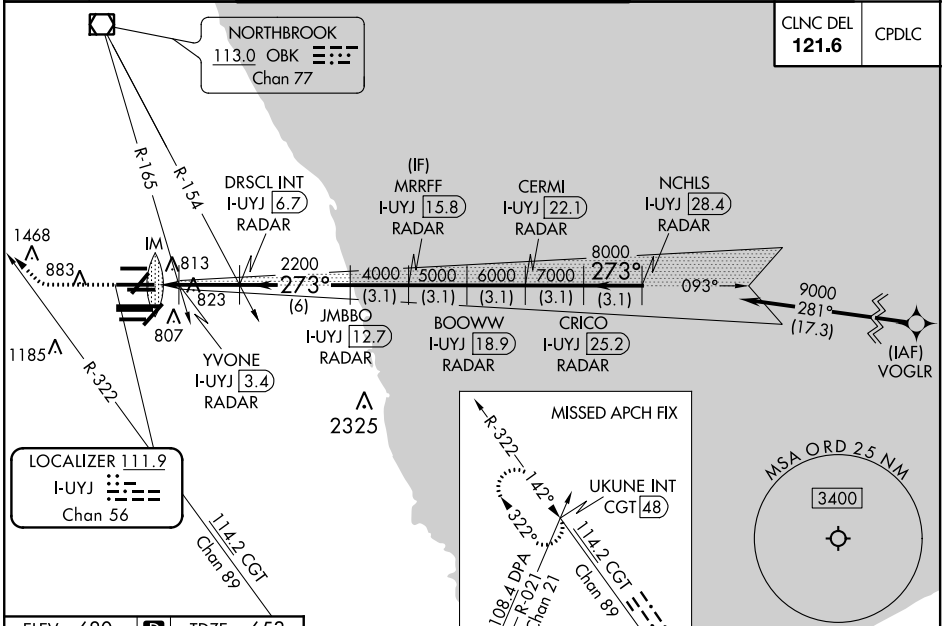
CHICAGO O'HARE INTL (ORD)

From VOGLR: RNAV 1-GPS required. Aircraft not GPS equipped - RADAR required for procedure entry. DME or RADAR required.

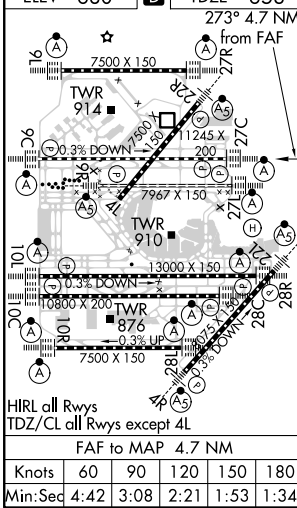
ALSF-2
MISSED APPROACH: Climb to 1100 then climbing right turn to 4000 on heading 290° and CGT R-322 to UKUNE INT/ CGT 48 DME and hold.

Simultaneous approach authorized. For inop ALS, increase S-LOC 27C Cat C/D visibility to 1½ SM.

D-ATIS 135.4 282.225	CHICAGO APP CON 119.0 292.125	O'HARE TOWERS 128.15 348.0 (Rwy 9L/27R) 133.0 348.0 (10R/28L) 120.75 121.15 126.9 132.7 348.0 (CENTER)	GND CON (TWR CENTER) 124.125 (TWR NORTH) 121.75 (OBND) 118.05 (TWR SOUTH) 121.9 (IBND) 226.675 (ALL TWRs)
--	---	--	--



ELEV 680	TDZE 653
----------	----------



1100	4000	CGT R-322	UKUNE INT	VGSI and ILS glidepath not coincident (VGSI Angle 3.00/TCH 75).	NCHLS I-UYJ 28.4 RADAR		
*LOC only.				CERMI I-UYJ 22.1 RADAR	CRICO I-UYJ 25.2 RADAR		
				JMBBO I-UYJ 12.7 RADAR	BOOWW I-UYJ 18.9 RADAR		
				MRRFF I-UYJ 15.8 RADAR	YVONE I-UYJ 3.4 RADAR		
				DRSCL INT I-UYJ 6.7 RADAR	IM 807		
CATEGORY				A	B	C	D
S-ILS 27C				853/18 200 (200-½)			
S-LOC 27C				1160/24 507 (500-½)		1160/55 507 (500-1)	
YVONE FIX MINIMUMS (DUAL VOR RECEIVERS or DME REQUIRED)							
S-LOC 27C				1080/24 427 (400-½)		1080/40 427 (400-¾)	

EC-3, 15 JUL 2021 to 12 AUG 2021

EC-3, 15 JUL 2021 to 12 AUG 2021