

LOC/DME I-AIC 110.5 Chan 42	APP CRS 273°	Rwy ldg 7782 TDZE 654 Apt Elev 680
---	------------------------	--

ILS or LOC RWY 27L

CHICAGO O'HARE INTL (ORD)

From VOGLR: RNAV 1-GPS required. Aircraft not GPS equipped - RADAR required for procedure entry. DME or RADAR required.

ALSF-2

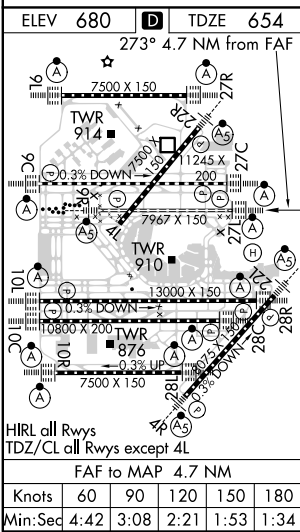
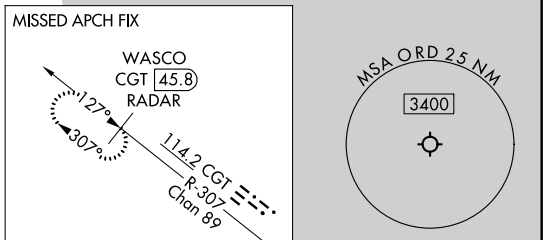
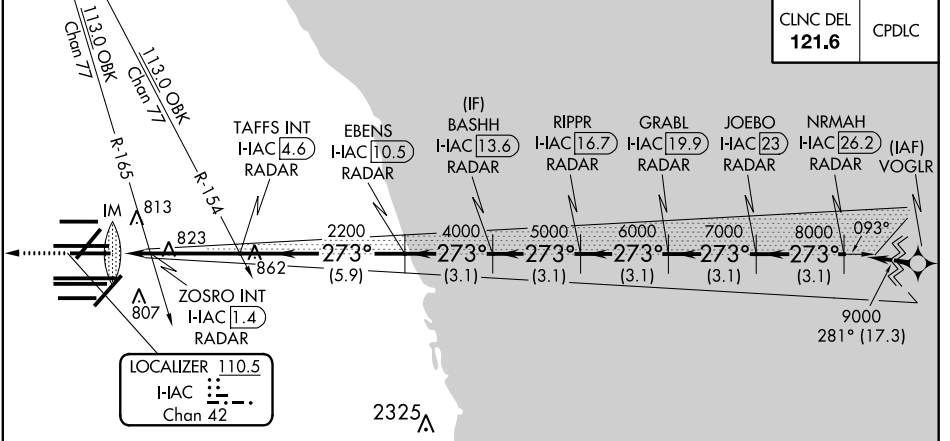
MISSED APPROACH: Climb to 1200 then climb to 4000 on heading 265° and on CGT VORTAC R-307 to WASCO/CGT 45.8 DME/RADAR and hold.

Simultaneous approach authorized.



D-ATIS 135.4 282.225	CHICAGO APP CON 119.0 292.125	O'HARE TOWERS 128.15 348.0 (Rwy 9L/27R) 133.0 348.0 (10R/28L) 120.75 121.15 126.9 132.7 348.0 (CENTER)	CND CON (TWR CENTER) 124.125 (TWR NORTH) 121.75 (OBND) 118.05 (TWR SOUTH) 121.9 (IBND) 226.675 (ALL TWRS)
--	---	--	---

CLNC DEL 121.6	CPDLC
--------------------------	-------



ELEV 680	TDZE 654	273° 4.7 NM from FAF	
*LOC only		TAFFS INT I-HAC 4.6	EBENS I-HAC 10.5
I-HAC DME ANTENNA	ZOSRO INT I-HAC 1.4	BASHH I-HAC 13.6	RIPPR I-HAC 16.7
I-HAC 0.1	ZOSRO INT I-HAC 1.4	GRABL I-HAC 19.9	JOEBO I-HAC 23
IM 813	ZOSRO INT I-HAC 1.4	NRMAH I-HAC 26.2	
IM 823	ZOSRO INT I-HAC 1.4		
IM 862	ZOSRO INT I-HAC 1.4		
IM 807	ZOSRO INT I-HAC 1.4		
LOCALIZER 110.5	ZOSRO INT I-HAC 1.4		
WASCO CGT 45.8	ZOSRO INT I-HAC 1.4		
MSA ORD 2.5 NM	ZOSRO INT I-HAC 1.4		
CGT R-307	ZOSRO INT I-HAC 1.4		
WASCO CGT 45.8	ZOSRO INT I-HAC 1.4		
VGSI and ILS glidepath not coincident (VGSI Angle 3.00/TCH 67).	ZOSRO INT I-HAC 1.4		
BASHH I-HAC 13.6	ZOSRO INT I-HAC 1.4		
RIPPR I-HAC 16.7	ZOSRO INT I-HAC 1.4		
GRABL I-HAC 19.9	ZOSRO INT I-HAC 1.4		
JOEBO I-HAC 23	ZOSRO INT I-HAC 1.4		
NRMAH I-HAC 26.2	ZOSRO INT I-HAC 1.4		
9000	ZOSRO INT I-HAC 1.4		
8000	ZOSRO INT I-HAC 1.4		
7000	ZOSRO INT I-HAC 1.4		
6000	ZOSRO INT I-HAC 1.4		
5000	ZOSRO INT I-HAC 1.4		
4000	ZOSRO INT I-HAC 1.4		
2200	ZOSRO INT I-HAC 1.4		
1160*	ZOSRO INT I-HAC 1.4		
0.1	ZOSRO INT I-HAC 1.4		
0.1	ZOSRO INT I-HAC 1.4		
1.4	ZOSRO INT I-HAC 1.4		
3.2 NM	ZOSRO INT I-HAC 1.4		
5.9 NM	ZOSRO INT I-HAC 1.4		
3.1 NM	ZOSRO INT I-HAC 1.4		
3.1 NM	ZOSRO INT I-HAC 1.4		
3.1 NM	ZOSRO INT I-HAC 1.4		
3.1 NM	ZOSRO INT I-HAC 1.4		
3.1 NM	ZOSRO INT I-HAC 1.4		
3.1 NM	ZOSRO INT I-HAC 1.4		
CATEGORY	A	B	C
S-ILS 27L	854/18 200 (200-1/2)		
S-LOC 27L	1160/24	506 (500-1/2)	1160/55 506 (500-1)
ZOSRO FIX MINIMUMS (DUAL VOR RECEIVERS OR DME REQUIRED)			
S-LOC 27L	1080/24	426 (400-1/2)	1080/40 426 (400-3/4)

EC-3, 15 JUL 2021 to 12 AUG 2021

EC-3, 15 JUL 2021 to 12 AUG 2021