

LOC/DME I-VZE <b>108.95</b> Chan 26 (Y)	APP CRS <b>273°</b>	Rwy ldg <b>10800</b> TDZE <b>651</b> Apt Elev <b>680</b>
---	------------------------	--

# ILS or LOC RWY 28C

CHICAGO O'HARE INTL (ORD)

From VOGLR: RNAV 1-GPS required.  
Aircraft not GPS equipped - RADAR required for procedure entry.  
DME or RADAR required.

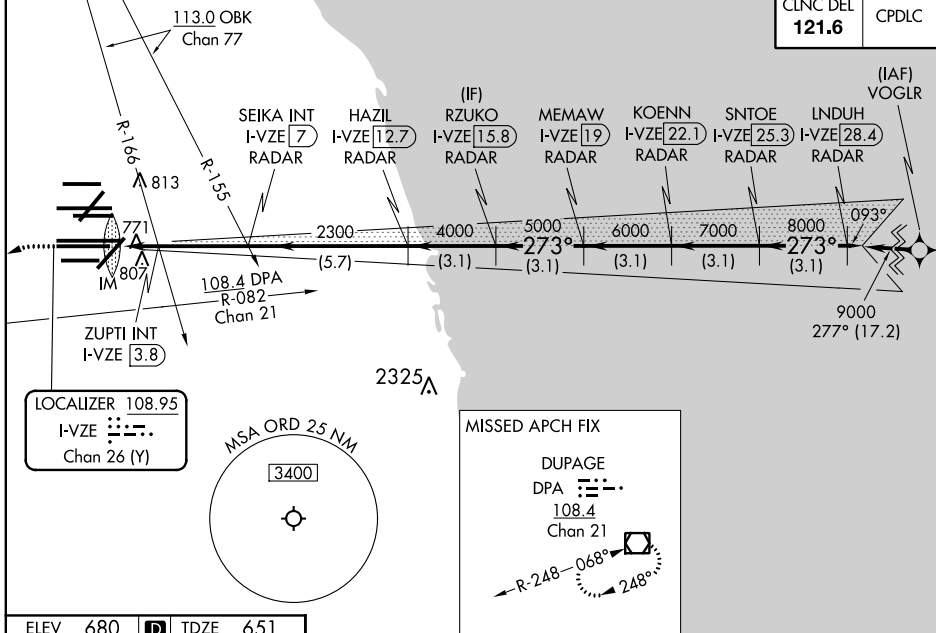


MISSED APPROACH: Climb to 1100 then climbing left turn to 4000 on heading 215° and DPA VOR/DME R-082 to DPA VOR/DME and hold.

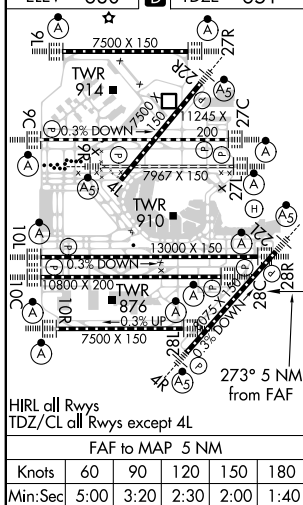
Simultaneous approach authorized.

D-ATIS <b>135.4</b> <b>282.225</b>	CHICAGO APP CON <b>119.0 292.125</b>	O'HARE TOWERS <b>128.15 348.0</b> (Rwy 9L/27R) <b>133.0 348.0</b> (10R/28L) <b>120.75 121.15 126.9 132.7 348.0</b> (CENTER)	GND CON (TWR CENTER) <b>121.75</b> (OBND) (TWR NORTH) <b>121.9</b> (IBND) (TWR SOUTH) <b>226.675</b> (ALL TWRs)
--	---	--	--

CLNC DEL <b>121.6</b>	CPDLC
--------------------------	-------



ELEV <b>680</b>	<b>D</b>	TDZE <b>651</b>
-----------------	----------	-----------------



1100	4000	DPA R-082	DPA	RZUKO I-VZE 15.8 RADAR	KOENN I-VZE 22.1 RADAR	LNDUH I-VZE 28.4 RADAR
*LOC only.						
I-VZE 2	ZUPTI INT I-VZE 3.8	SEIKA INT I-VZE 7 RADAR	HAZIL I-VZE 12.7 RADAR	MEMAW I-VZE 19 RADAR	SNTOE I-VZE 25.3 RADAR	273° 9000
IM	*I-VZE 2.9	2300	4000	5000	6000	7000
0.1	0.9	0.8	-3.2 NM	5.7 NM	3.1 NM	3.1 NM
CATEGORY A B C D						
S-ILS 28C 851/18 200 (200-½)						
S-LOC 28C 1200/24 549 (600-½) 1200/60 549 (600-1¼)						
ZUPTI FIX MINIMUMS (DUAL VOR RECEIVERS OR DME REQUIRED)						
S-LOC 28C 1040/24 389 (400-½) 1040/35 389 (400-¾)						

VGS1 and ILS glidepath not coincident (VGS1 Angle 3.00/TCH 80).  
GS 3.00° TCH 55

EC-3, 15 JUL 2021 to 12 AUG 2021

EC-3, 15 JUL 2021 to 12 AUG 2021