

LOC/DME I-VQX 110.75 Chan 44(Y)	APP CRS 274°	Rwy ldg TDZE Apt Elev	7500 667 680
--	------------------------	-----------------------------	---

ILS or LOC RWY 28L

CHICAGO O'HARE INTL (ORD)

Aircraft not GPS equipped - RADAR required for procedure entry. DME or RADAR required.
From VOGLR: RNAV 1-GPS required.

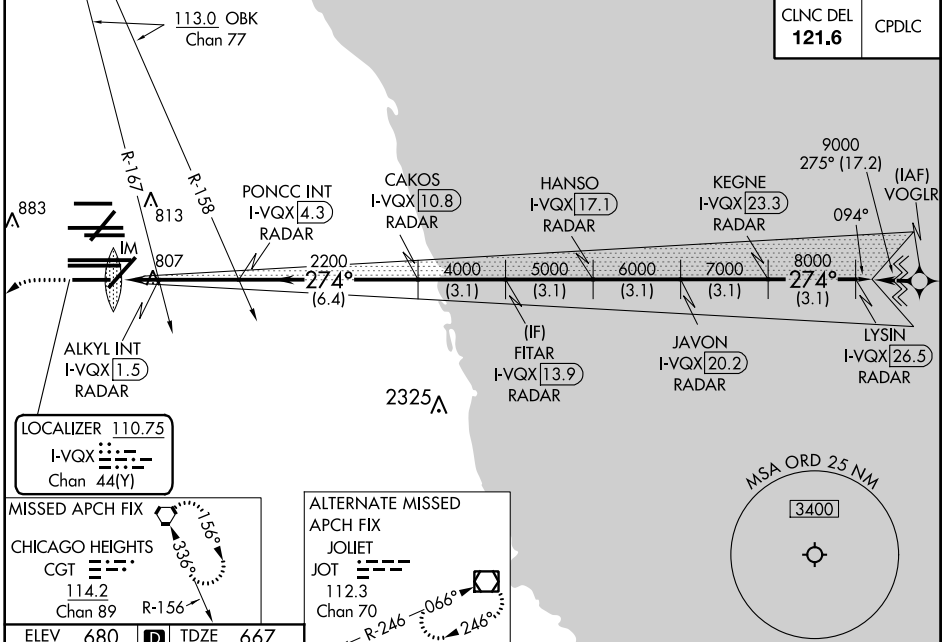
ALSF-2

MISSED APPROACH: Climb to 1200 then climbing left turn to 4000 direct CGT VORTAC and hold.

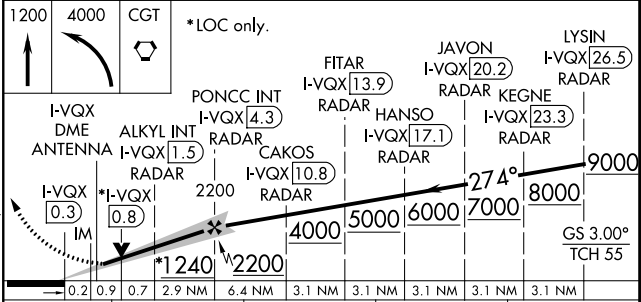
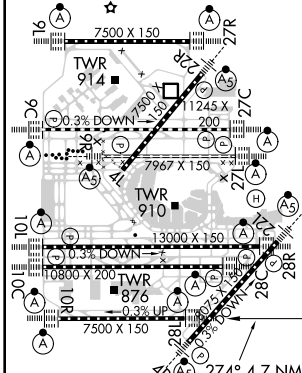
Simultaneous approach authorized.

D-ATIS 135.4 282.225	CHICAGO APP CON 119.0 292.125	O'HARE TOWERS 128.15 348.0 (Rwy 9L/27R) 133.0 348.0 (10R/28L) 120.75 121.15 126.9 132.7 348.0 (CENTER)	GND CON (TWR CENTER) 124.125 (TWR NORTH) 121.75 (OBND) 118.05 (TWR SOUTH) 121.9 (IBND) 226.675 (ALL TWSR)
--	---	--	--

CNLC DEL 121.6	CPDLC
--------------------------	-------



ELEV 680	D	TDZE 667
----------	---	----------



HIRL all Rwy's TDZ/CL all Rwy's except 4L	FAF to MAP 4.7 NM
Knots	60 90 120 150 180
Min:Sec	4:42 3:08 2:21 1:53 1:34
S-ILS 28L	867/18 200 (200-½)
S-LOC 28L	1240/24 573 (600-½) 1240-1/4 573 (600-1/4)
S-LOC 28L	1060/24 393 (400-½) 1060/35 393 (400-5/8)

EC-3, 15 JUL 2021 to 12 AUG 2021

EC-3, 15 JUL 2021 to 12 AUG 2021