

LOC/DME I-OYG 111.9 Chan 56	APP CRS 093°	Rwy Idg 11245 TDZE 673 Apt Elev 680
---	------------------------	--

ILS or LOC RWY 9C

CHICAGO O'HARE INTL (ORD)

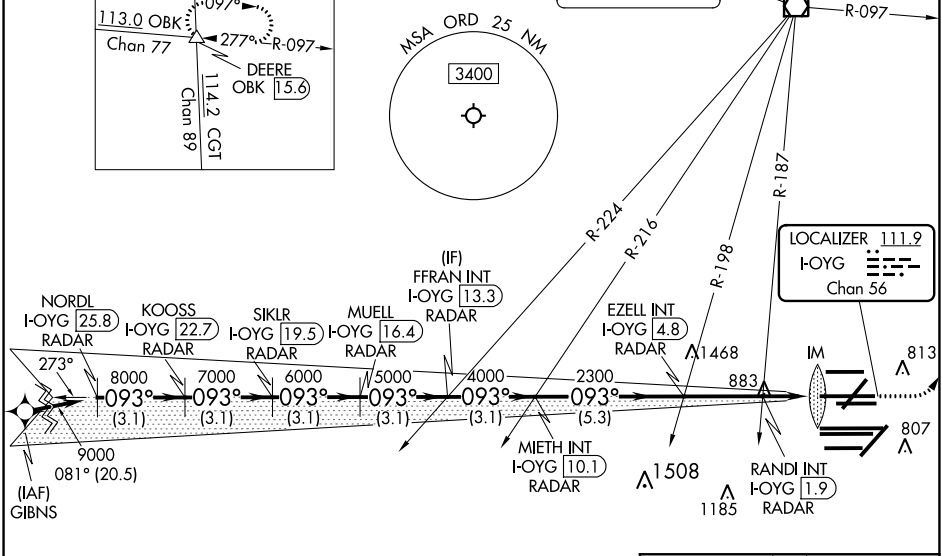
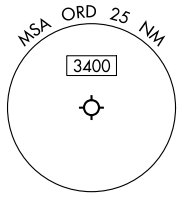
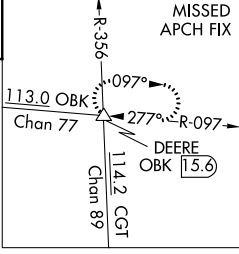
DME or RADAR required. From GIBNS: RNAV 1-GPS required. Aircraft not GPS equipped - RADAR required for procedure entry.

ALSF-2 MISSED APPROACH: Climb to 1200 then climbing left turn to 4000 on heading 037° and OBK VOR/DME R-097 to DEERE INT/OBK 15.6 DME and hold.

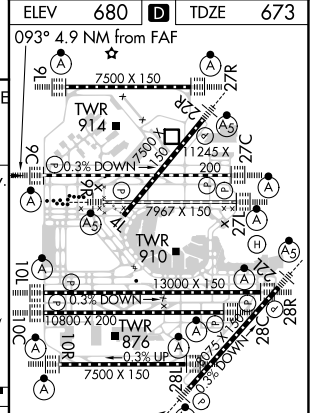
Simultaneous approach authorized. For inop ALS, increase S-LOC 9C Cat C/D visibility to 1½ SM.

CHICAGO APP CON 119.0 292.125	O'HARE TOWERS 128.15 348.0 (Rwy 9L/27R) 133.0 348.0 (110R/28L) 126.9 348.0 (CENTER)	GND CON (TWR NORTH) 124.125 (TWR SOUTH) 118.05 (ALL TWRS) 226.675	(TWR CENTER) 121.75 (OBND) 121.9 (IBND)	CLNC DEL 121.6
---	---	--	---	--------------------------

D-ATIS 135.4 282.225	MISSED APCH FIX	NORTHBROOK 113.0 OBK Chan 77	CPDLC
--	-----------------	------------------------------------	-------



NORDL I-OYG 25.8 RADAR	KOOSS I-OYG 22.7 RADAR	SIKLR I-OYG 19.5 RADAR	MUELL I-OYG 16.4 RADAR	FFRAN INT I-OYG 13.3 RADAR	EZZEL INT I-OYG 4.8 RADAR	MIETH INT I-OYG 10.1 RADAR	RANDI INT I-OYG 1.9 RADAR	DEERE I-OYG 1.2	OBK 15.6
3.1 NM	3.1 NM	3.1 NM	3.1 NM	3.1 NM	5.3 NM	2.9 NM	0.8 NM	1.1 NM	0.1 NM



CATEGORY	A	B	C	D
S-ILS 9C	873/18 200 (200-½)			
S-LOC 9C	1140/24	467 (500-½)	1140/50	467 (500-1)

ELEV 680	TDZE 673
093° 4.9 NM from FAF	
HIRL all Rwys	
TDZ/CL all Rwys except 4L	
FAF to MAP 4.9 NM	
Knots	60 90 120 150 180
Min:Sec	4:54 3:16 2:27 1:58 1:38

EC-3, 15 JUL 2021 to 12 AUG 2021

EC-3, 15 JUL 2021 to 12 AUG 2021