

# ILS PRM RWY 10C (SA CAT I) (CLOSE PARALLEL)

CHICAGO O'HARE INTL (ORD)

LOC/DME I-SXH	APP CRS	Rwy Ldg	10540
108.95	093°	TDZE	669
Chan 26(Y)		Apt Elev	680

RNAV 1-GPS or RADAR required for procedure entry. DME or RADAR required.  
 From GIBNS: RNAV-1 GPS required.

Requires specific OPSPEC, MSPEC, or LOA approval and use of HUD to DH. Simultaneous approach authorized. Use of FD or AP required during simultaneous operations. Dual VHF comm required. See additional requirements on AAUP.

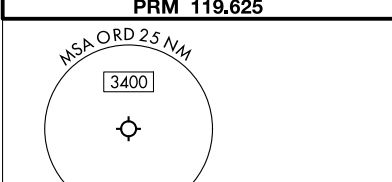
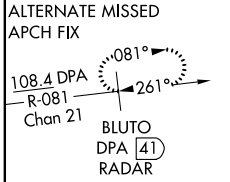


MISSED APPROACH: Climb to 4000 on heading 093° and CGT VORTAC R-336 to CGT VORTAC and hold.

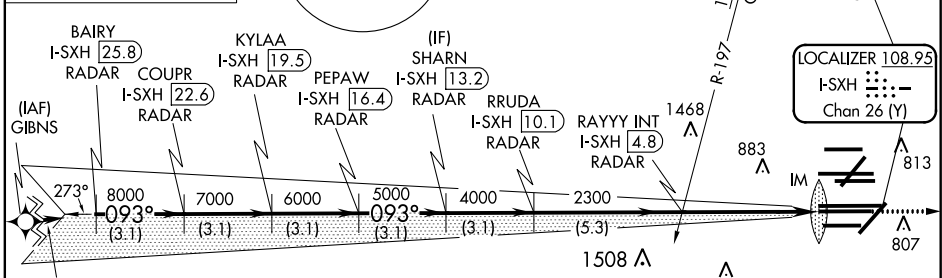
D-ATIS	CHICAGO APP CON
135.4	282.225
	119.0 292.125

O'HARE TOWERS			
128.15	348.0	133.0	348.0 (10R/28L)
120.75	121.15	126.9	132.7 348.0 (CENTER)
PRM 119.625			

124.125 (TWR NORTH)	121.75 (TWR CENTER)
118.05 (TWR SOUTH)	121.9 (TWR INBD)
226.675 (ALL TWR)	

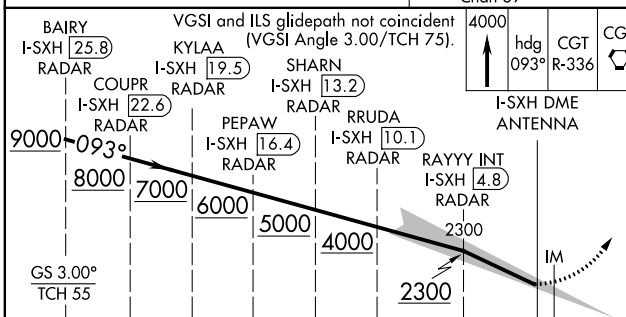


CNLC DEL	CPDLC
121.6	



EC-3, 15 JUL 2021 to 12 AUG 2021

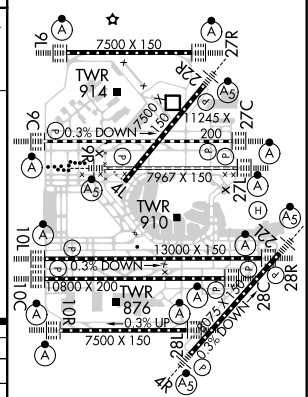
EC-3, 15 JUL 2021 to 12 AUG 2021



3.1 NM	3.1 NM	3.1 NM	3.1 NM	3.1 NM	5.3 NM	5 NM	1091'
A		B			C	D	
S-ILS 10C RA 148/14 150 DA 819							

**SA CATEGORY I ILS - SPECIAL AIRCREW & AIRCRAFT CERTIFICATION REQUIRED**

ELEV 680	TDZE 669
----------	----------



HIRL all Rws  
 TDZ/CL all Rws except 4L