

ILS PRM RWY 28C

(CLOSE PARALLEL)

CHICAGO O'HARE INTL (ORD)

LOC/DME I-VZE 108.95 Chan 26 (Y)	APP CRS 273°	Rwy Idg 10800 TDZE 651 Apt Elev 680
--	------------------------	--

Aircraft not GPS equipped - RADAR required for procedure entry. DME or RADAR required. From VOGLR: RNAV 1-GPS required.

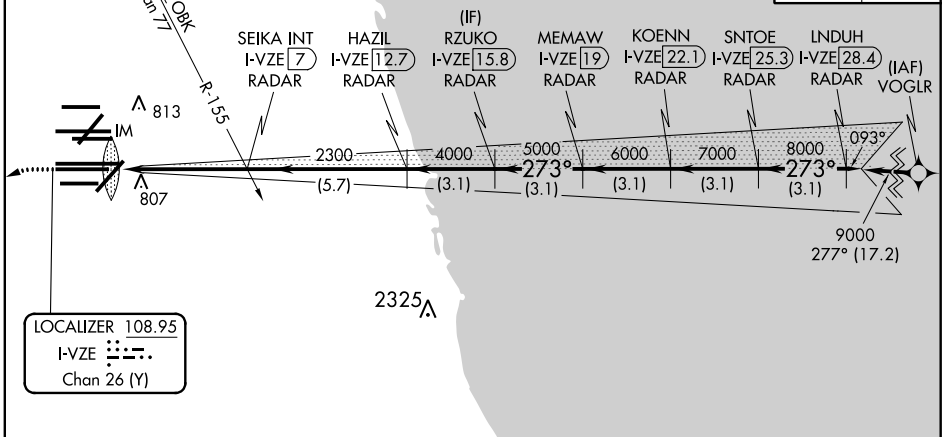
ALSIF-2

MISSED APPROACH: Climb to 1100 then climbing left turn to 4000 on heading 215° and DPA VOR/DME R-082 to DPA VOR/DME and hold.

Simultaneous approach authorized. Use of FD or AP required during simultaneous operations. Dual VHF comm required. See additional requirements on AAUP.

D-ATIS 135.4 282.225	CHICAGO APP CON 119.0 292.125	O'HARE TOWERS 128.15 348.0 (Rwy 9L/27R) 133.0 348.0 (10R/28L) 120.75 121.15 126.9 132.7 348.0 (CENTER) PRM 119.625	GND CON (TWR CENTER) (TWR NORTH) (TWR SOUTH) (ALL TWRs) 124.125 121.75 121.9 121.9 118.05 121.9 121.9 121.9 226.675 (ALL TWRs)
--	--	---	--

CLNC DEL 121.6	CPDLC
--------------------------	-------



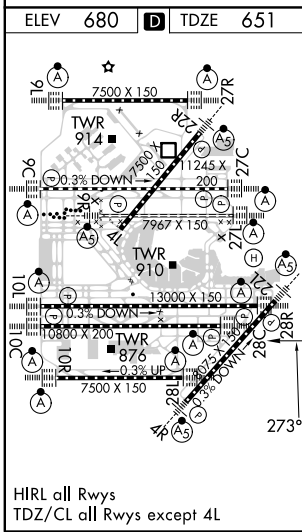
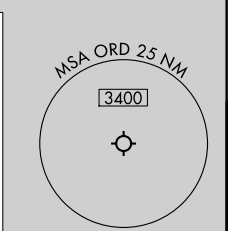
ELEV 680	TDZE 651
-----------------	-----------------

MISSED APCH FIX

DUPAGE

DPA 108.4 Chan 21

R-248-068° 248°



1100	4000	DPA R-082	DPA	RZUKO I-VZE 15.8 RADAR	KOENN I-VZE 22.1 RADAR	LNDUH I-VZE 28.4 RADAR
2300	4000	SEIKA INT I-VZE 7 RADAR	HAZIL I-VZE 12.7 RADAR	MEMAW I-VZE 19 RADAR	SNTOE I-VZE 25.3 RADAR	273° 9000
2300	4000	5000	6000	7000	8000	GS 3.00° TCH 55
VGSI and ILS glidepath not coincident (VGSI Angle 3.00/TCH 80).						
0.1	4.9 NM	5.7 NM	3.1 NM	3.1 NM	3.1 NM	3.1 NM
CATEGORY	A	B	C	D		
S-ILS 28C	851/18 200 (200-1/2)					

ILS PRM RWY 28C (CLOSE PARALLEL)

EC-3, 15 JUL 2021 to 12 AUG 2021

EC-3, 15 JUL 2021 to 12 AUG 2021