

LOC/DME I-BYW 110.9 Chan 46	APP CRS 091°	Rwy Idg 7500	TDZE 680	Apt Elev 680
--	------------------------	-----------------	-------------	-----------------

ILS Y or LOC Y RWY 10R

CHICAGO O'HARE INTL (ORD)

RNAV 1-GPS or RADAR required for procedure entry. DME or RADAR required.
From GIBNS: RNAV-1 GPS required.

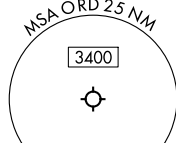
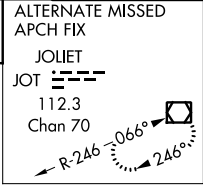
Simultaneous approach authorized.

ALSF-2

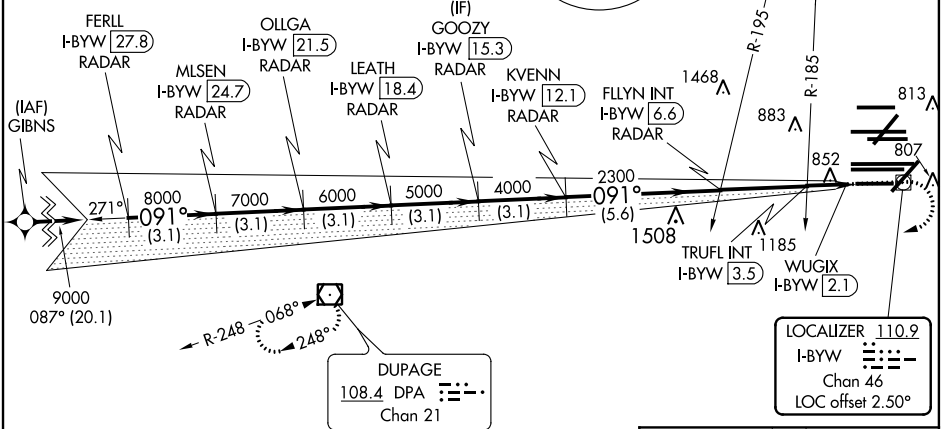
MISSED APPROACH: Climb to 1200 then climbing right turn to 4000 direct DPA VOR/DME and hold.

CHICAGO APP CON 119.0 292.125	O'HARE TOWERS 128.15 348.0 (Rwy 9L/27R) 133.0 348.0 (10R/28L) 126.9 132.7 348.0 (CENTER)	GND CON (TWR CENTER) 124.125 (TWR NORTH) 118.05 (TWR SOUTH) 226.675 (ALL TWS)	(TWR CENTER) 121.75 (OBND) 121.9 (IBND)	CLNC DEL 121.6
---	--	---	---	--------------------------

D-ATIS
135.4
282.225



CPDLC



EC-3, 15 JUL 2021 to 12 AUG 2021

EC-3, 15 JUL 2021 to 12 AUG 2021

FERLL I-BYW [27.8] RADAR	OLLGA I-BYW [21.5] RADAR	GOOZY I-BYW [15.3] RADAR	FLYIN INT I-BYW [6.6] RADAR	WUGIX I-BYW [2.1] RADAR				
MLSEN I-BYW [24.7] RADAR	LEATH I-BYW [18.4] RADAR	KVENN I-BYW [12.1] RADAR	TRUFL INT I-BYW [3.5] RADAR					
9000 091° 8000 7000 6000 5000 4000 2300 1200 DPA GS 3.00° TCH 55 3.1 NM 3.1 NM 3.1 NM 3.1 NM 3.1 NM 5.6 NM 3.1 NM 0.6 0.8 0.4								
CATEGORY	A		B		C		D	
S-ILS 10R	930/24		250 (300-½)					
S-LOC 10R	1220/24	540 (600-½)	1220/55		540 (600-1)			
TRUFL FIX MINIMUMS (DUAL VOR RECEIVERS OR DME REQUIRED)								
S-LOC 10R	1120/24	440 (500-½)	1120/40		440 (500-¾)			

