

LOC/DME I-ZJ <b>110.75</b> Chan 44 (Y)	APP CRS <b>094°</b>	Rwy Idg 7500 TDZE 680 Apt Elev 680
--	------------------------	---

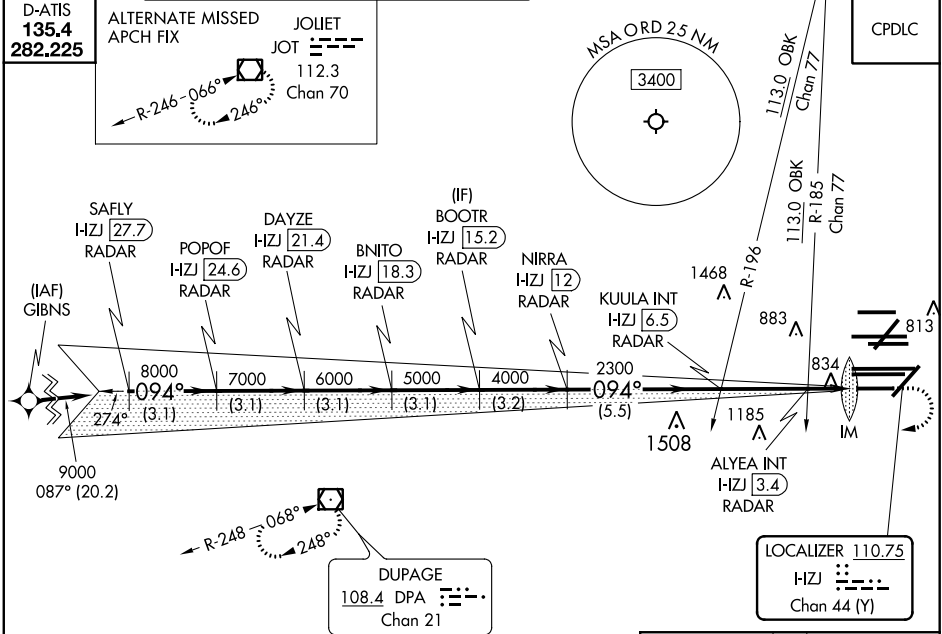
# ILS Z or LOC Z RWY 10R

CHICAGO O'HARE INTL (ORD)

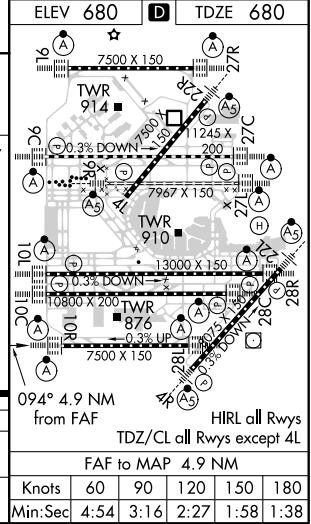
RNAV 1-GPS or RADAR required for procedure entry. DME or RADAR required.  
From GIBNS: RNAV-1 GPS required.  
Simultaneous approach authorized.  
For inop ALS, increase S-LOC 10R Cat C and D visibility to RVR 6000.

ALSF-2  
MISSED APPROACH: Climb to 1200 then climbing right turn to 4000 direct DPA VOR/DME and hold.

CHICAGO APP CON <b>119.0 292.125</b>	O'HARE TOWERS <b>128.15 348.0</b> (Rwy 9L/27R) <b>120.75 121.15 126.9 132.7 348.0</b> (CENTER)	GND CON (TWR NORTH) <b>124.125</b> (TWR SOUTH) <b>118.05</b> (ALL TWRs) <b>226.675</b>	(TWR CENTER) <b>121.75</b> (OBND) <b>121.9</b> (IBND)	CLNC DEL <b>121.6</b>
---	--	---	---	--------------------------



	SAFLY I-ZJ 27.7 RADAR	POPOF I-ZJ 24.6 RADAR	DAYZE I-ZJ 21.4 RADAR	BNITO I-ZJ 18.3 RADAR	NIIRRA I-ZJ 12 RADAR	KUULA INT I-ZJ 6.5 RADAR	ALYEA INT I-ZJ 3.4 RADAR	DUPAGE 108.4 DPA Chan 21
	3.1 NM	3.1 NM	3.1 NM	3.1 NM	3.2 NM	5.5 NM	3.1 NM	0.7 NM 0.1 NM
CATEGORY	A			B		C		D
S-ILS 10R	880/18			200 (200-½)				
S-LOC 10R	1100/24			420 (500-½)				



EC-3, 15 JUL 2021 to 12 AUG 2021

EC-3, 15 JUL 2021 to 12 AUG 2021