

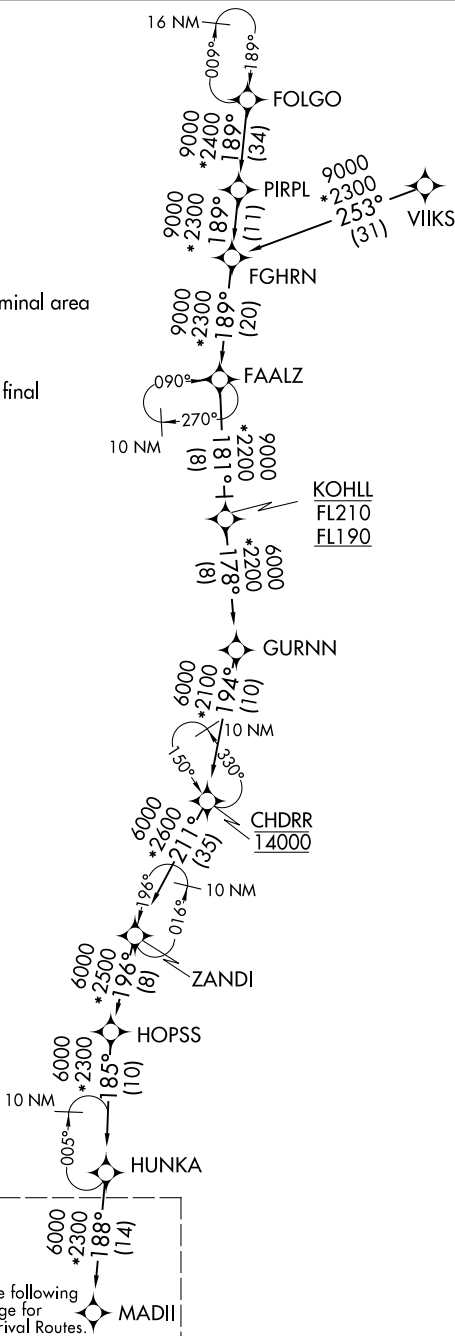
MADII SIX ARRIVAL (RNAV) Transition Routes

CHICAGO O'HARE INTL (ORD)  
CHICAGO, ILLINOIS

CHICAGO APP CON  
119.0 292.125  
D-ATIS  
135.4 282.225

- NOTE: RADAR required.
- NOTE: RNAV 1.
- NOTE: DME/DME/IRU or GPS required.
- NOTE: ZANDI Enroute transition: For Milwaukee terminal area departures only.
- NOTE: VIKS Enroute transition: ATC assigned only.
- NOTE: ORD Landing east: Expect RADAR vectors to final approach course after MADII.

- CHDRR TRANSITION (CHDRR.MADII6);
- FAALZ TRANSITION (FAALZ.MADII6);
- FGHRN TRANSITION (FGHRN.MADII6);
- FOLGO TRANSITION (FOLGO.MADII6);
- KOHLL TRANSITION (KOHLL.MADII6);
- PIRPL TRANSITION (PIRPL.MADII6);
- VIKS TRANSITION (VIKS.MADII6);
- ZANDI TRANSITION (ZANDI.MADII6);



(CONTINUED ON FOLLOWING PAGE)

NOTE: Chart not to scale.

See following page for Arrival Routes.