

WAAS CH 48904 W10A	APP CRS 093°	Rwy Idg 12246 TDZE 672 Apt Elev 680
--	------------------------	--

RNAV (GPS) RWY 10L

CHICAGO O'HARE INTL (ORD)

RADAR required for procedure entry. RNP APCH.

▼ For uncompensated Baro-VNAV systems, LNAV/VNAV NA below -19°C or above 54°C. Simultaneous approach authorized. LNAV procedure NA during simultaneous operations. Use of FD or AP providing RNAV track guidance required during simultaneous operations.

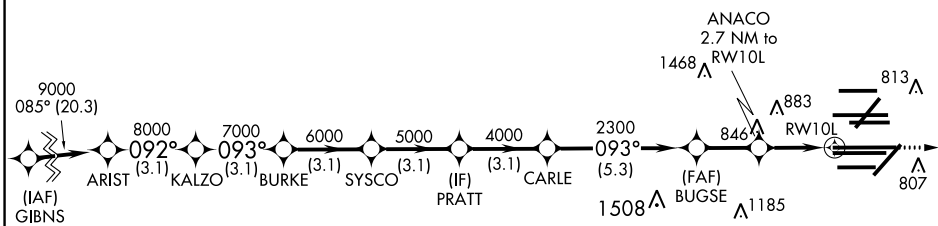
ALS-F-2



MISSED APPROACH: Climb to 4000 direct XURXU and on track 161° to CGT VORTAC and hold.

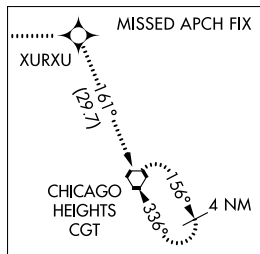
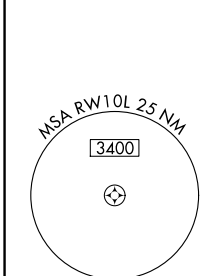
D-ATIS 135.4 282.225	CHICAGO APP CON 119.0 292.125	O'HARE TOWERS 128.15 348.0 (Rwy 9L/27R) 133.0 348.0 (110R/28L) 120.75 121.15 126.9 132.7 348.0 (CENTER)				GND CON (TWR NORTH) 124.125 (TWR SOUTH) 118.05 (ALL TWRS) 226.675	(TWR CENTER) 121.75 (OBND) (IBND) 121.9
--	---	--	--	--	--	---	--

CLNC DEL 121.6	CPDLC
--------------------------	-------

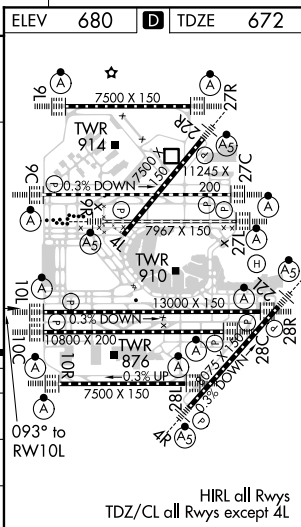


EC-3, 15 JUL 2021 to 12 AUG 2021

EC-3, 15 JUL 2021 to 12 AUG 2021



VGSi and RNAV glidepath not coincident (VGSi Angle 3.00/TCH 74).					4000	XURXU	tr 161°	CGT
ARIST	KALZO	BURKE	SYSCO	PRATT	CARLE	BUGSE	ANACO	
9000	8000	7000	6000	5000	4000	2300	2300	
GP 3.00° TCH 56					* 1.2 NM to RWY 10L			
					* 1.580			
CATEGORY	A	B	C	D				
LPV DA	872/18		200 (200-½)					
LNAV/VNAV DA	1062/35		390 (400-¾)					
LNAV MDA	1120/24	448 (500-½)		1120/45	448 (500-¾)			



HIRL all Rwys
TDZ/CL all Rwys except 4L