


WAAS CH 50228 W22B	APP CRS 225°	Rwy Idg TDZE Apt Elev	8075 654 680
--	------------------------	-----------------------------	---

RNAV (GPS) RWY 22L

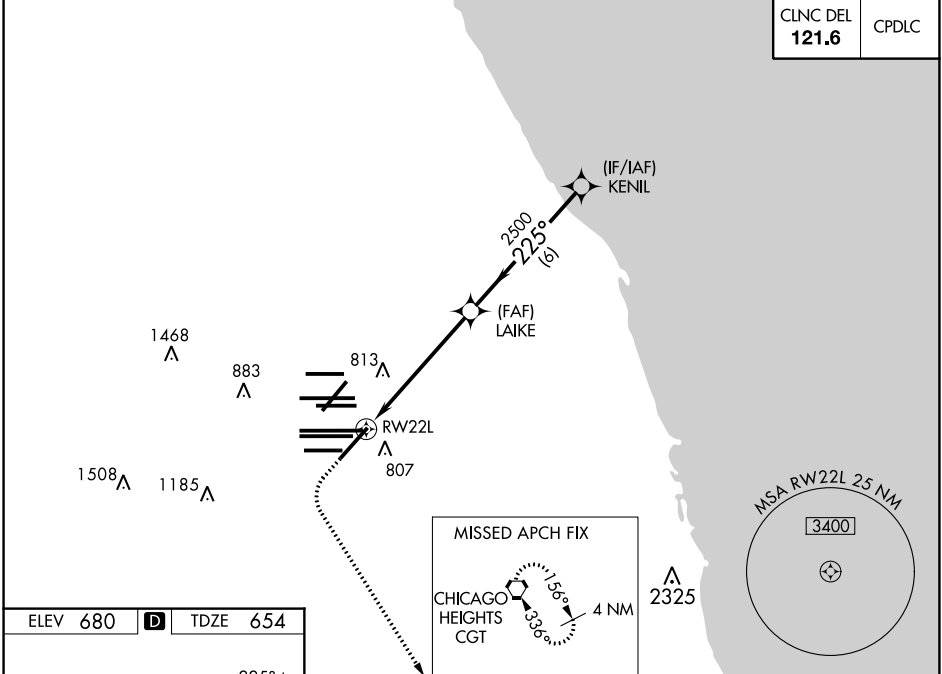
CHICAGO O'HARE INTL (ORD)

⚠ For uncompensated Baro-VNAV systems, LNAV/VNAV NA below -19°C (-2°F) or above 54°C (130°F). Simultaneous approach authorized with Rwy 22R. DME/DME RNP-0.3 NA. LNAV procedure NA during simultaneous operations. Use of FD or AP providing RNAV track guidance required during simultaneous operations.

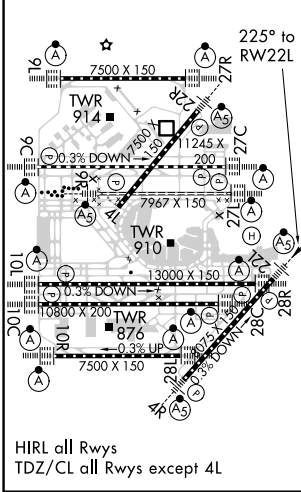
MALSR  MISSED APPROACH: Climb to 1100 then climbing left turn to 4000 direct CGT VORTAC and hold.

D-ATIS 135.4 282.225	CHICAGO APP CON 119.0 292.125	O'HARE TOWERS 128.15 348.0 (Rwy 9L/27R) 133.0 348.0 (10R/28L) 120.75 121.15 126.9 132.7 348.0 (CENTER)	GND CON (TWR CENTER) 124.125 (TWR NORTH) 121.75 (OBND) 118.05 (TWR SOUTH) 121.9 (IBND) 226.675 (ALL TWRS)
--	---	--	---

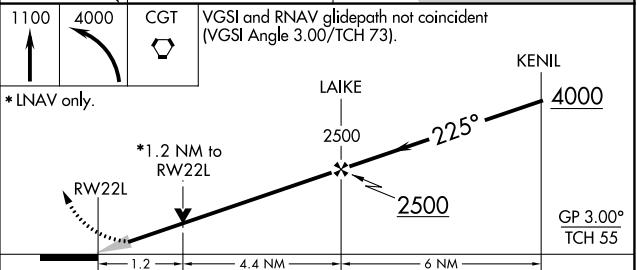
CINC DEL 121.6	CPDLC
--------------------------	-------



ELEV 680	D	TDZE 654
----------	----------	----------



HIRL all Rwy's
TDZ/CL all Rwy's except 4L



CATEGORY	A	B	C	D
LPV DA		854/18	200 (200-1/2)	
LNAV/VNAV DA		1066/45	412 (400-7/8)	
LNAV MDA	1120/24	466 (500-1/2)	1120/50	466 (500-1)
C CIRCLING	1220-1	540 (600-1)	1220-1 1/2 540 (600-1 1/2)	1460-2 1/2 780 (800-2 1/2)

EC-3, 15 JUL 2021 to 12 AUG 2021

EC-3, 15 JUL 2021 to 12 AUG 2021