

WAAS CH 42634 W28B	APP CRS 273°	Rwy Idg 10800 TDZE 651 Apt Elev 680
--	------------------------	--

RNAV (GPS) RWY 28C

CHICAGO O'HARE INTL (ORD)

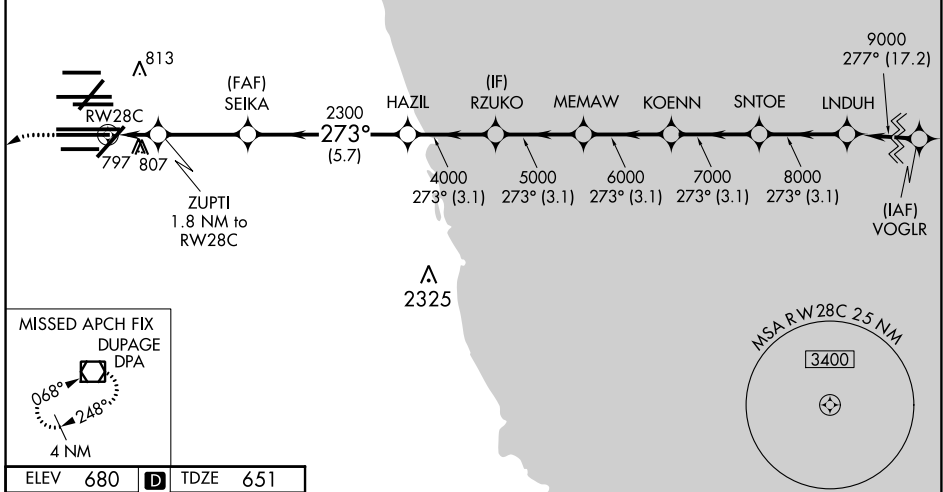
▼ DME/DME RNP-0.3 NA. Simultaneous approach authorized. For uncompensated Baro-VNAV systems, LNAV/VNAV NA below -19°C (-2°F) or above 54°C (130°F). LNAV procedure NA during simultaneous operations. Use of FD or AP providing RNAV track guidance required during simultaneous operations. For inop ALSF, increase LNAV Cat C and D visibility to RVR 6000.

ALSF-2 	MISSED APPROACH: Climb to 1100 then climbing left turn to 4000 direct DPA VOR/DME and hold.
------------	--

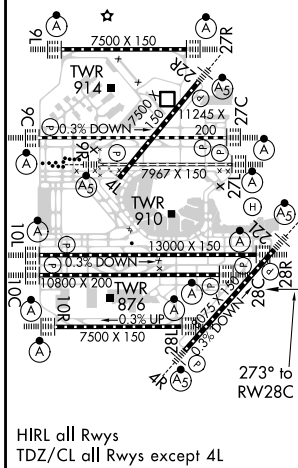
D-ATIS 135.4 282.225	CHICAGO APP CON 119.0 292.125	O'HARE TOWERS 128.15 348.0 (Rwy 9L/27R) 133.0 348.0 (10R/28L) 120.75 121.15 126.9 132.7 348.0 (CENTER)	GND CON (TWR NORTH) 124.125 (TWR SOUTH) 118.05 (ALL TWRs) 226.675	(TWR CENTER) 121.75 (OBND) (IBND) 121.9
--	---	--	--	--

CLNC DEL 121.6	CPDLC
--------------------------	-------

RADAR REQUIRED



ELEV 680	D	TDZE 651
-----------------	----------	-----------------



1100	4000	DPA	VGSi and RNAV glidepath not coincident (VGSi Angle 3.00°/TCH 80).			
*LNAV only.						
ZUPTI 1.8 NM to RWY 28C	SEIKA 2300	HAZIL	RZUKO 5000	MEMAW 6000	KOENN 7000	SNTOE 8000
RWY 28C	*1260	2300	4000	5000	6000	7000
	-1 NM	0.8	3.2 NM	-5.7 NM	3.1 NM	3.1 NM
CATEGORY	A		B		C	
LPV DA	851/18		200 (200-½)			
LNAV/VNAV DA	1094/50		443 (500-1)			
LNAV MDA	1060/24		409 (400-½)		1060/40 409 (400-¾)	

EC-3, 15 JUL 2021 to 12 AUG 2021

EC-3, 15 JUL 2021 to 12 AUG 2021