

WAAS CH 58143 W09D	APP CRS 093°	Rwy Idg TDZE Apt Elev	11245 673 680
--	------------------------	-----------------------------	--

RNAV (GPS) RWY 9C

CHICAGO O'HARE INTL (O.R.D)

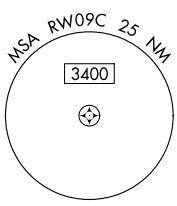
RNP APCH.

▼ Simultaneous approach authorized. LNAV procedure NA during simultaneous operations. Use of FD or AP required during simultaneous operations. For uncompensated Baro-VNAV systems, LNAV/VNAV NA below -19°C or above 54°C. For inop ALS, increase LNAV/VNAV all cats visibility to RVR 4500 and LNAV Cat C/D to 1% SM.

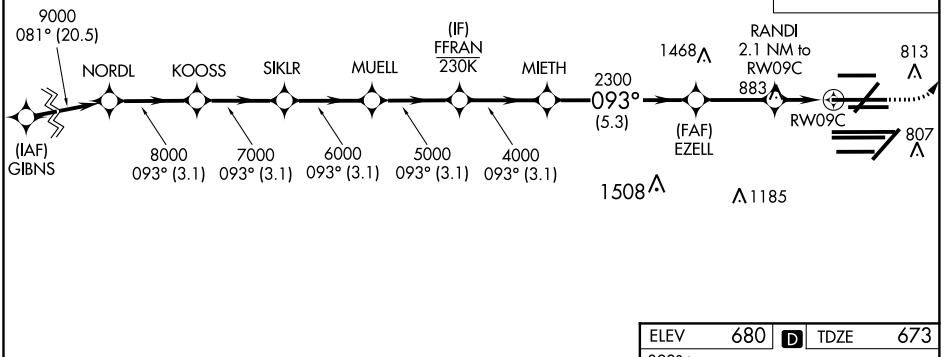
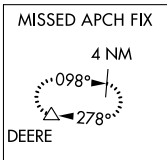
ALS-F-2

MISSED APPROACH: Climb to 1200 then climbing left turn to 4000 direct DEERE and hold.

D-ATIS 135.4 282.225	CHICAGO APP CON 119.0 292.125	O'HARE TOWERS 128.15 348.0 (Rwy 9L/27R) 133.0 348.0 (10R/28L) 120.75 121.15 126.9 132.7 348.0 (CENTER)	GND CON (TWR NORTH) (TWR SOUTH) (ALL TWRs) 124.125 118.05 226.675	(TWR CENTER) (OBND) (IBND) 121.75 121.9
--	--	--	--	---



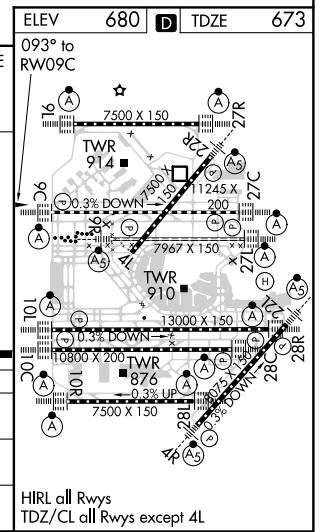
CLNC DEL 121.6	CPDLC
--------------------------	-------



VGSI and RNAV glidepath not coincident (VGSI Angle 3.00/TCH 72).

	1200	4000	DEERE
	↑	↘	△
	*LNAV only.		

	9000	8000	7000	6000	5000	4000	2300	1400
	GP 3.00°							
	-3.1 NM	3.1 NM	3.1 NM	3.1 NM	3.1 NM	5.3 NM	2.8 NM	-0.9 - 1.2
CATEGORY	A	B	C	D				
LPV DA		873/18	200 (200-½)					
LNAV/VNAV DA		976/24	303 (300-½)					
LNAV MDA	1140/24	467 (500-½)	1140/50	467 (500-1)				



EC-3, 15 JUL 2021 to 12 AUG 2021

EC-3, 15 JUL 2021 to 12 AUG 2021