


|  |                        |   |
|--|------------------------|---|
| WAAS<br>CH <b>78204</b><br><b>W09A</b> | APP CRS<br><b>093°</b> | Rwy Idg <b>7709</b><br>TDZE <b>660</b><br>Apt Elev <b>680</b> |
|--|------------------------|---|

# RNAV (GPS) RWY 9R

CHICAGO O'HARE INTL (ORD)

RADAR required for procedure entry. RNP APCH.

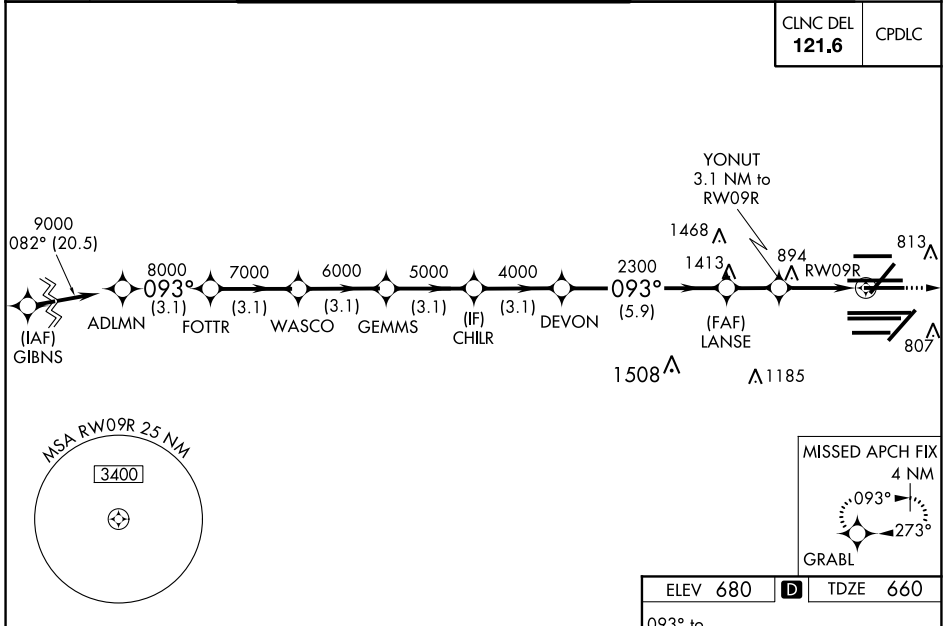
**⚠** Simultaneous approach authorized. For uncompensated Baro-VNAV systems, LNAV/VNAV NA below -19°C or above 54°C. LNAV procedure NA during simultaneous operations. Use of FD or AP providing RNAV track guidance required during simultaneous operations. For inop ALS, increase LNAV/VNAV all Cats visibility to RVR 6000, and LNAV Cat C/D visibility to 1 3/8 SM.

MALS R 


MISSED APPROACH:  
Climb to 4000 direct GRABL and hold.

|  |   |  |  |  |  |  |   |
|--|---|--|--|--|--|--|---|
| D-ATIS<br><b>135.4</b><br><b>282.225</b> | CHICAGO APP CON<br><b>119.0 292.125</b> | O'HARE TOWERS<br><b>128.15 348.0</b> (Rwy 9L/27R) <b>133.0 348.0</b> (10R/28L) <b>120.75 121.15 126.9 132.7 348.0</b> (CENTER) |  |  |  | GND CON (TWR NORTH)<br><b>124.125</b><br>(TWR SOUTH)<br><b>118.05</b><br>(ALL TWS)<br><b>226.675</b> | (TWR CENTER)<br><b>121.75</b> (OBND)<br><b>121.9</b> (IBND) |
|--|---|--|--|--|--|--|---|

|                          |       |
|--------------------------|-------|
| CLNC DEL<br><b>121.6</b> | CPDLC |
|--------------------------|-------|

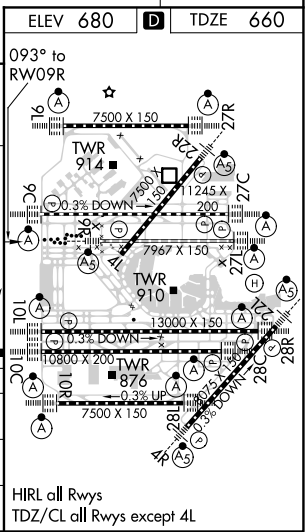


VGSI and RNAV glidepath not coincident (VGSI Angle 3.00/TCH 74).

4000 GRABL 

\* NNAV only.

|              |         |        |               |        |         |        |             |       |
|--------------|---------|--------|---------------|--------|---------|--------|-------------|-------|
| ADLMN        | FOTTR   | WASCO  | GEMMS         | CHILR  | DEVON   | LANSE  | YONUT       | RW09R |
| 9000         | 8000    | 7000   | 6000          | 5000   | 4000    | 2300   | 1700        | 1700  |
| GP 3.00°     |         |        |               |        |         |        |             |       |
| TCH 57       |         |        |               |        |         |        |             |       |
|              | 3.1 NM  | 3.1 NM | 3.1 NM        | 3.1 NM | 3.1 NM  | 5.9 NM | 1.9 NM      | 1.8   |
| CATEGORY     | A       |        | B             |        | C       |        | D           |       |
| LPV DA       | 860/18  |        | 200 (200-1/2) |        |         |        |             |       |
| LNAV/VNAV DA | 1070/40 |        | 410 (400-3/4) |        |         |        |             |       |
| LNAV MDA     | 1160/24 |        | 500 (500-1/2) |        | 1160/50 |        | 500 (500-1) |       |



EC-3, 15 JUL 2021 to 12 AUG 2021

EC-3, 15 JUL 2021 to 12 AUG 2021