

CHICAGO, ILLINOIS

AL-166 (FAA)

# RNAV (GPS) PRM RWY 28C

21112

WAAS CH <b>53639</b> <b>W28B</b>	APP CRS <b>273°</b>	Rwy Idg <b>10800</b> TDZE <b>651</b> Apt Elev <b>680</b>
--	------------------------	--

(CLOSE PARALLEL)  
CHICAGO O'HARE INTL (ORD)

▼ For uncompensated Baro-VNAV systems, LNAV/VNAV NA below -19°C (-2°F) or above 54°C (130°F). DME/DME RNP-0.3 NA. Use of FD or AP providing RNAV track guidance required during simultaneous operations. Simultaneous approach authorized. Dual VHF comm required. See additional requirements on AAUP.

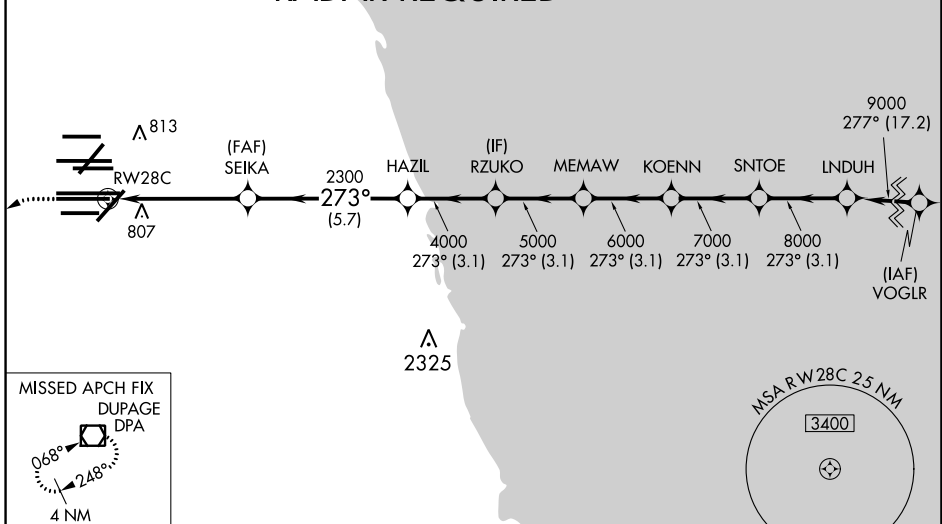


MISSED APPROACH:  
Climb to 1100 then climbing left turn to 4000 direct DPA VOR/DME and hold.

D-ATIS <b>135.4</b> <b>282.225</b>	CHICAGO APP CON <b>119.0 292.125</b>	O'HARE TOWERS <b>128.15 348.0</b> (Rwy 9L/27R) <b>133.0 348.0</b> (10R/28L) <b>120.75 121.15 126.9 132.7 348.0</b> (CENTER) <b>PRM 119.625</b>	GND CON (TWR NORTH) <b>124.125</b> (TWR SOUTH) <b>118.05</b> (ALL TWRS) <b>226.675</b>	(TWR CENTER) <b>121.75</b> (OBND) (IBND) <b>121.9</b>
--	---	---	--	--

CLNC DEL <b>121.6</b>	CPDLC
--------------------------	-------

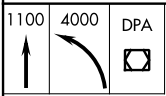
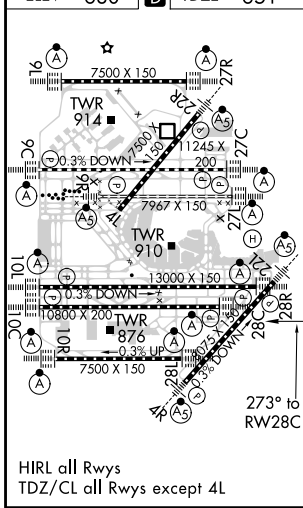
## RADAR REQUIRED



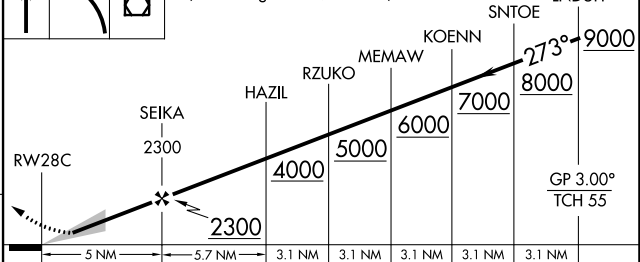
EC-3, 15 JUL 2021 to 12 AUG 2021

EC-3, 15 JUL 2021 to 12 AUG 2021

ELEV <b>680</b>	<b>D</b>	TDZE <b>651</b>
-----------------	----------	-----------------



VGSI and RNAV glidepath not coincident (VGSI Angle 3.00/TCH 80).



CATEGORY	A	B	C	D
LPV DA		851/18	200 (200-½)	
LNAV/VNAV DA		1094/50	443 (500-1)	

CHICAGO, ILLINOIS  
Orig-A 17AUG17

41°59'N-87°54'W

CHICAGO O'HARE INTL (ORD)

# RNAV (GPS) PRM RWY 28C (CLOSE PARALLEL)